



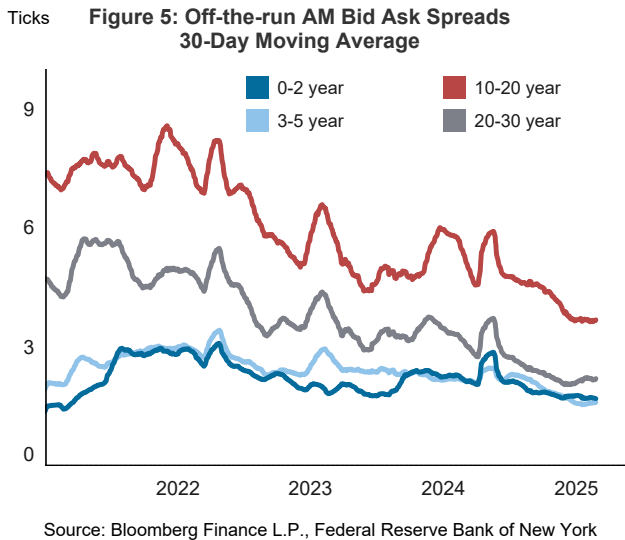
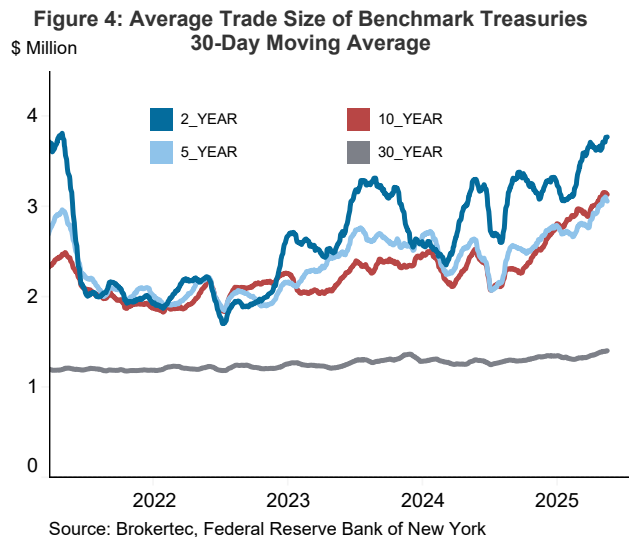
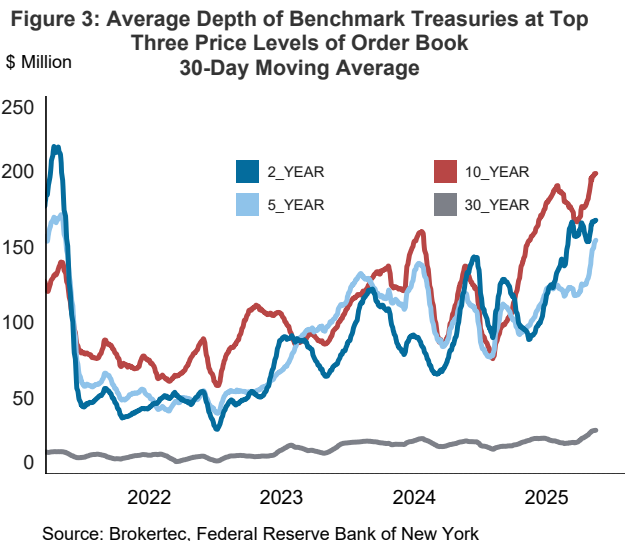
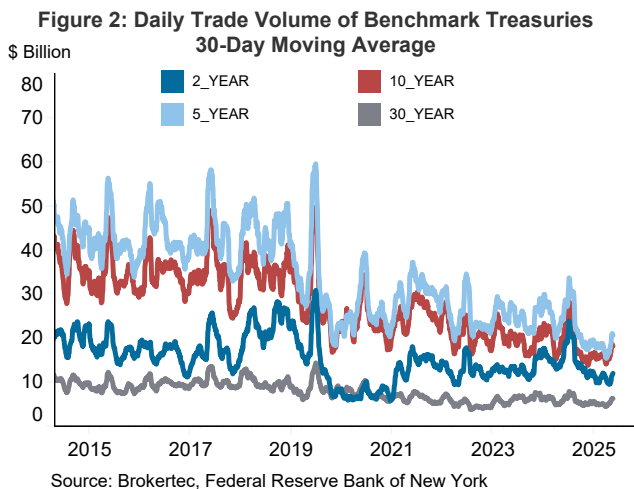
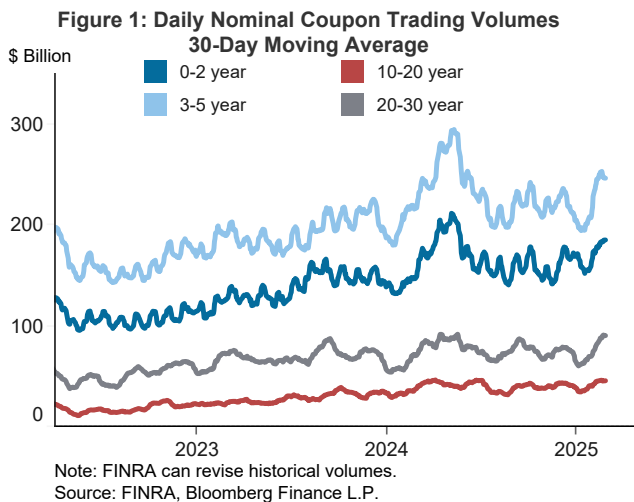
## Treasury Market Practices Group Chart Pack

### Price Table - February 24, 2026

Asset	Most Recent	1-Week Change	1-Month Change	Since last TMPG	Year-to-Date
<i>Treasury Rates</i>					
2-Year Treasury	3.44%	+3	-16	-5	-3
10-Year Treasury	4.03%	-2	-19	-11	-14
30-Year Treasury	4.70%	+1	-12	-11	-14
2-Year 10-Year Spread	59 bps	-5	-4	-7	-10
<i>30-Year Mortgage Rates</i>					
Freddie Mac PMMS Mortgage Rate	6.01%	-8	-8	-21	-17
FNCL Current Coupon Yield	4.83%	-2	-20	-28	-21
<i>Short Term Interest Rates</i>					
EFFR	3.64%	+0	+0	+0	+0
SOFR	3.66%	+0	+1	-3	-21
TGCR	3.64%	+0	+0	+0	-18
CME 3-Month Term SOFR OIS	3 bps	+0	-1	-4	-2
<i>Equities and Commodities</i>					
S&P 500 Futures	6852	0.0%	-1.4%	-0.1%	-0.6%
KBW Bank Index	161.73	-2.8%	-1.6%	-1.2%	-1.5%
NASDAQ 100 Futures	24763	-0.2%	-3.8%	-1.5%	-2.7%
Brent Crude	\$71.49	5.5%	8.5%	21.3%	17.5%
<i>Credit Spreads to Treasuries</i>					
5-Year Investment Grade	79 bps	+0	+7	+0	+1
5-Year High Yield	280 bps	+0	+24	-1	+14
<i>Volatility Measures</i>					
Currency Vol.- CVIX Index	7.49 pps	+0	+1	+1	+1
Rate Vol.- MOVE Index	68.03 pps	-2	+12	+1	+4
<i>Policy Expectations</i>					
Feb 2026 Fed Funds	3.64%	+0	+1	+6	+5
Feb 2027 Fed Funds	3.02%	+4	-19	-3	-3

Note: Pricing data is as of C.O.B. the previous day, except the short-term interest rates that show last Friday's rates and the Freddie Mac PMMS Mortgage Rate that updates weekly.  
Source: Bloomberg Finance L.P.

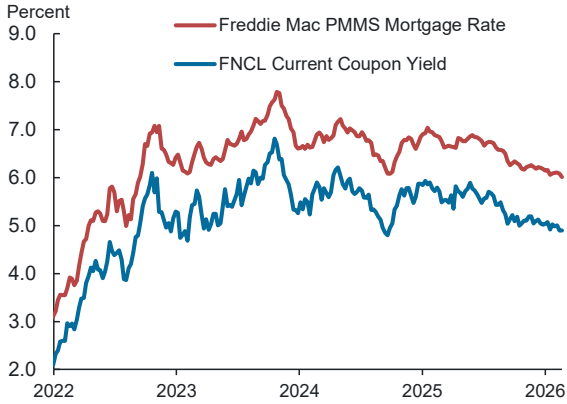
### Treasury Market Liquidity Metrics





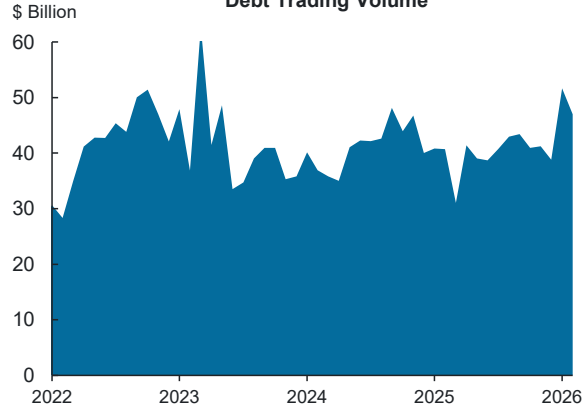
## MBS and Agency Debt Market Liquidity and Fails Data Metrics

**Figure 1: 30-Year Mortgage Rates**



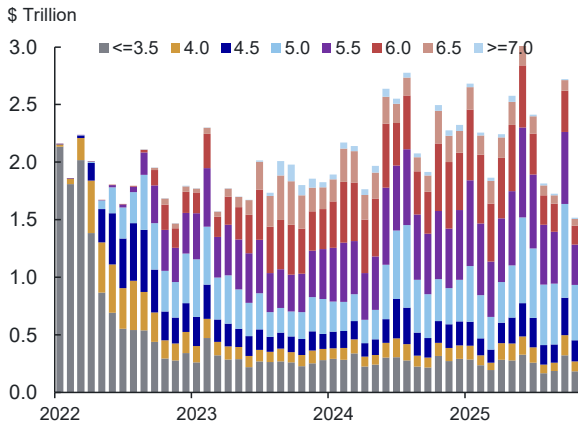
Source: Bloomberg Finance L.P.

**Figure 2: Monthly Average of Primary Dealer Agency Debt Trading Volume**



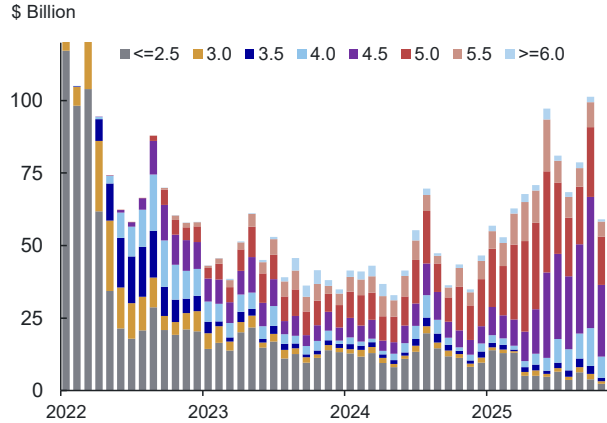
Source: FR2004

**Figure 3: Monthly MBS 30-Year Outright TBA Trading Volume by Coupon**



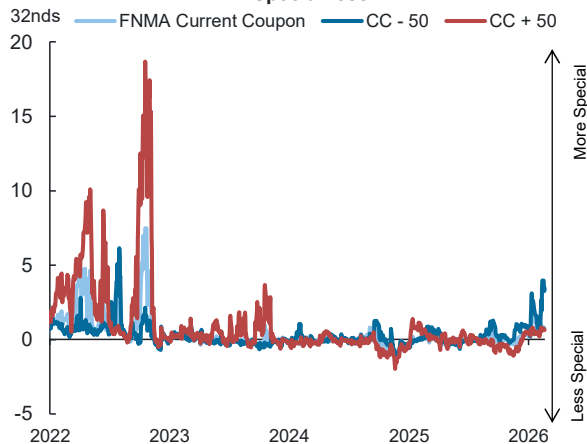
Note: Includes dealer-to-dealer outright sales and dealer-to-customer outright purchases and sales  
Source: TRACE

**Figure 4: Monthly MBS 15-Year Outright TBA Trading Volume by Coupon**



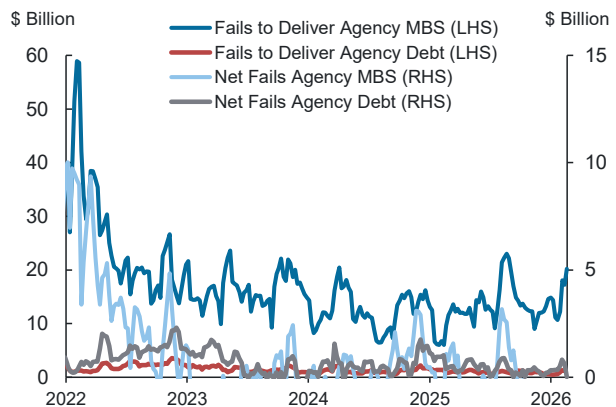
Note: Includes dealer-to-dealer outright sales and dealer-to-customer outright purchases and sales  
Source: TRACE

**Figure 5: FNMA 30-Year Current Coupon Roll Specialness**



Source: J.P. Morgan Dataquery

**Figure 6: Weekly Agency MBS and Agency Debt Fails 4-Week Moving Average**



Source: FR2004

### Treasuries and Agency MBS Ownership Structure

