
QUARTERLY REPORT ON HOUSEHOLD DEBT AND CREDIT



Household Debt and Credit Developments in 2013 Q3¹

Aggregate consumer debt increased in the third quarter by \$127 billion, the largest increase seen since the first quarter of 2008. As of September 30, 2013, total consumer indebtedness was \$11.28 trillion, up by 1.1% from its level in the second quarter of 2013. Overall consumer debt remains 11% below its peak of \$12.68 trillion in 2008Q3.

Mortgages, the largest component of household debt, increased by 0.7% in the third quarter of 2013. Mortgage balances shown on consumer credit reports stand at \$7.90 trillion, up by \$56 billion from their level in the second quarter. Balances on home equity lines of credit (HELOC) dropped by \$5 billion (0.9%) and now stand at \$535 billion. Household non-housing debt balances increased by 2.7%, with gains of \$31 billion in auto loan balances, \$33 billion in student loan balances, and \$4 billion in credit card balances.

Delinquency rates improved for most loan types in 2013Q3. As of September 30, 7.4% of outstanding debt was in some stage of delinquency, compared with 7.6% in 2013Q2. About \$831 billion of debt is delinquent, with \$600 billion seriously delinquent (at least 90 days late or “severely derogatory”).

Delinquency transition rates for current mortgage accounts are near pre-crisis levels, with 1.6% of current mortgage balances transitioning into delinquency. The rate of transition from early (30-60 days) into serious (90 days or more) delinquency increased slightly, to 22.7%, while the cure rate – the share of balances that transitioned from 30-60 days delinquent to current – also worsened somewhat, dropping to 25.7%.

About 355,000 consumers had a bankruptcy notation added to their credit reports in 2013Q3, roughly flat compared to the same quarter last year.

Housing Debt

- Originations, which we measure as appearances of new mortgage balances on consumer credit reports, dropped slightly to \$549 billion.
- About 168,000 individuals had a new foreclosure notation added to their credit reports between July 1 and September 30.
- Foreclosures have been on a declining trend since the second quarter of 2009 and are now at the lowest levels seen since the end of 2005.
- Mortgage delinquency rates have seen consistent improvements; 4.3% of mortgage balances were 90+ days delinquent during 2013Q3, compared to 4.9% in the previous quarter.
- Delinquency rates on Home Equity Lines of Credit increased to 3.5%, up from 3.0% in 2013Q2.

Student Loans and Credit Cards

- Outstanding student loan balances reported on credit reports increased to \$1.027 trillion as of September 30, 2013, a \$33 billion increase from the second quarter.
- The 90+ day delinquency rate increased, and is now at 11.8%
- Balances on credit cards accounts increased by \$4 billion.
- The 90+ day delinquency rate on credit card balances fell to 9.4%.

Auto Loans and Inquiries

- Auto loan originations increased in the third quarter of 2013 to \$97.4 billion, the highest level since 2007Q3.
- The percentage of auto loan debt that is 90 or more days delinquent continued its downward trend, and now stands at 3.4%.
- The number of credit inquiries within six months – an indicator of consumer credit demand – increased. There were 168 million inquiries in 2013Q3, compared to 159 million inquiries in 2013Q2.

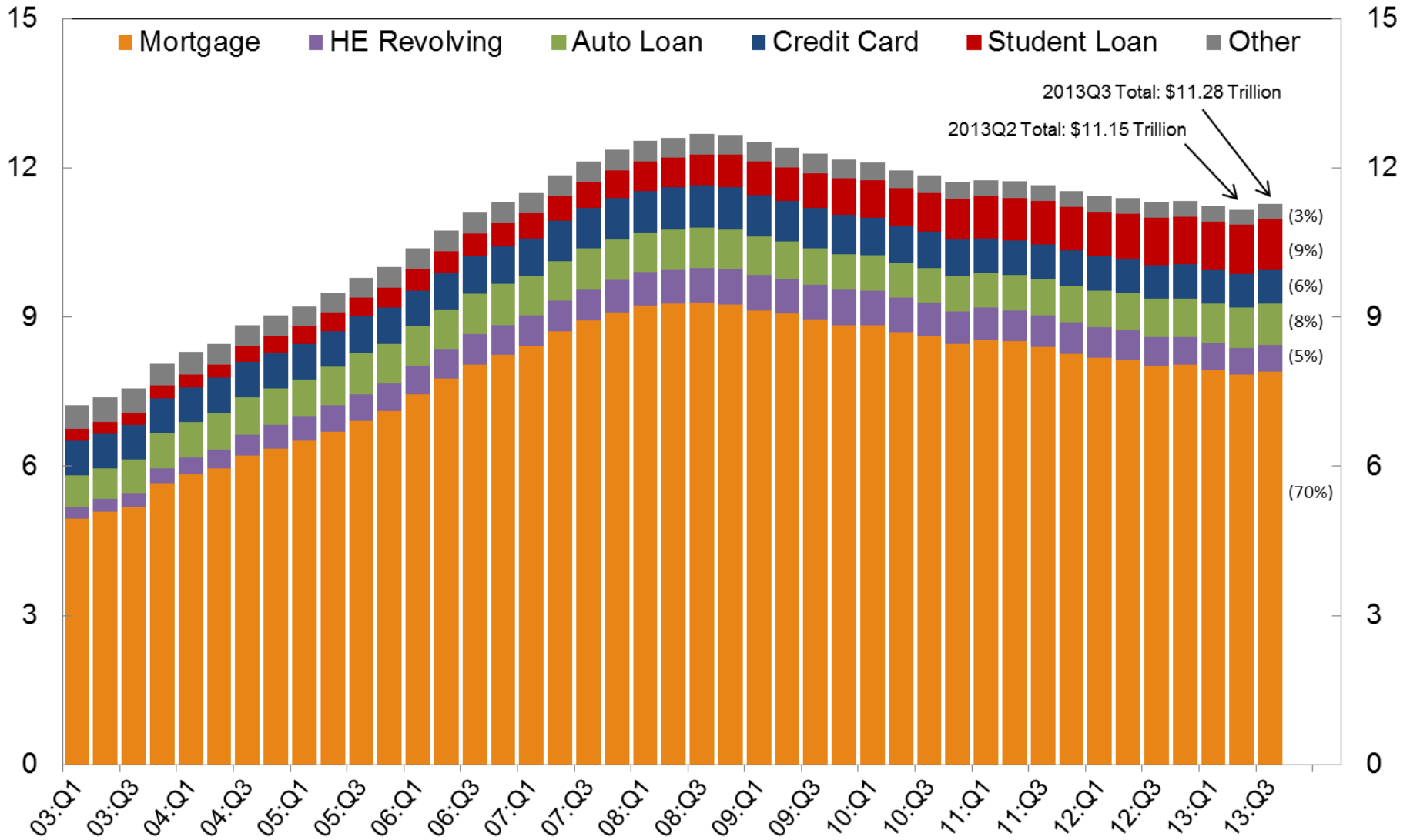
¹ This report is based on data from the FRBNY Consumer Credit Panel. For details on the data set and the measures reported here, see the data dictionary available at the end of this report. Please contact Joelle Scally with questions.

NATIONAL CHARTS

Total Debt Balance and its Composition

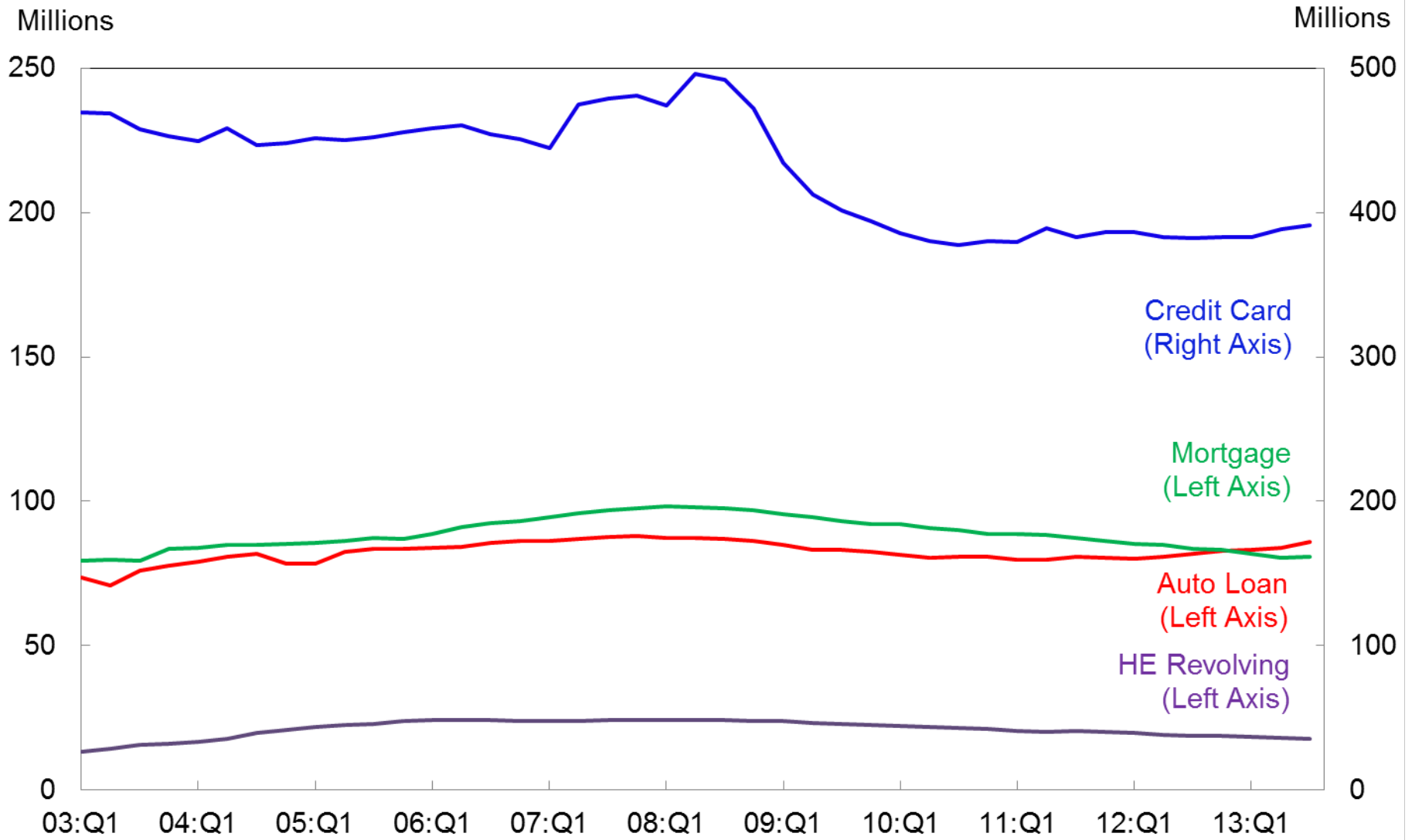
Trillions of Dollars

Trillions of Dollars



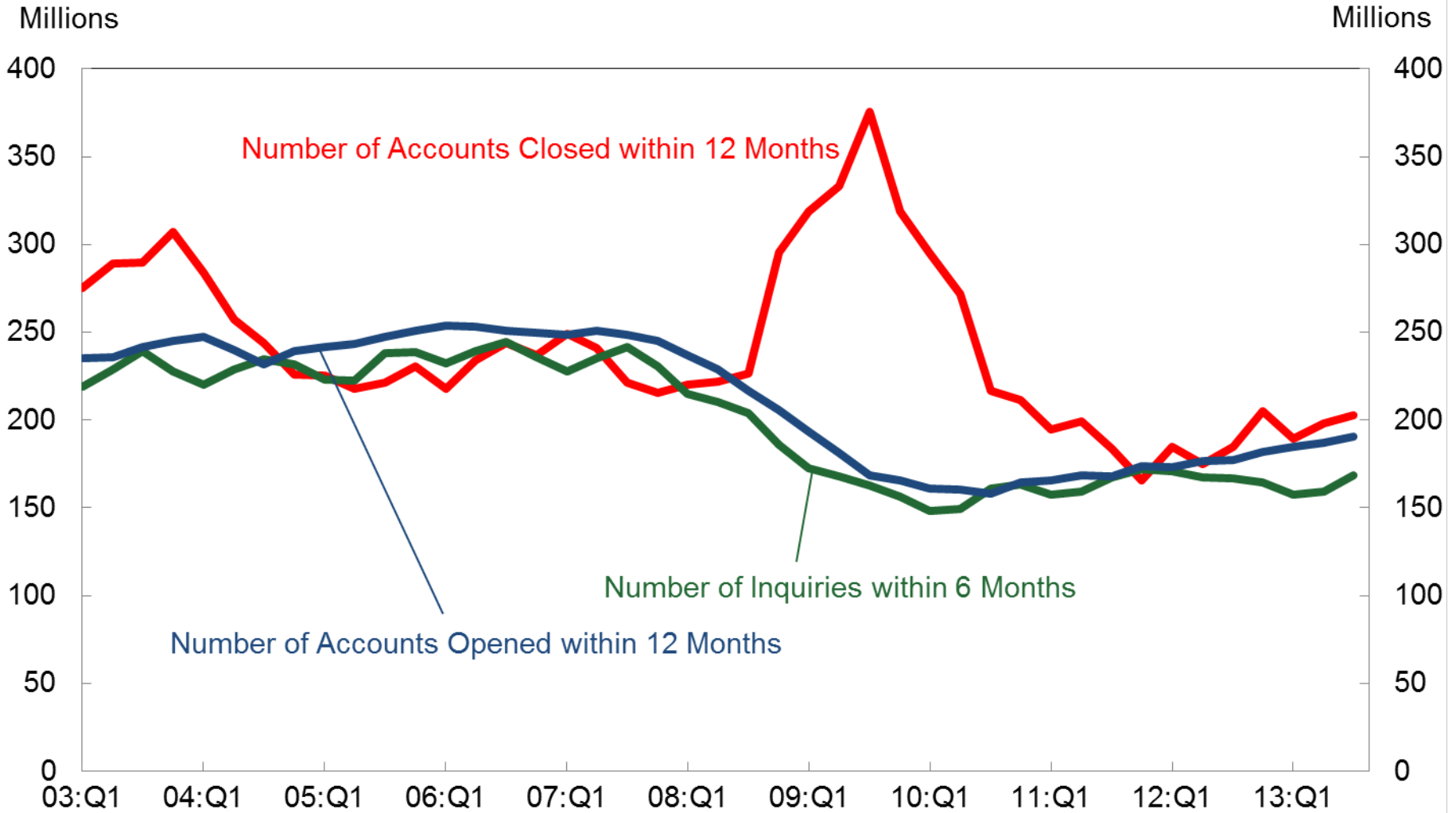
Source: FRBNY Consumer Credit Panel/Equifax

Number of Accounts by Loan Type



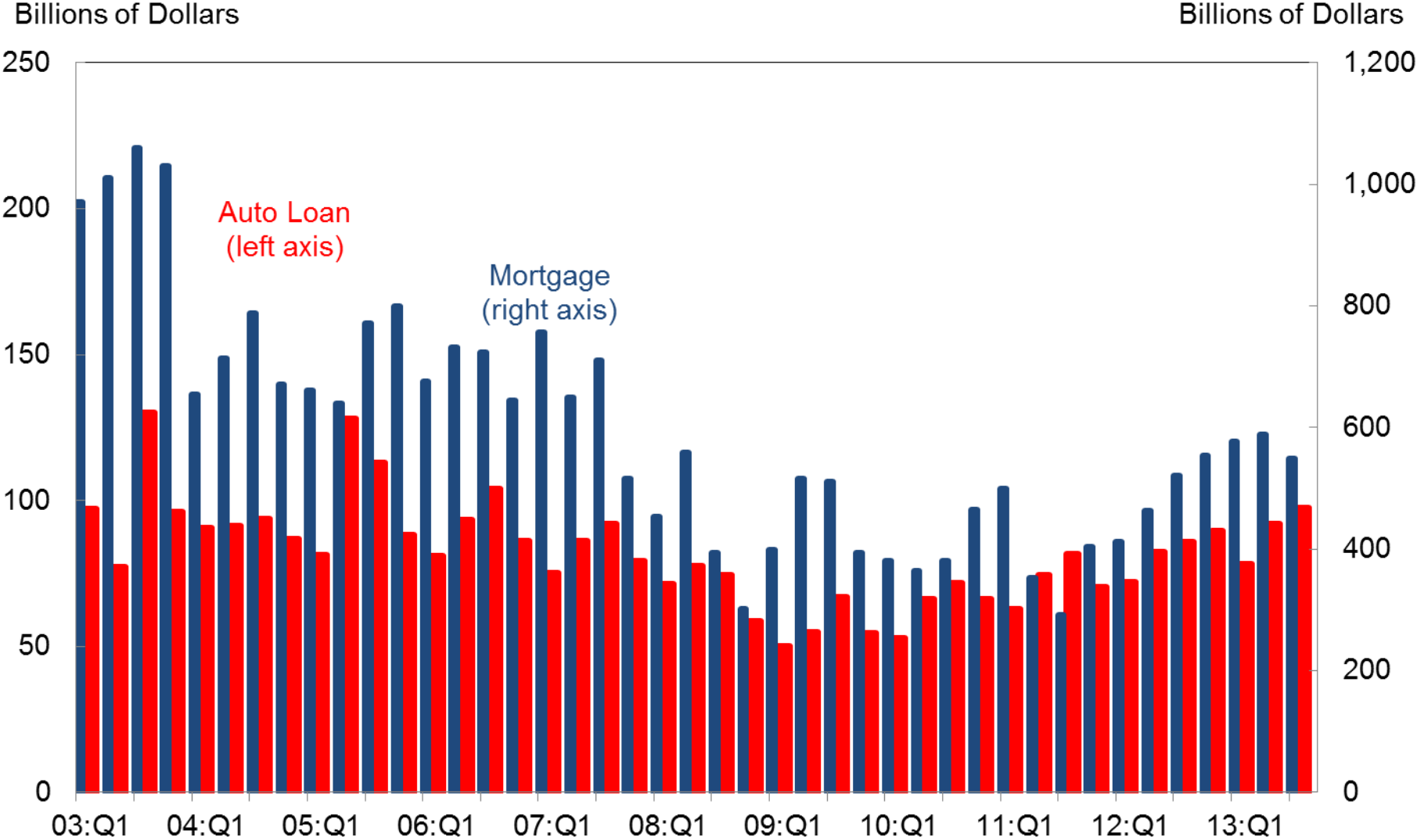
Source: FRBNY Consumer Credit Panel/Equifax

Total Number of New and Closed Accounts and Inquiries



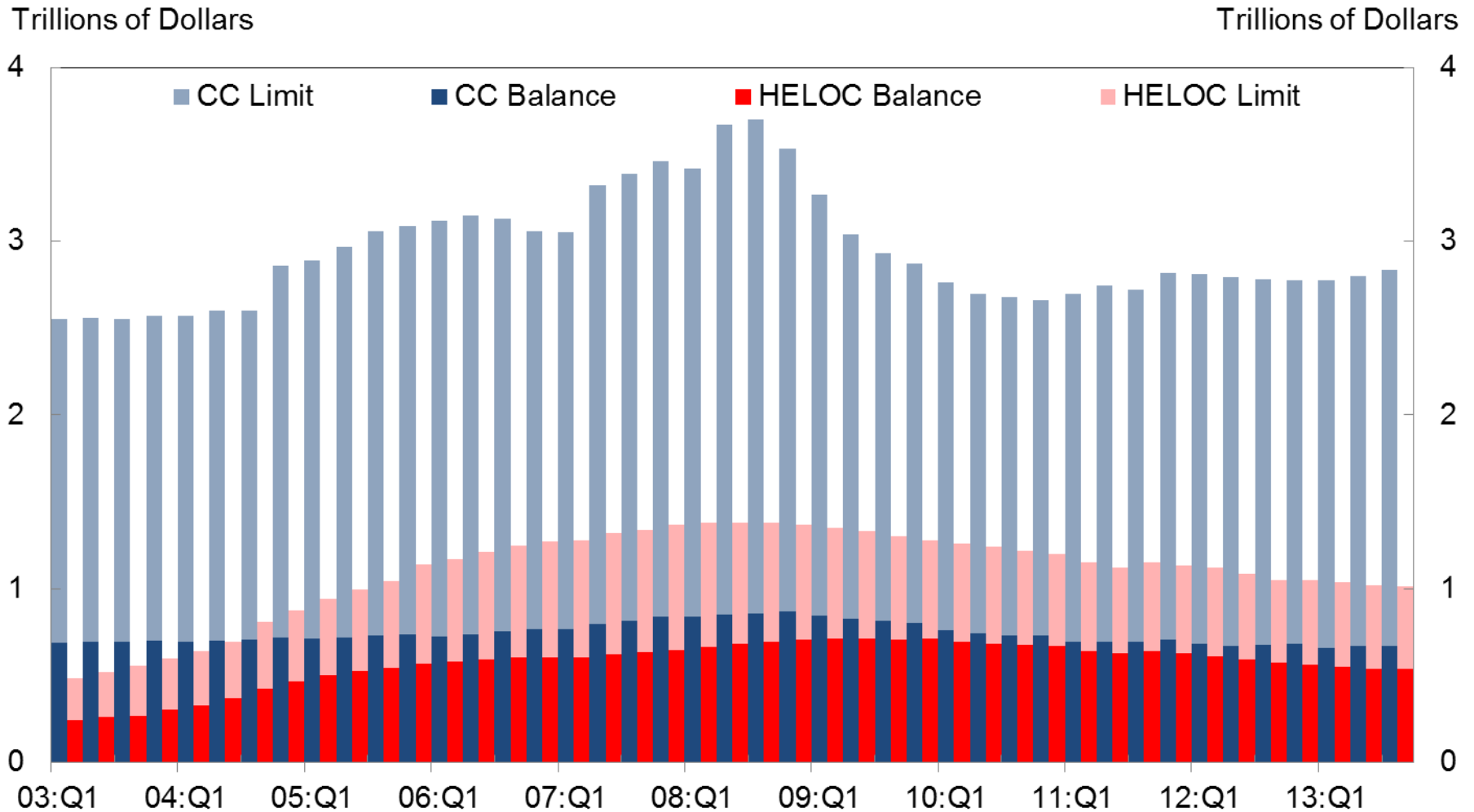
Source: FRBNY Consumer Credit Panel/Equifax

Newly Originated Installment Loan Balances



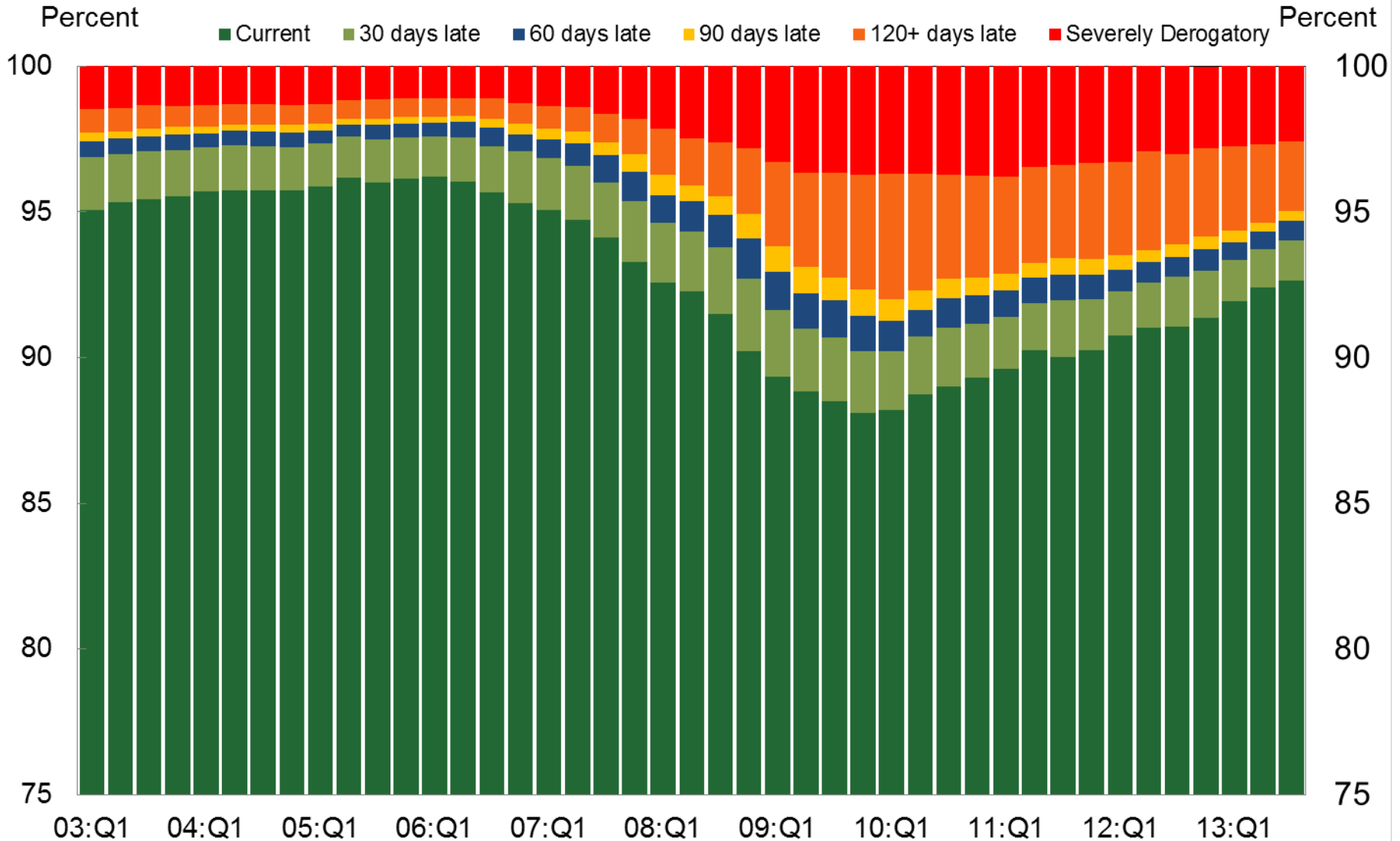
Source: FRBNY Consumer Credit Panel/Equifax

Credit Limit and Balance for Credit Cards and HE Revolving



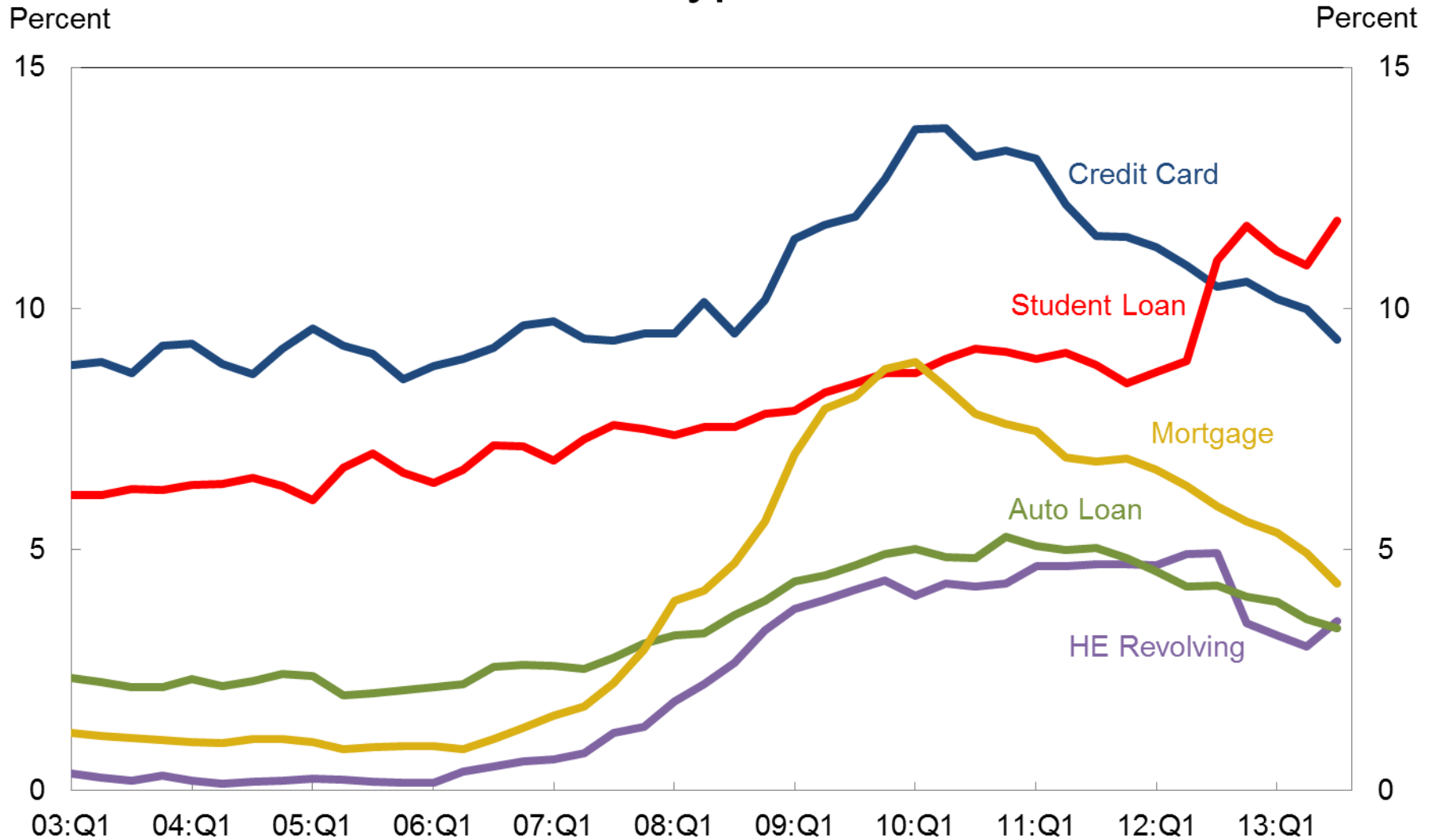
Source: FRBNY Consumer Credit Panel/Equifax

Total Balance by Delinquency Status



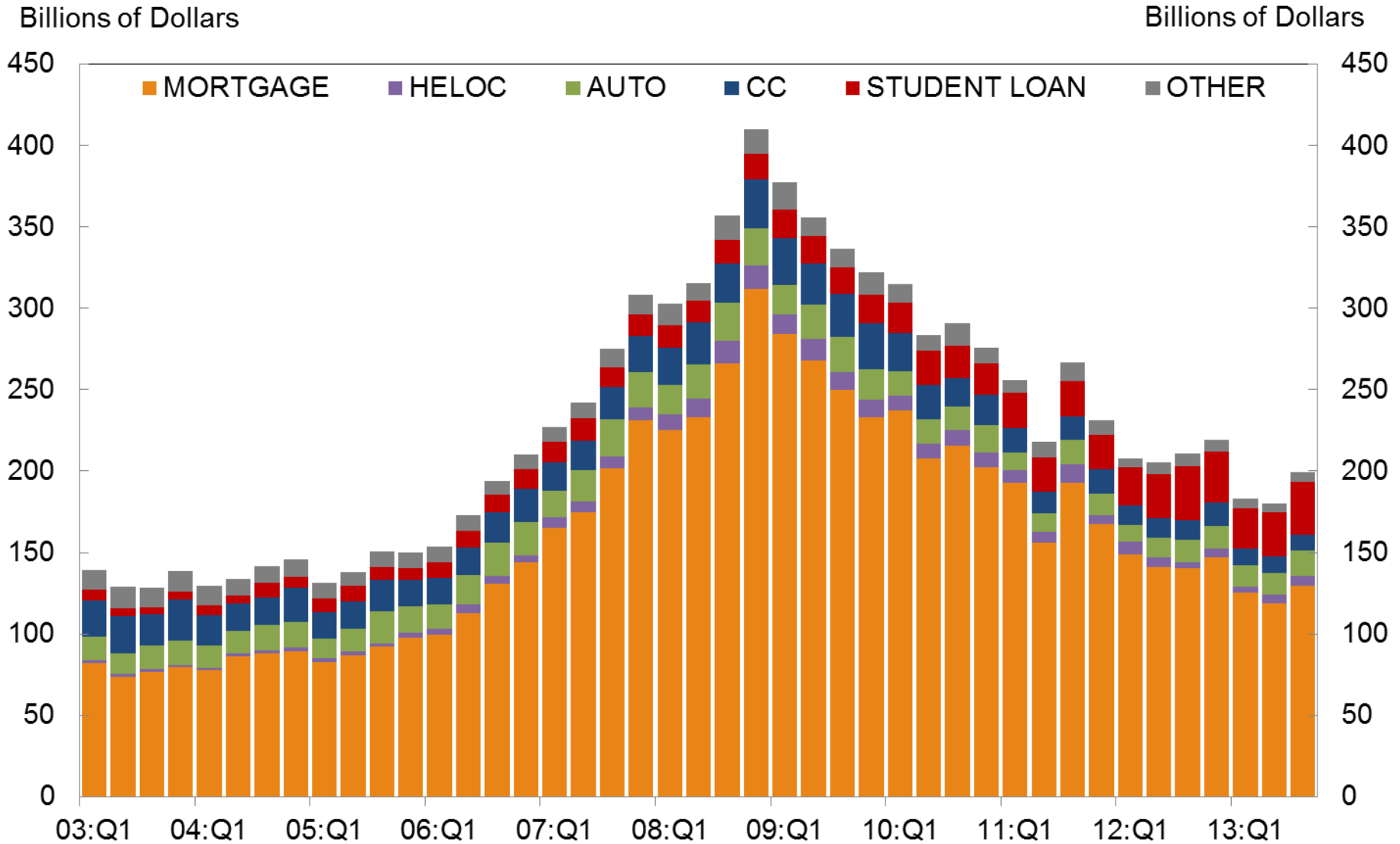
Source: FRBNY Consumer Credit Panel/Equifax

Percent of Balance 90+ Days Delinquent by Loan Type



Source: FRBNY Consumer Credit Panel/Equifax

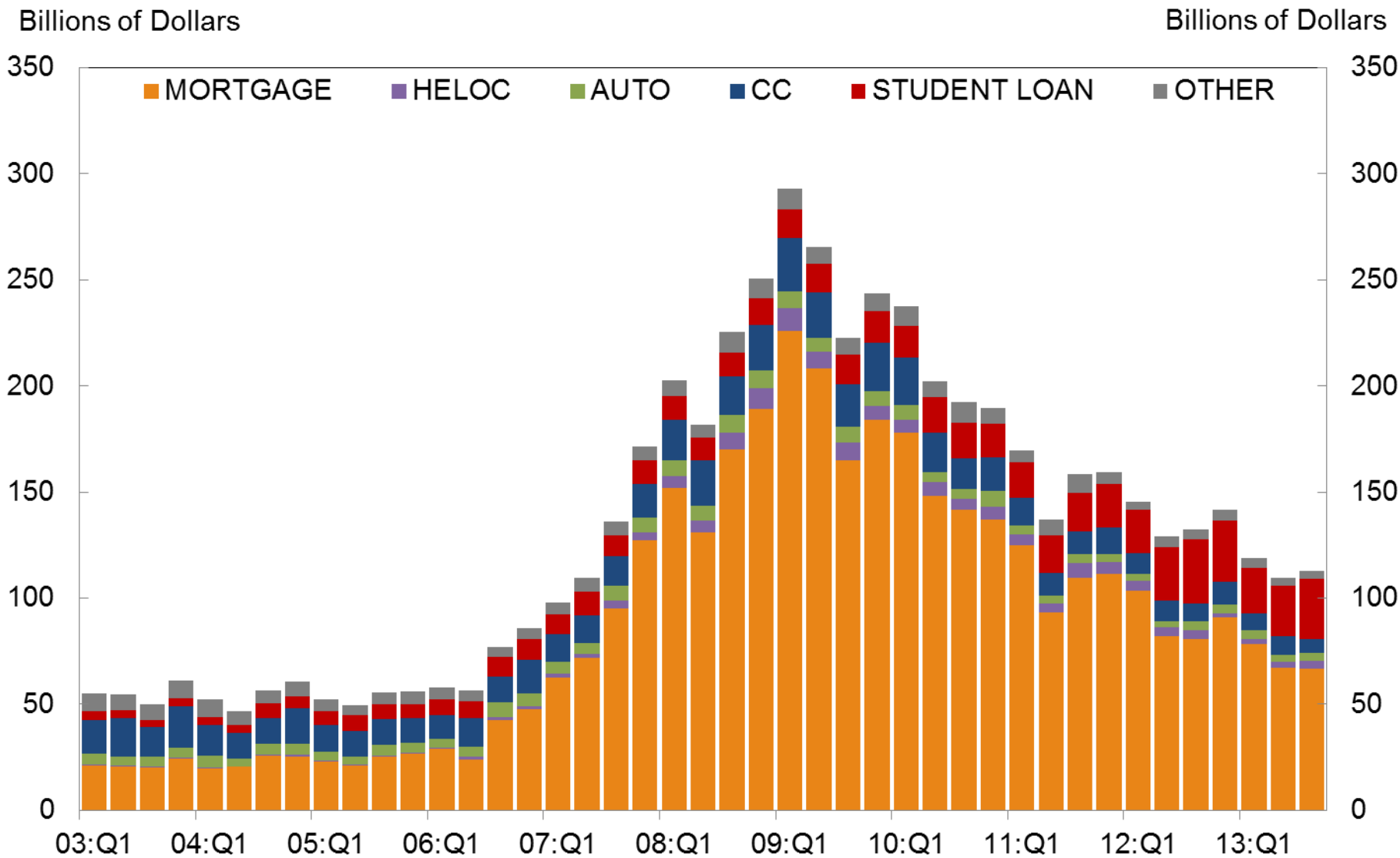
New Delinquent Balances by Loan Type



Source: FRBNY Consumer Credit Panel/Equifax

Note: 30 or more days delinquent

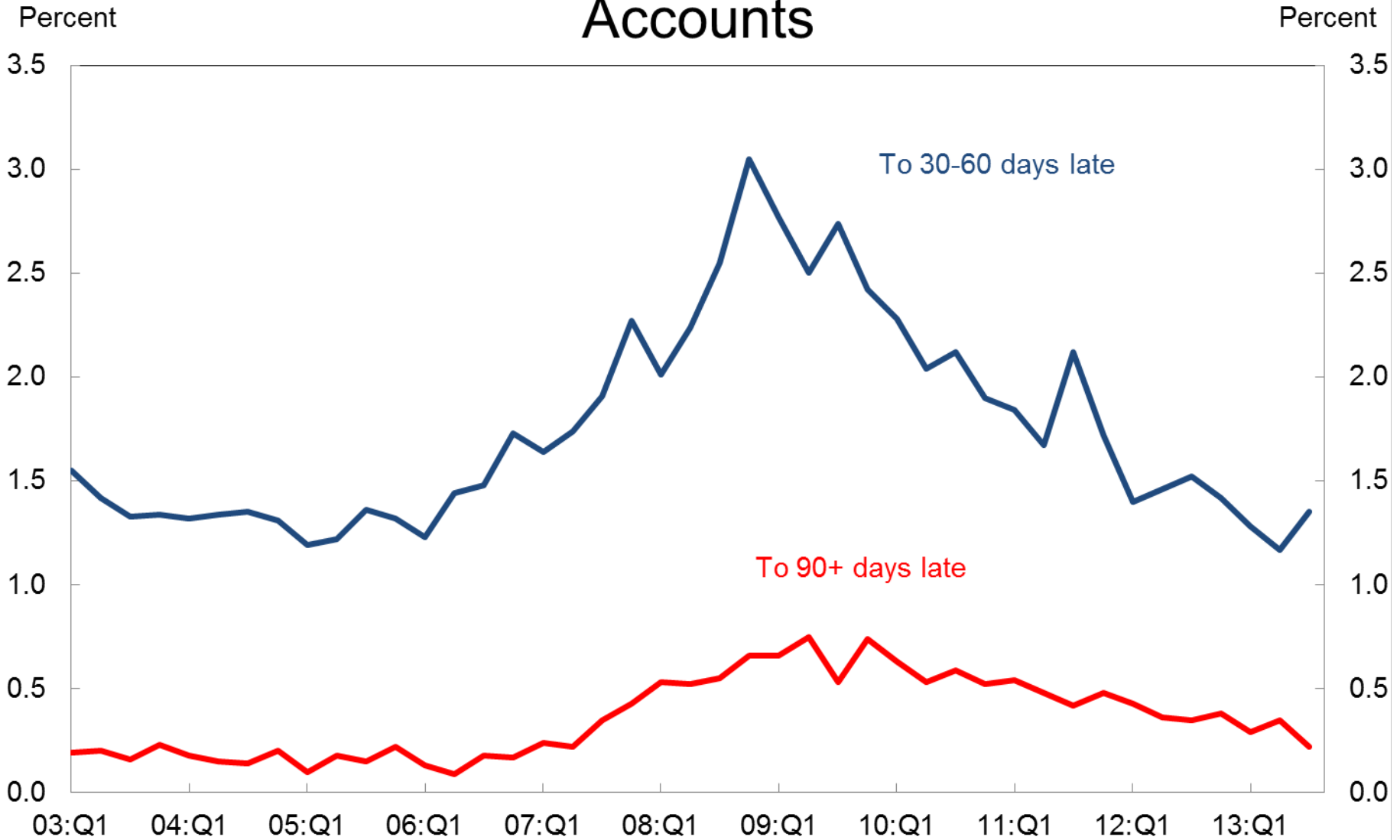
New Seriously Delinquent Balances by Loan Type



Source: FRBNY Consumer Credit Panel/Equifax

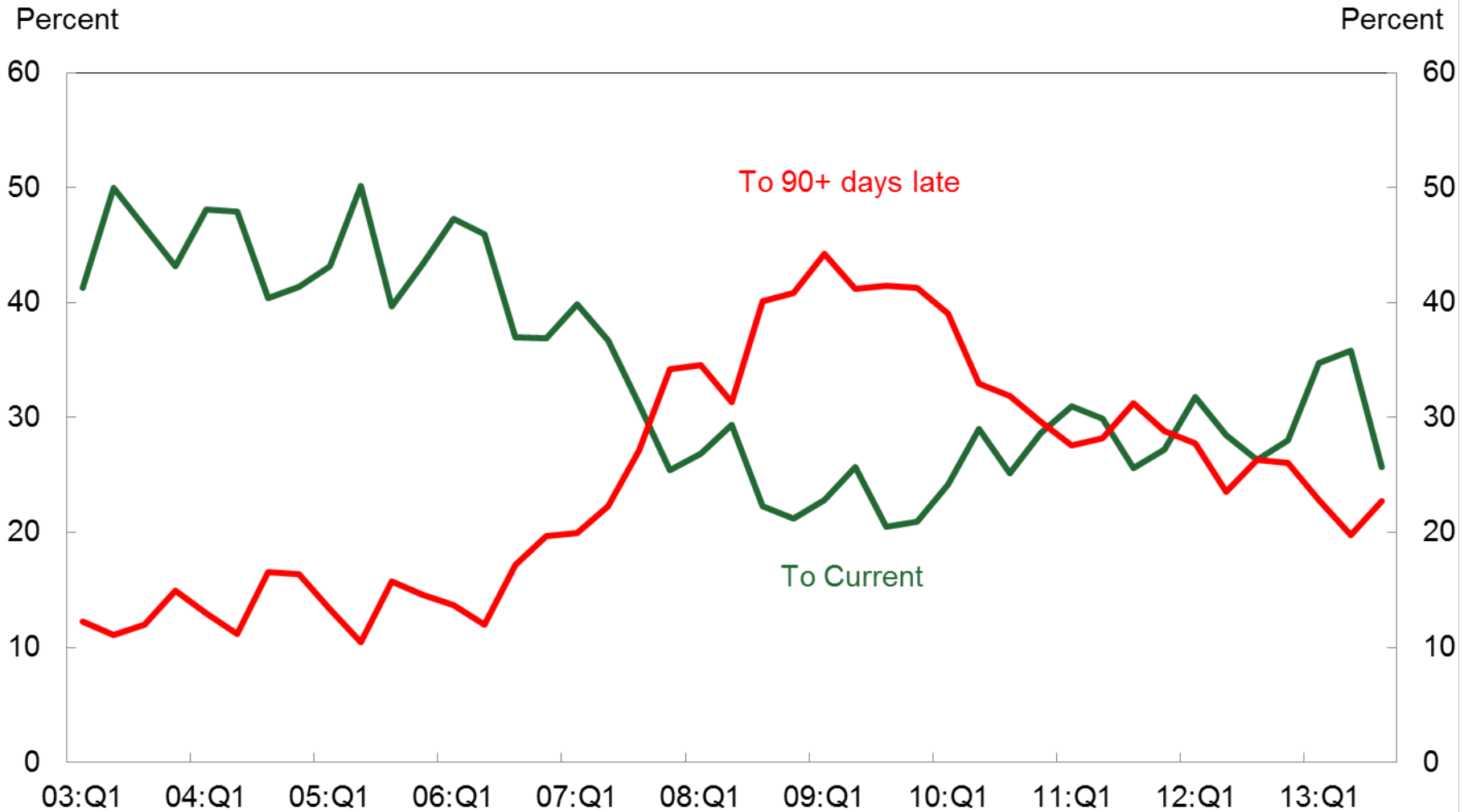
Note: 90 or more days delinquent

Quarterly Transition Rates for Current Mortgage Accounts



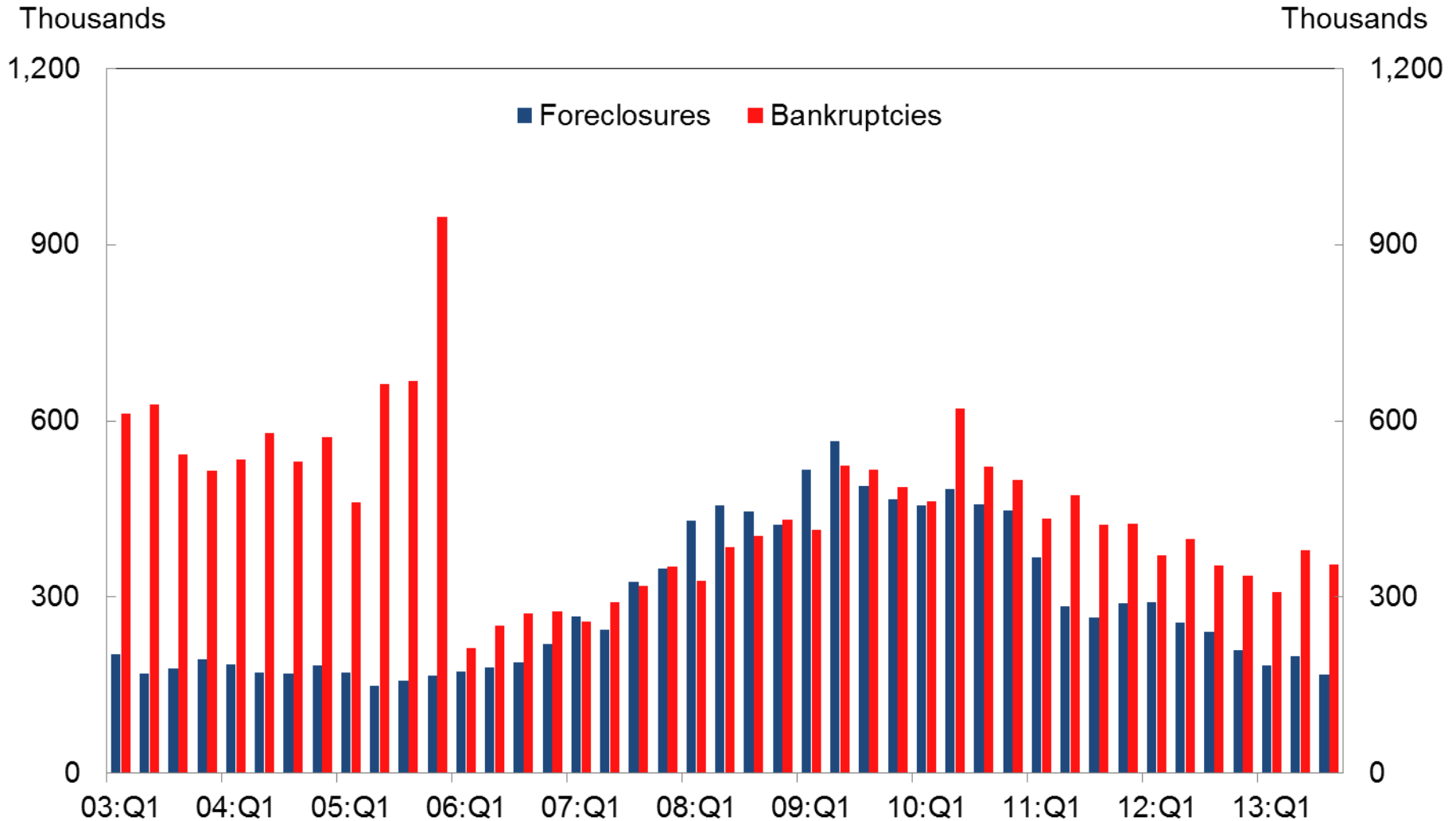
Source: FRBNY Consumer Credit Panel/Equifax

Quarterly Transition Rates for 30-60 Day Late Mortgage Accounts



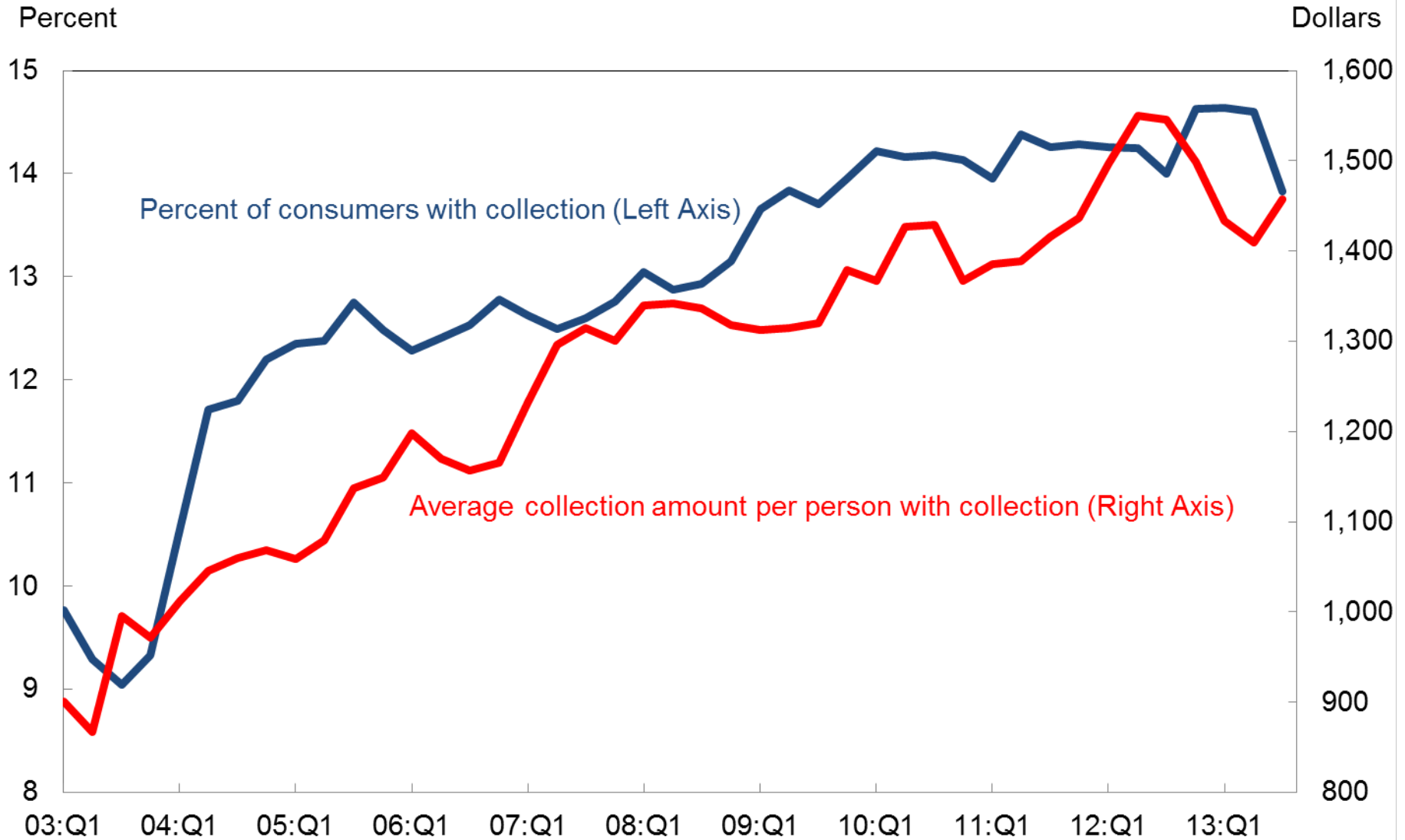
Source: FRBNY Consumer Credit Panel/Equifax

Number of Consumers with New Foreclosures and Bankruptcies



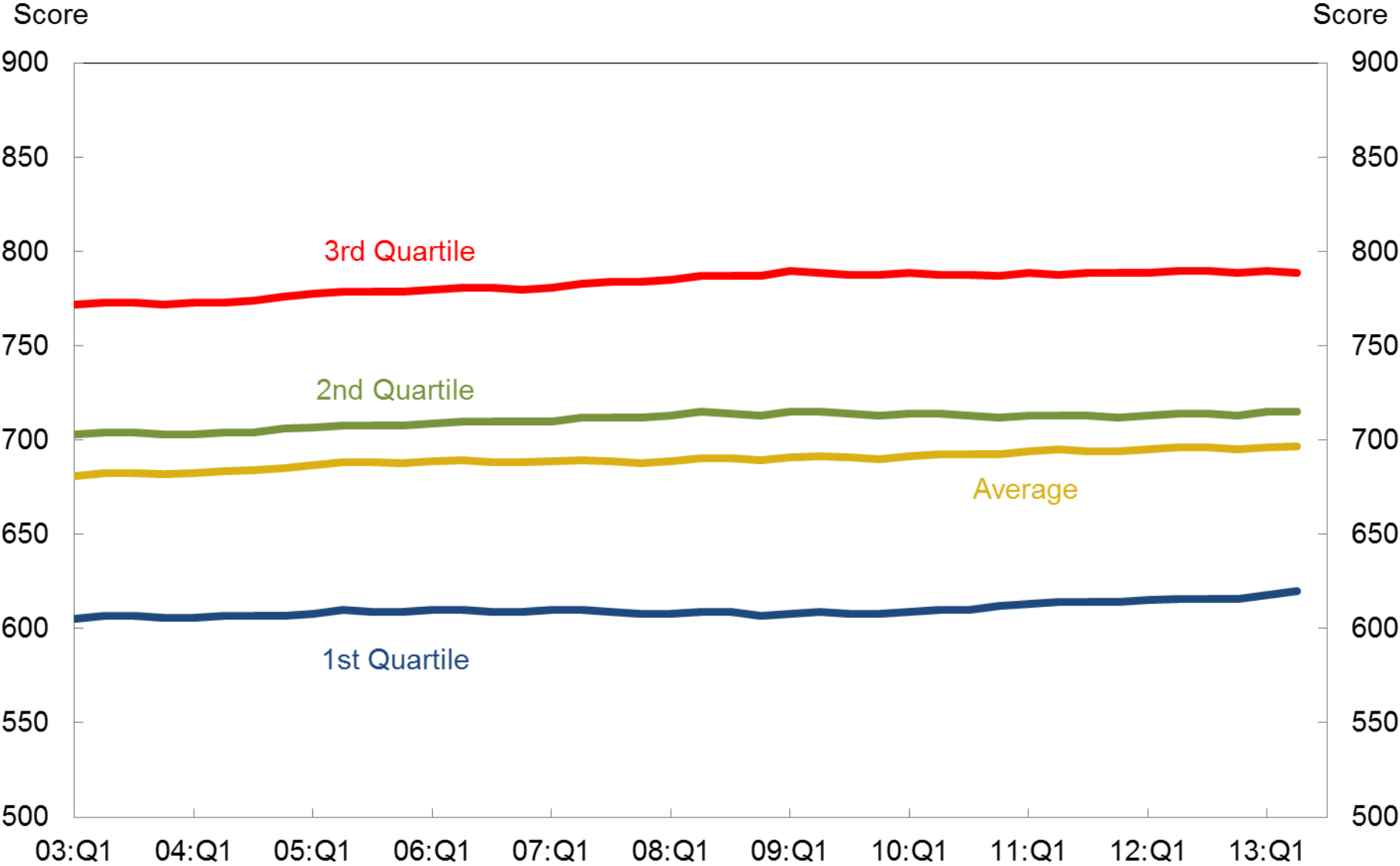
Source: FRBNY Consumer Credit Panel/Equifax

Third Party Collections



Source: FRBNY Consumer Credit Panel/Equifax

Consumer Credit Score Distribution

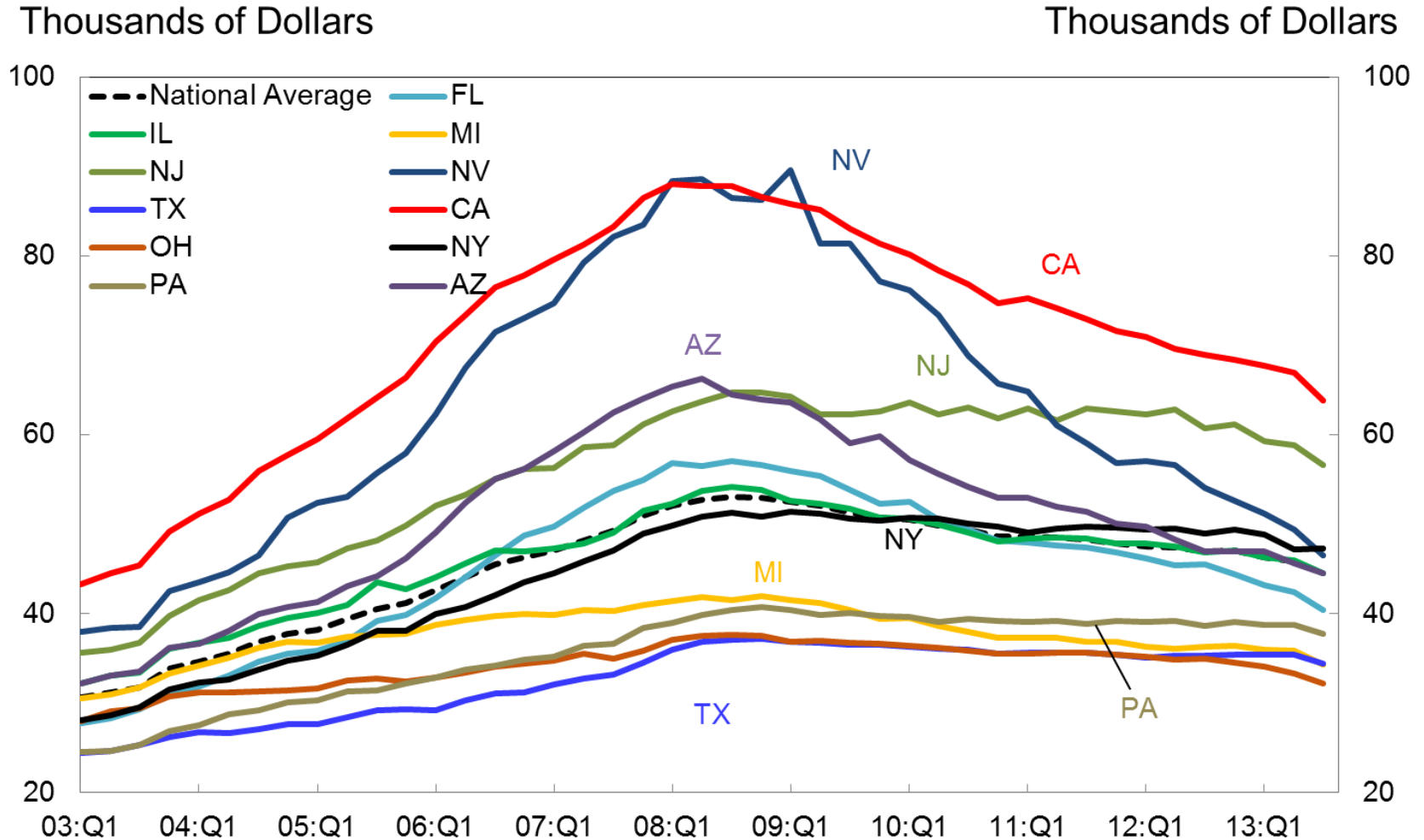


Source: FRBNY Consumer Credit Panel/Equifax

Note: Based on the population with a credit report

CHARTS FOR SELECT STATES

Total Debt Balance per Capita* by State



Source: FRBNY Consumer Credit Panel/Equifax

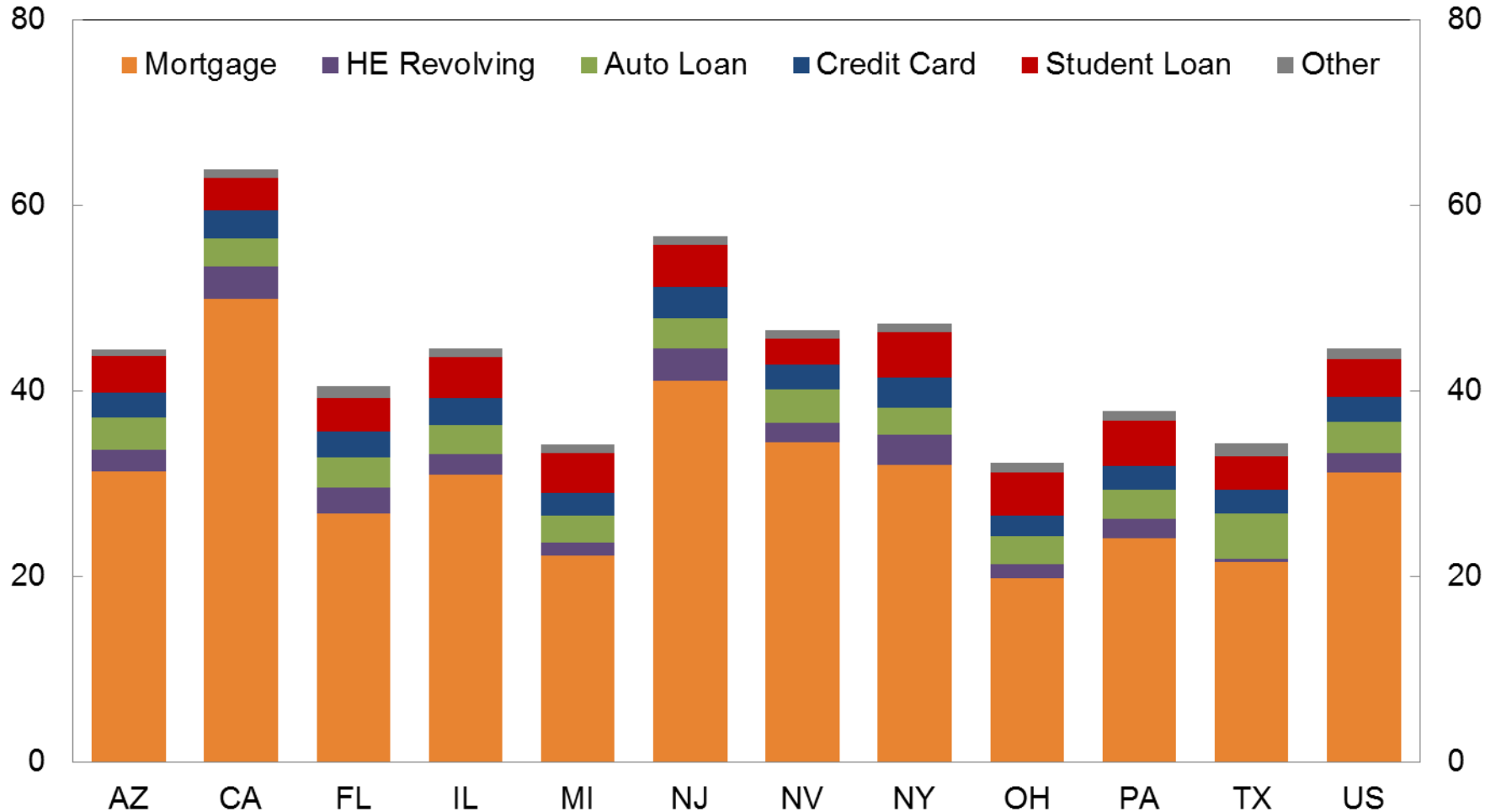
Note: *Based on the population with a credit report

In 2013:Q3, due to a change in credit reporting practices, there was a larger than usual increase in the number of entrants in the data with below-average debt activities, reducing the per capita debt balances. Without this technical change, the per capita debt would have increased in 2013:Q3.

Composition of Debt Balance per Capita* by State (2013 Q3)

Thousands of Dollars

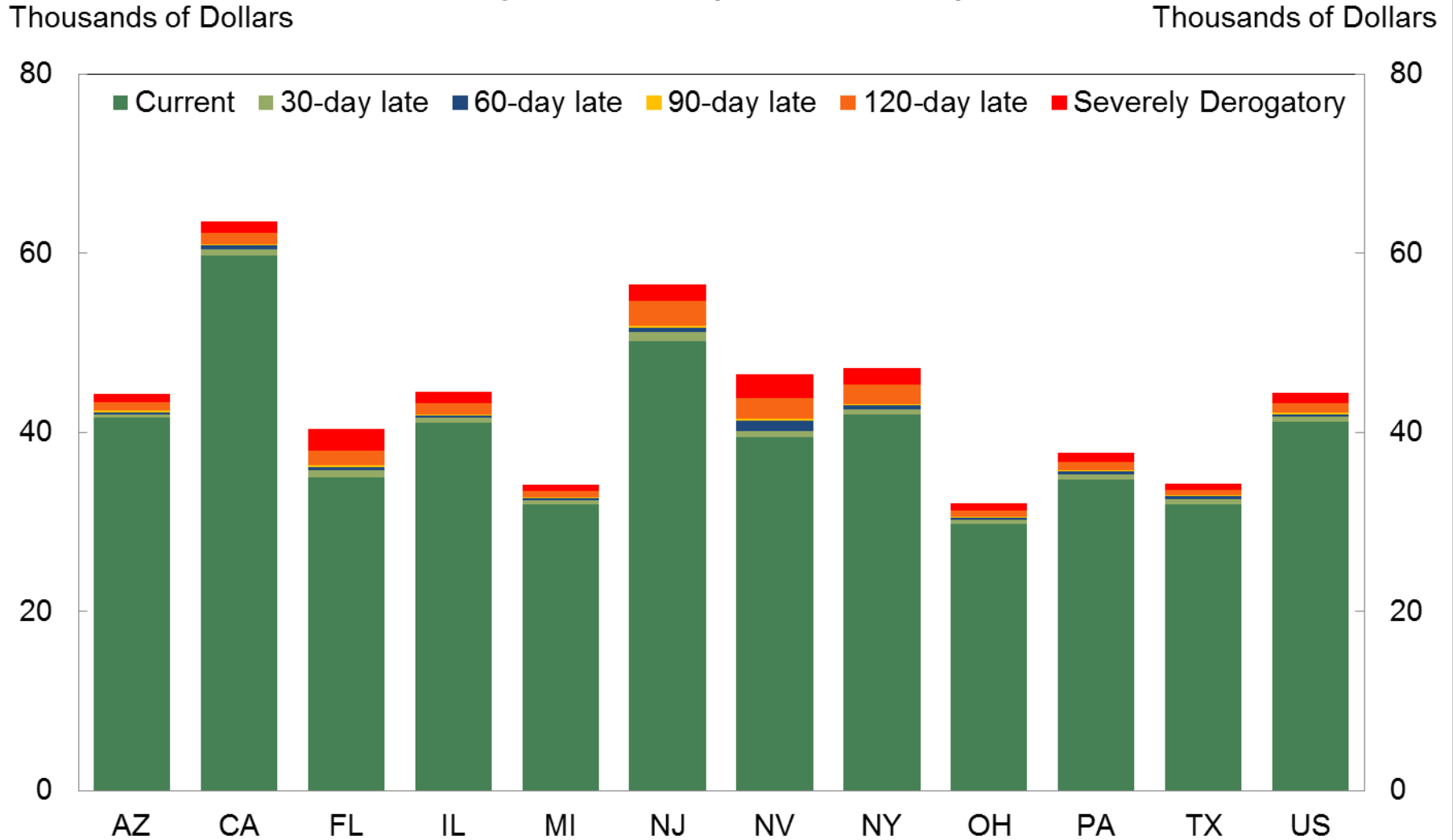
Thousands of Dollars



Source: FRBNY Consumer Credit Panel/Equifax

Note: * Based on the population with a credit report

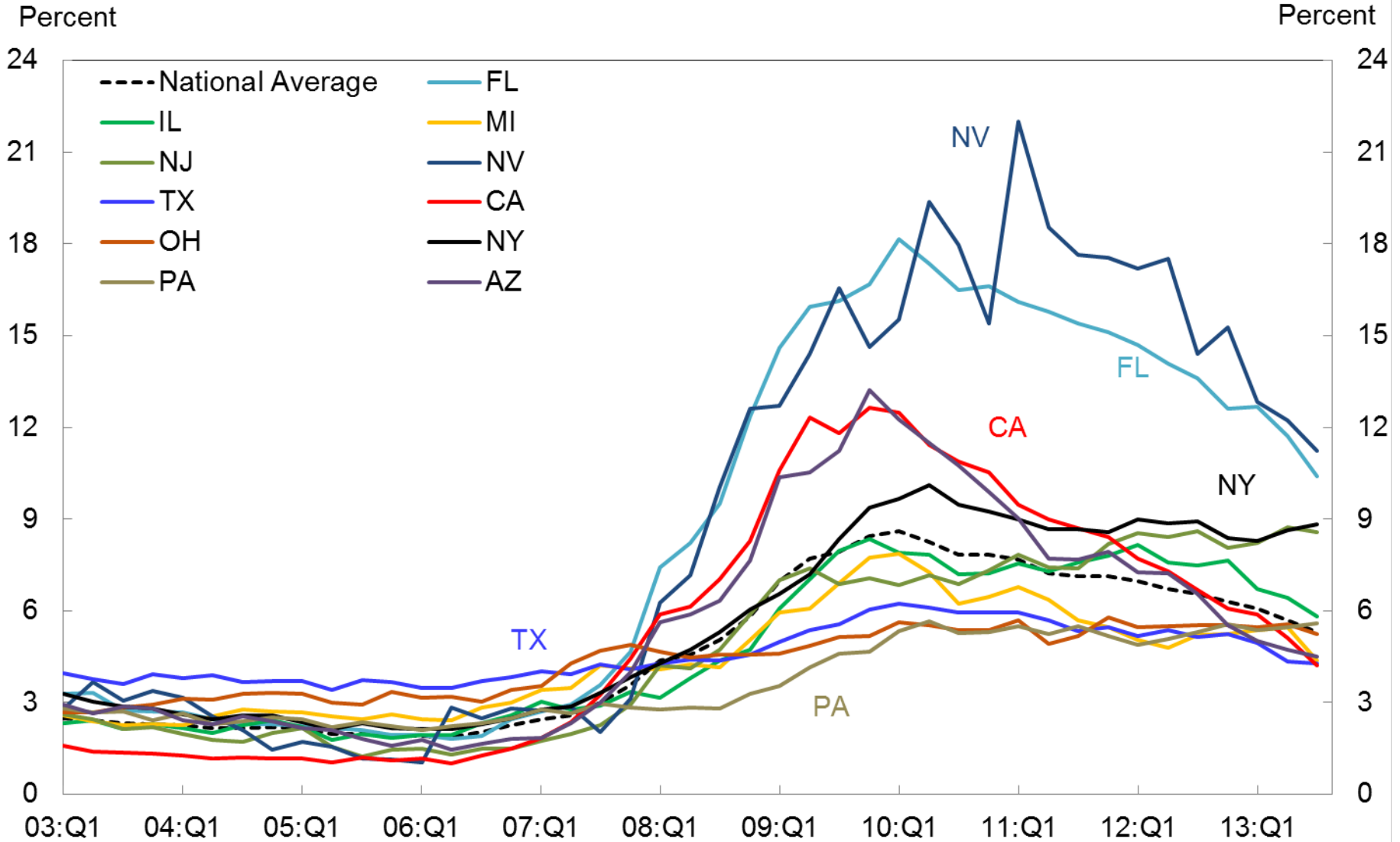
Delinquency Status of Debt Balance per Capita* by State (2013 Q3)



Source: FRBNY Consumer Credit Panel/Equifax

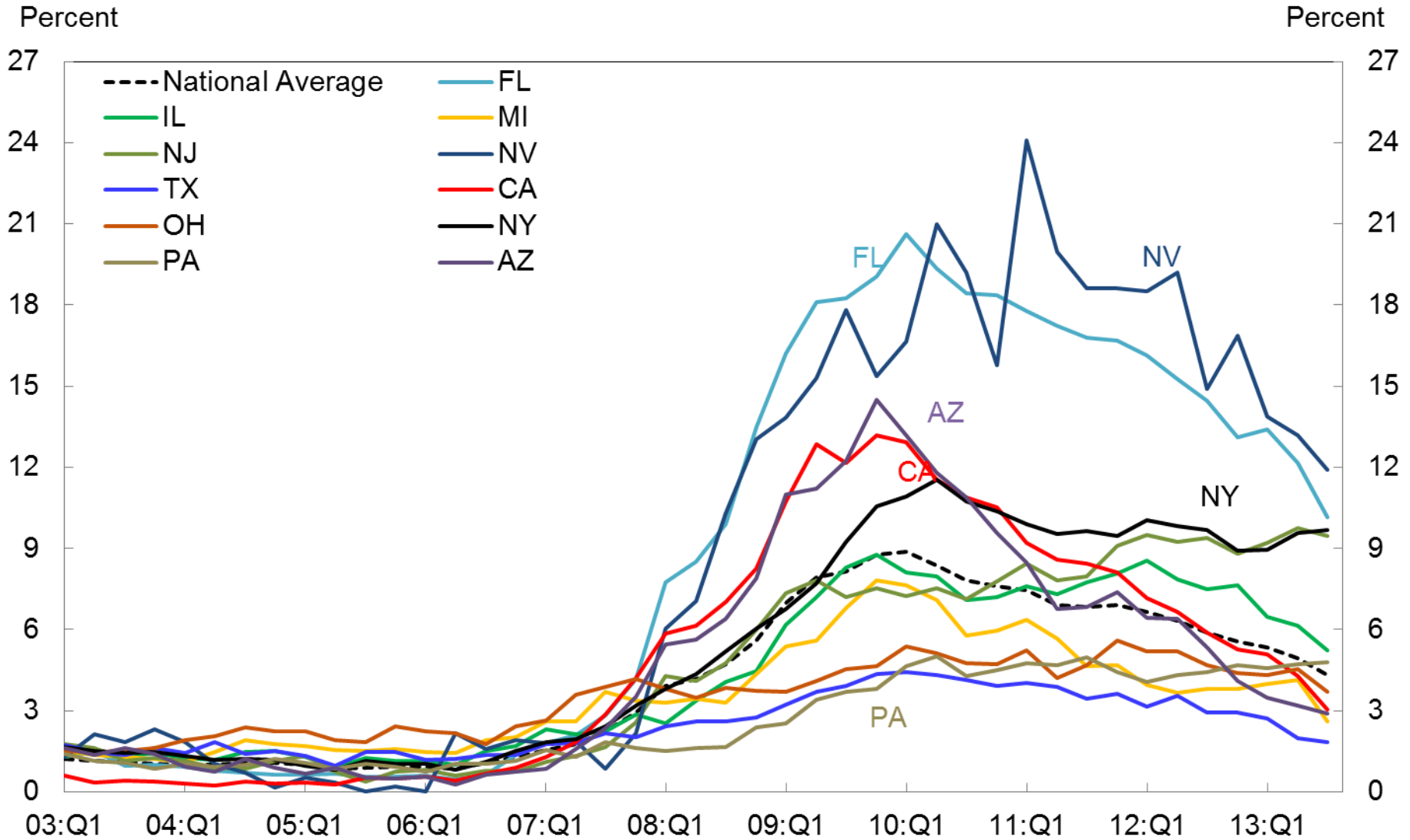
Note: * Based on the population with a credit report

Percent of Balance 90+ Days Late by State



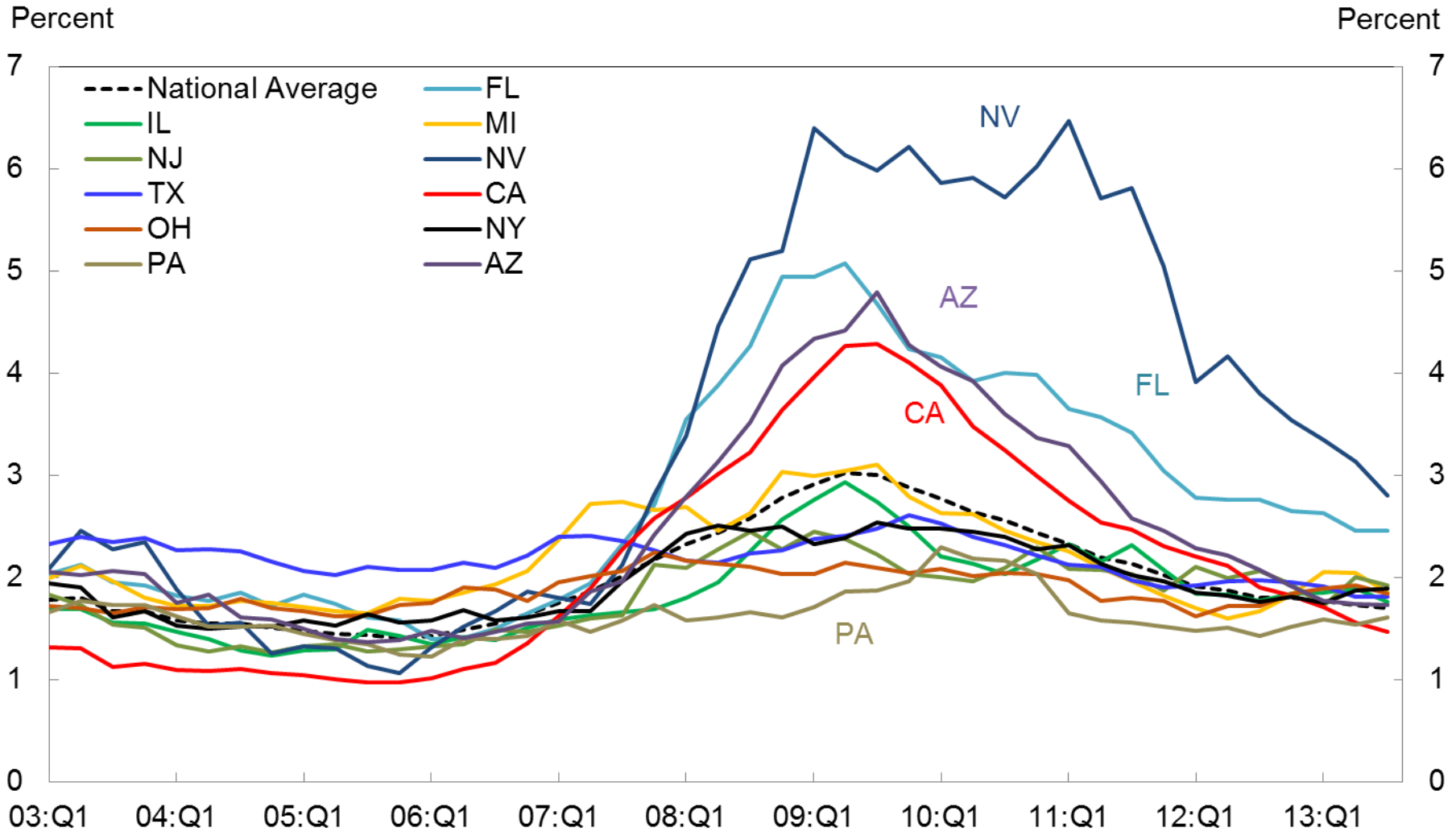
Source: FRBNY Consumer Credit Panel/Equifax

Percent of Mortgage Debt 90+ Days Late by State



Source: FRBNY Consumer Credit Panel/Equifax

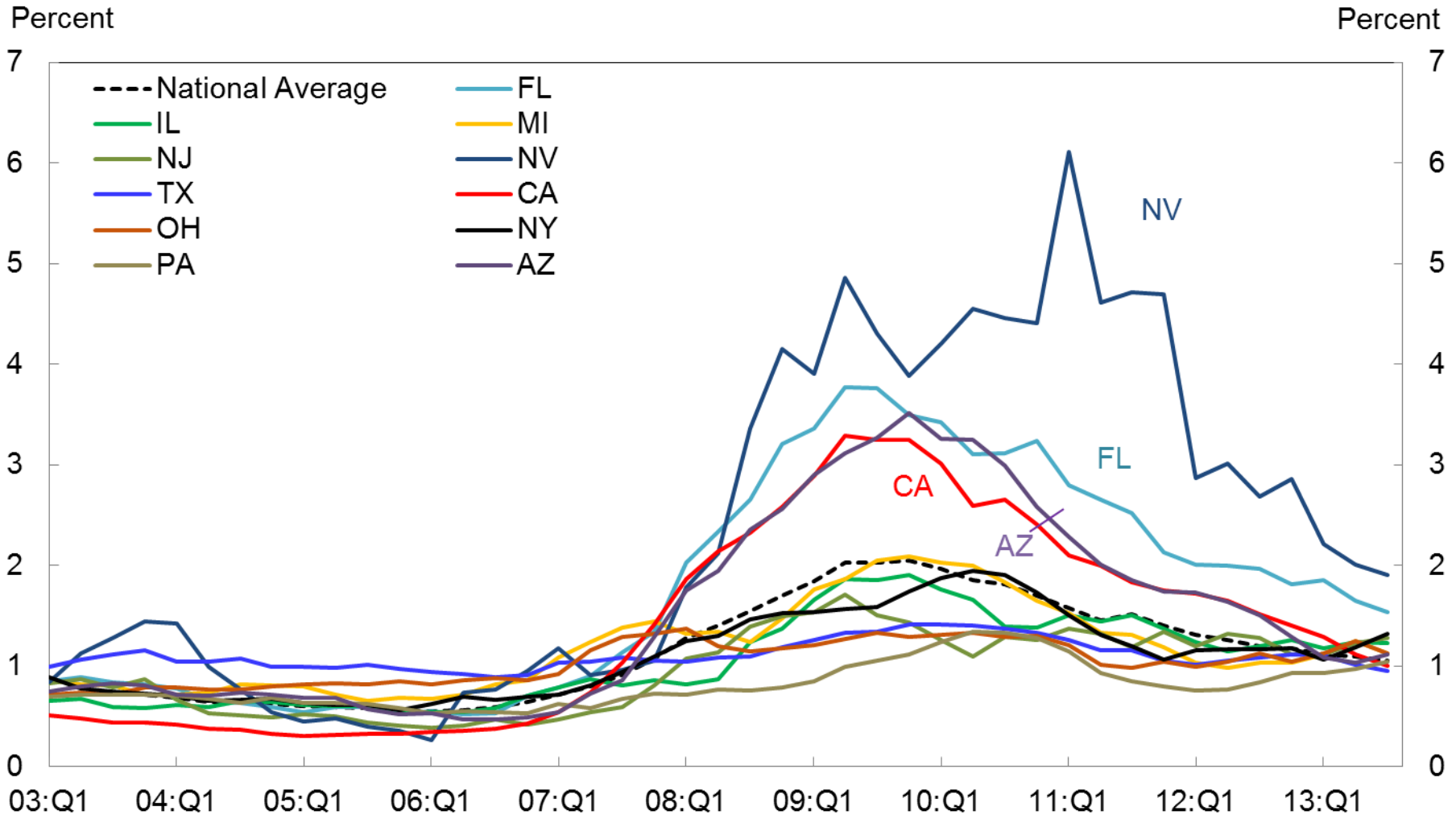
Quarterly Transition Rates into 30+ Days Late by State*



Source: FRBNY Consumer Credit Panel/Equifax

Note: *Four Quarter Moving Average, Rates from Current to 30+ Days Delinquent, All Accounts

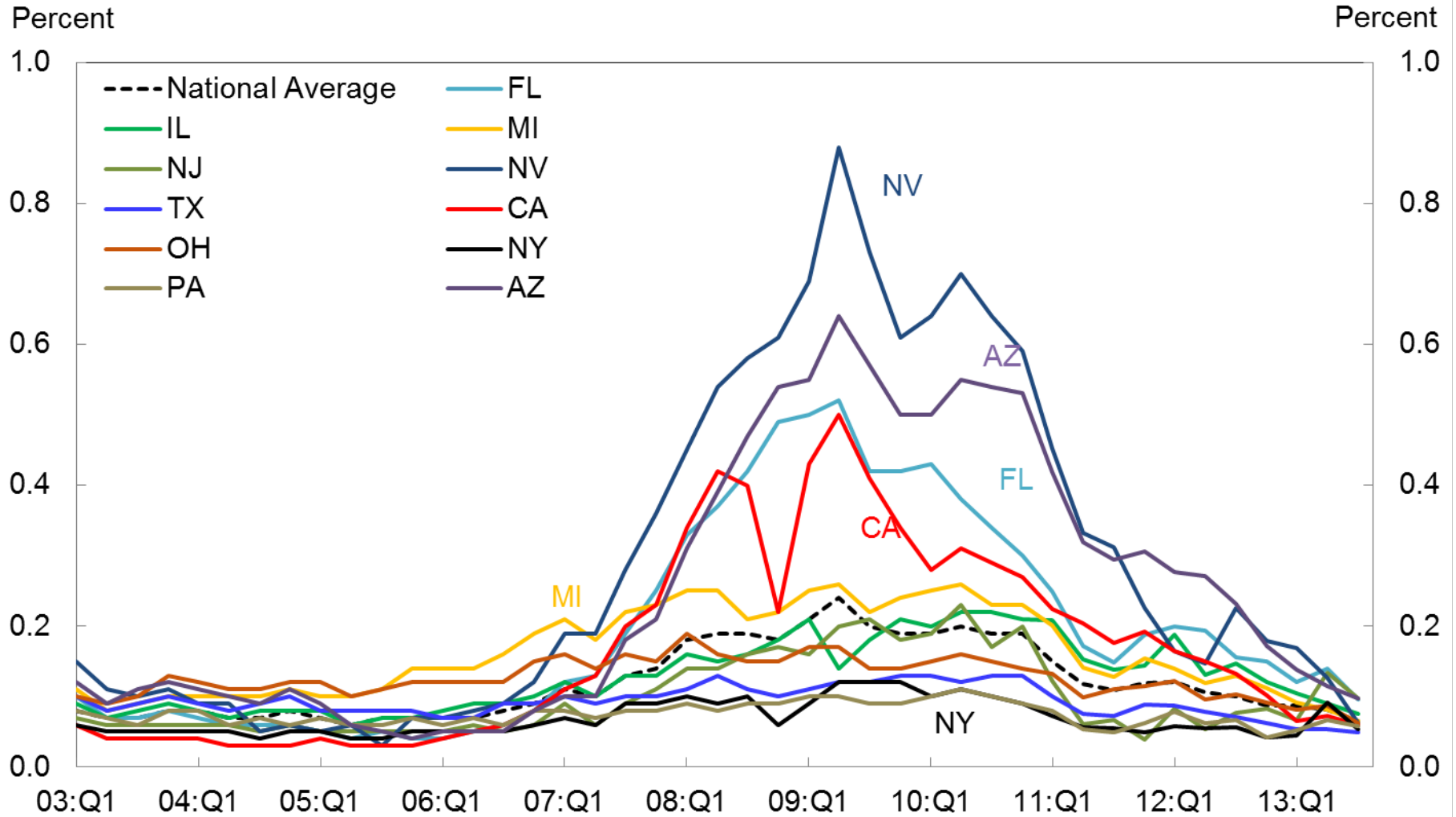
Quarterly Transition Rates into 90+ Days Late by State*



Source: FRBNY Consumer Credit Panel/Equifax

Note: *Four Quarter Moving Average, Rates from Current and up to 60 Days Delinquent to 90+ Days Delinquent, All Accounts

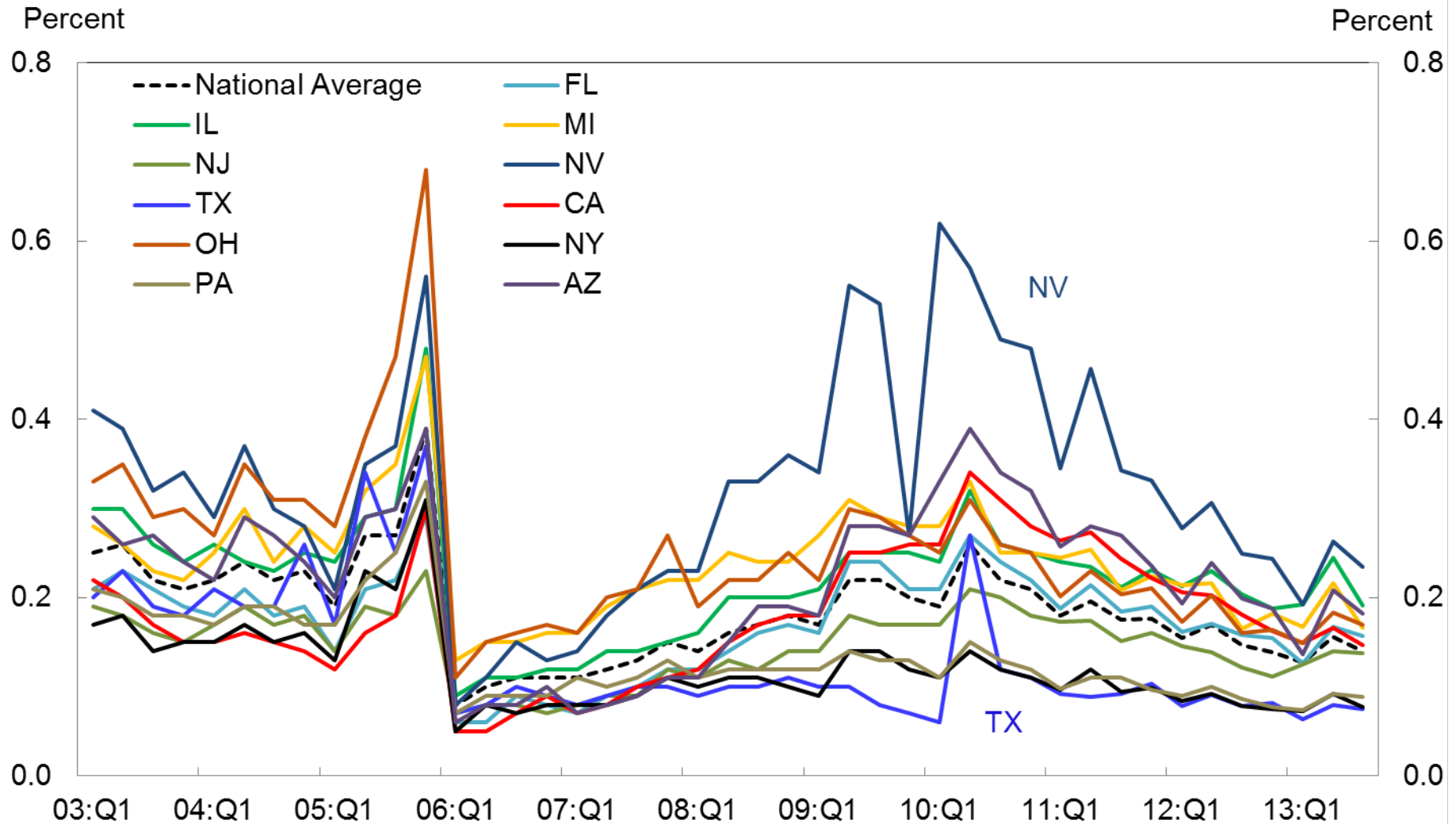
Percent of Consumers* with New Foreclosures by State



Source: FRBNY Consumer Credit Panel/Equifax

Note: * Based on the population with a credit report

Percent of Consumers* with New Bankruptcies by State



Source: FRBNY Consumer Credit Panel/Equifax

Note: * Based on the population with a credit report

Data Dictionary

The FRBNY Consumer Credit Panel consists of detailed Equifax credit-report data for a unique longitudinal quarterly panel of individuals and households from 1999 to 2013¹. The panel is a nationally representative 5% random sample of all individuals with a social security number and a credit report (usually aged 19 and over). We also sampled all other individuals living at the same address as the primary sample members, allowing us to track household-level credit and debt for a random sample of US households. The resulting database includes approximately 40 million individuals in each quarter. More details regarding the sample design can be found in Lee and van der Klaauw (2010).² A comprehensive overview of the specific content of consumer credit reports is provided in Avery, Calem, Canner and Bostic (2003).³

The credit report data in our panel primarily includes information on accounts that have been reported by the creditor within 3 months of the date that the credit records were drawn each quarter. Thus, accounts that are not currently reported on are excluded. Such accounts may be closed accounts with zero balances, dormant or inactive accounts with no balance, or accounts that when last reported had a positive balance. The latter accounts include accounts that were either subsequently sold, transferred, or paid off as well as accounts, particularly derogatory accounts, that are still outstanding but on which the lender has ceased reporting. According to Avery et al (2003), the latter group of noncurrently reporting accounts, with positive balances when last reported, accounted for approximately 8% of all credit accounts in their sample. For the vast majority of these accounts, and particularly for mortgage and installment loans, additional analysis suggested they had been closed (with zero balance) or transferred.⁴ Our exclusion of the latter accounts is comparable to some 'stale account rules' used by credit reporting companies, which treat noncurrently reporting revolving and nonrevolving accounts with positive balances as closed and with zero balance.

All figures shown in the tables and graphs are based on the 5% random sample of individuals. To reduce processing costs, we drew a 2% random subsample of these individuals, meaning that the results presented here are for a 0.1% random sample of individuals with credit reports, or approximately 240,000 individuals as of Q1 2012.⁵ In computing several of these statistics, account was taken of the joint or individual nature of various loan accounts. For example, to minimize biases due to double counting, in computing individual-level total balances, 50% of the balance associated with each joint account was attributed to that individual. Per-capita figures are computed by dividing totals for our sample by the total number of people in our sample, so these figures apply to the population of individuals who have a credit report.

In comparing aggregate measures of household debt presented in this report to those included in the Board of Governor's Flow Of Funds (FoF) Accounts, there are several important considerations. First, among the different components included in the FoF household debt measure (which also includes debt of nonprofit organizations), our measures are directly comparable to two of its components: home mortgage debt and consumer credit. Total mortgage debt and non-mortgage debt in the third quarter of 2009 were respectively \$9.7 and \$2.6 trillion, while the comparable amounts in the FoF for the same quarter were

¹ The reported aggregates especially in 2003-2004, may reflect some delays in the reporting of student loans by servicers to credit bureaus which could lead to some undercounting of student loan balances. Quarterly data prior to Q1 2003, excluding student loans, will remain available on the [Household Credit webpage](#).

² Lee, D. and W. van der Klaauw, "An introduction to the FRBNY Consumer Credit Panel", [2010].

³ Avery, R.B., P.S. Calem, G.B. Canner and R.W. Bostic, "An Overview of Consumer Data and Credit Reporting", Federal Reserve Bulletin, Feb. 2003, pp 47-73.

⁴ Avery et al (2003) found that for many nonreported mortgage accounts a new mortgage account appeared around the time the account stopped being reported, suggesting a refinance or that the servicing was sold. Most revolving and open non-revolving accounts with a positive balance require monthly payments if they remain open, suggesting the accounts had been closed. Noncurrently reporting derogatory accounts can remain unchanged and not requiring updating for a long time when the borrower has stopped paying and the creditor may have stopped trying to collect on the account. Avery et al report that some of these accounts appeared to have been paid off. ⁵

Due to relatively low occurrence rates we used the full 5% sample for the computation of new foreclosure and bankruptcy rates. Additionally, to capture and account for servicer discrepancies, we used the 1% sample for student loan data. For all other graphs, we found the 0.1% sample to provide a very close representation of the 5% sample.

\$10.3 and \$2.5 trillion, respectively.⁶ Second, a detailed accounting for the remaining differences between the debt measures from both data sources will require a more detailed breakdown and documentation of the computation of the FoF measures.⁷

Loan types. In our analysis we distinguish between the following types of accounts: mortgage accounts, home equity revolving accounts, auto loans, bank card accounts, student loans and other loan accounts. *Mortgage accounts* include all mortgage installment loans, including first mortgages and home equity installment loans (HEL), both of which are closed-end loans. *Home Equity Revolving accounts* (aka Home Equity Line of Credit or *HELOC*), unlike home equity installment loans, are home equity loans with a revolving line of credit where the borrower can choose when and how often to borrow up to an updated credit limit. *Auto Loans* are loans taken out to purchase a car, including Auto Bank loans provided by banking institutions (banks, credit unions, savings and loan associations), and Auto Finance loans, provided by automobile dealers and automobile financing companies. *Bankcard accounts* (or credit card accounts) are revolving accounts for banks, bankcard companies, national credit card companies, credit unions and savings & loan associations. *Student Loans* include loans to finance educational expenses provided by banks, credit unions and other financial institutions as well as federal and state governments. The *Other* category includes Consumer Finance (sales financing, personal loans) and Retail (clothing, grocery, department stores, home furnishings, gas etc) loans.

Our analysis excludes authorized user trades, disputed trades, lost/stolen trades, medical trades, child/family support trades, commercial trades and, as discussed above, inactive trades (accounts not reported on within the last 3 months).

Total debt balance. Total balance across all accounts, excluding those in bankruptcy.

Number of open, new and closed accounts. Total number of open accounts, number of accounts opened within the last 12 months. Number of closed accounts is defined as the difference between the number of open accounts 12 months ago plus the number of accounts opened within the last 12 months, minus the total number of open accounts at the current date.

Inquiries. Number of credit-related consumer-initiated inquiries reported to the credit reporting agency in the past 6 months. Only 'hard pulls' are included, which are voluntary inquiries generated when a consumer authorizes lenders to request a copy of their credit report. It excludes inquiries made by creditors about existing accounts (for example to determine whether they want to send the customer pre-approved credit applications or to verify the accuracy of customer-provided information) and inquiries made by consumers themselves. Note that inquiries are credit reporting company specific and not all inquiries associated with credit activities are reported to each credit reporting agency. Moreover, the reporting practices for the credit reporting companies may have changed during the period of analysis.

High credit and balance for credit cards. Total amount of high credit on all credit cards held by the consumer. High credit is either the credit limit, or highest balance ever reported during history of this loan. As reported by Avery et al (2003) the use of the highest-balance measure for credit limits on accounts in which limits are not reported likely understates the actual credit limits available on those accounts.

High credit and balance for HE Revolving. Same as for credit cards, but now applied to HELOCs.

Credit utilization rates (for revolving accounts). Computed as proportion of available credit in use (outstanding balance divided by credit limit), and for reasons discussed above are likely to overestimate actual credit utilization.

⁶ Flow of Funds Accounts of the United States, Flows and Outstandings, Third Quarter 2009, Board of Governors, Table L.100.

⁷ Our debt totals exclude debt held by individuals without social security numbers. Additional information suggests that total debt held by such individuals is relatively small and accounts for little of the difference.

Delinquency status. Varies between current (paid as agreed), 30-day late (between 30 and 59 day late; not more than 2 payments past due), 60-day late (between 60 and 89 days late; not more than 3 payments past due), 90-day late (between 90 and 119 days late; not more than 4 payments past due), 120-day late (at least 120 days past due; 5 or more payments past due) or collections, and severely derogatory (any of the previous states combined with reports of a repossession, charge off to bad debt or foreclosure). Not all creditors provide updated information on payment status, especially after accounts have been derogatory for a longer period of time. Thus the payment performance profiles obtained from our data may to some extent reflect reporting practices of creditors.

Percent of balance 90+ days late. Percent of balance that is either 90-day late, 120-day late or severely derogatory. 90+ days late is synonymous to seriously delinquent.

New foreclosures. Number of *individuals* with foreclosures first appearing on their credit report during the past 3 months. Based on foreclosure information provided by lenders (account level foreclosure information) as well as through public records. Note that since borrowers may have multiple real estate loans, this measure is conceptually different from foreclosure rates often reported in the press. For example, a borrower with a mortgage currently in foreclosure would not be counted here if he receives a foreclosure notice on an additional mortgage account. In the case of joint mortgages, both borrowers' reports indicate the presence of a foreclosure notice in the last 3 months, and both are counted here.

New bankruptcies. New bankruptcies first reported during the past 3 months. Based on bankruptcy information provided by lenders (account level bankruptcy information) as well as through public records.

Collections. Number and amount of 3rd party collections (i.e. collections not being handled by original creditor) on file within the last 12 months. Includes both public record and account level 3rd party collections information. As reported by Avery et al (2003), only a small proportion of collections are related to credit accounts with the majority of collection actions being associated with medical bills and utility bills.

Consumer Credit Score. Credit score is the Equifax Risk Score 3.0. It was developed by Equifax and predicts the likelihood of a consumer becoming seriously delinquent (90+ days past due). The score ranges from 280-850, with a higher score being viewed as a better risk than someone with a lower score.

New (seriously) delinquent balances and transition rates. New (seriously) delinquent balance reported in each loan category. For mortgages, this is based on the balance of each account at the time it enters (serious) delinquency, while for other loan types it is based on the net increase in the aggregate (seriously) delinquent balance for all accounts of that loan type belonging to an individual. **Transition rates.** The transition rate is the new (seriously) delinquent balance, expressed as a percent of the previous quarter's balance that was not (seriously) delinquent.

Newly originated installment loan balances. We calculate the balance on newly originated mortgage loans as they first appear on an individual's credit report. For auto loans we compare the total balance and number of accounts on an individual credit report in consecutive quarters. New auto loan originations are then defined as increases in the balance accompanied by increases in the number of accounts reported.

Cover photo credits clockwise from top right: Andrew Love/flickr.com, The Truth About.../flickr.com, Casey Serin/flickr.com, Microsoft.com.

© 2013. Federal Reserve Bank of New York. Equifax is a registered trademark of Equifax Inc. All rights reserved.