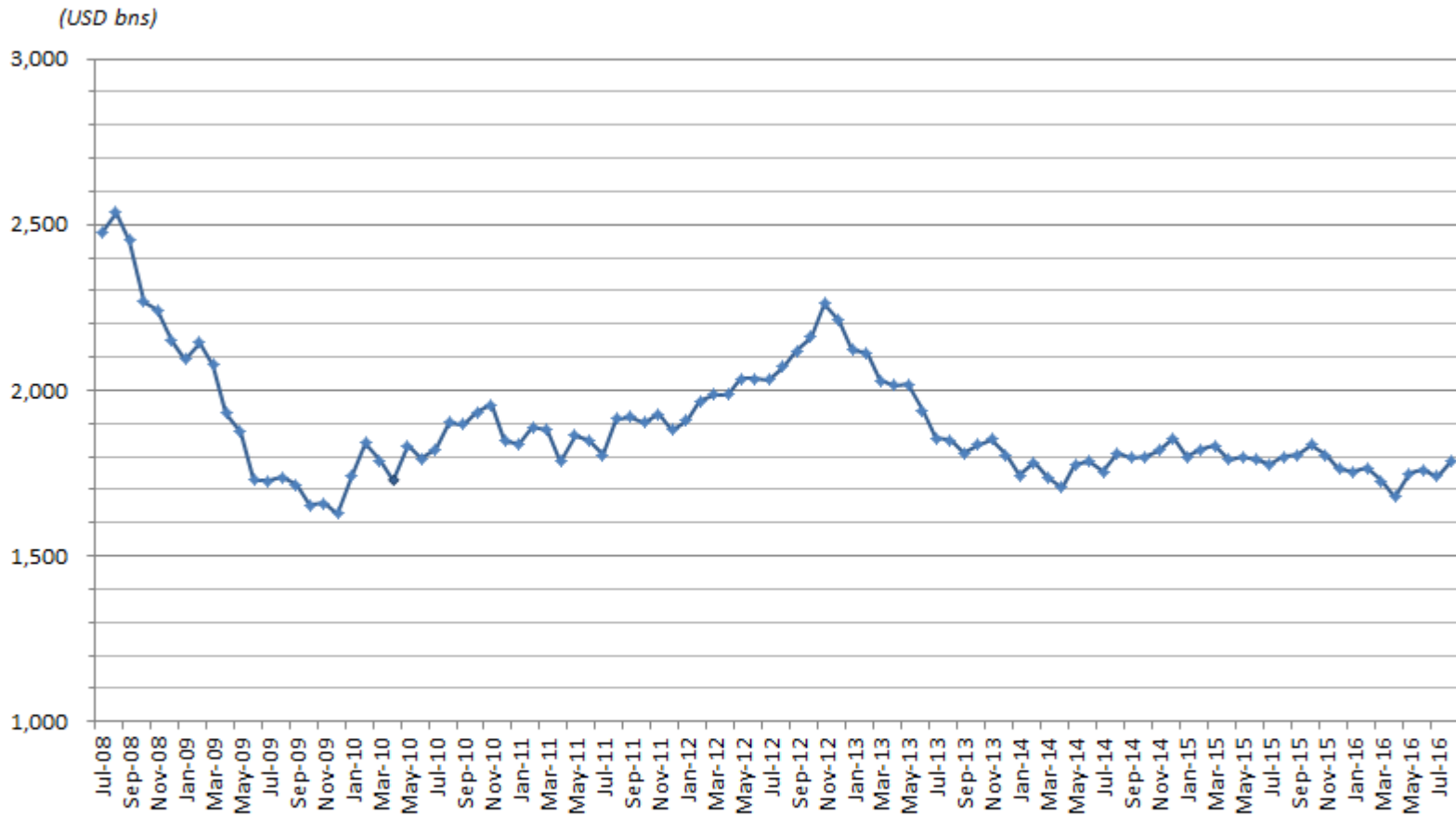


Daily Average Collateral Value Financed in the Tri-Party Repo Market*

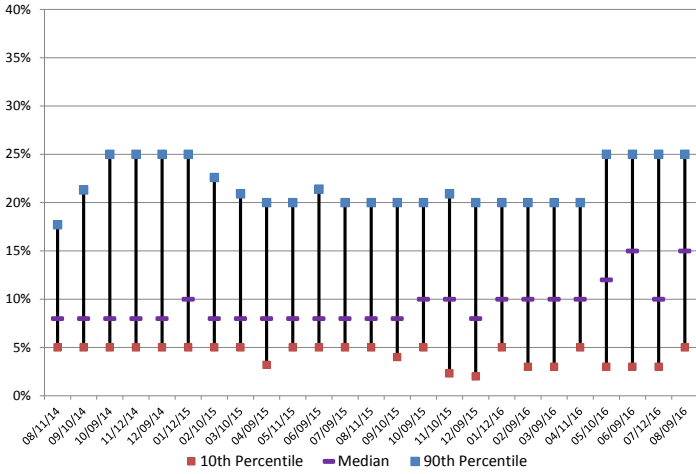


*Figures include GCF repo transactions

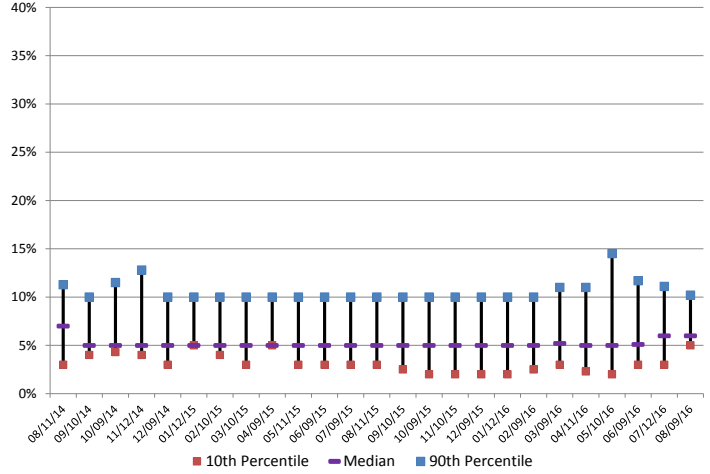
Source: Bank of New York Mellon, JP Morgan Chase

Federal Reserve Bank of New York

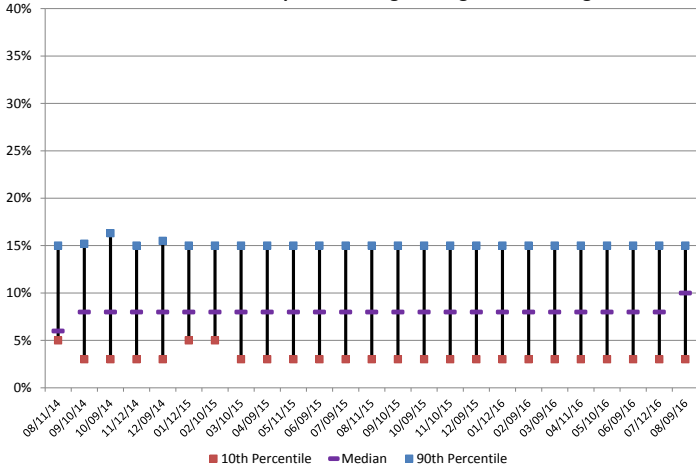
Non Investment Grade ABS Margins: August 2014 - August 2016



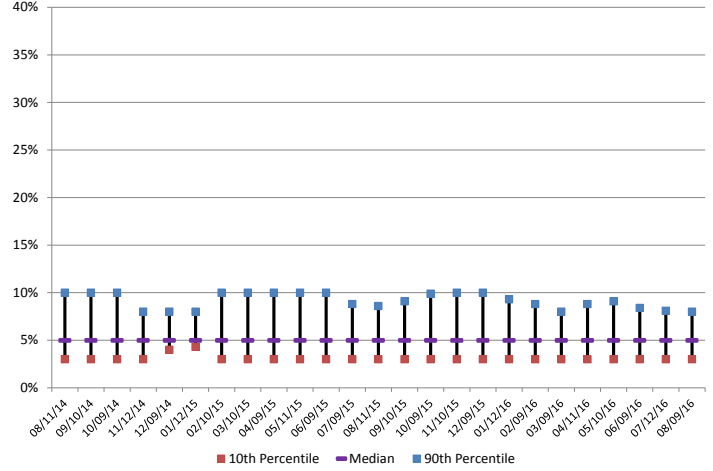
Investment Grade ABS Margins: August 2014 - August 2016



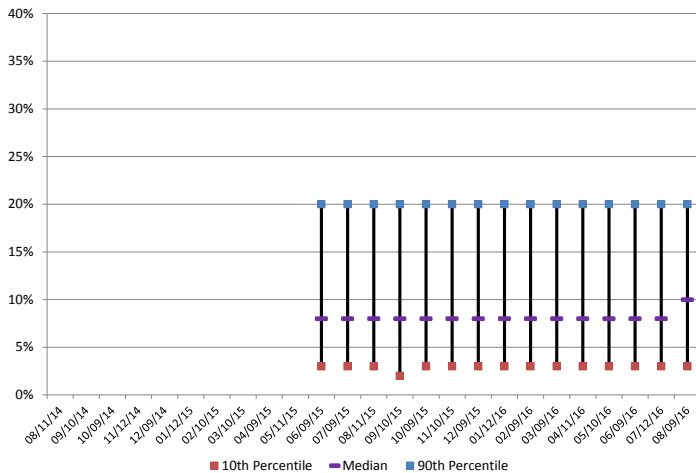
Non Investment Grade Corporates Margins: August 2014 - August 2016



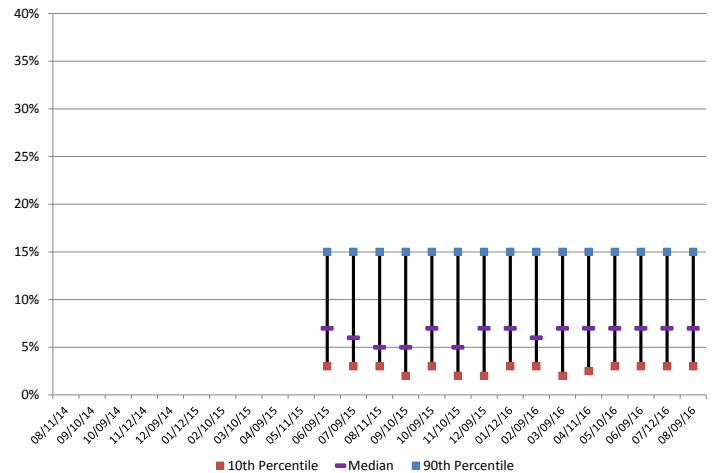
Investment Grade Corporates Margins: August 2014 - August 2016



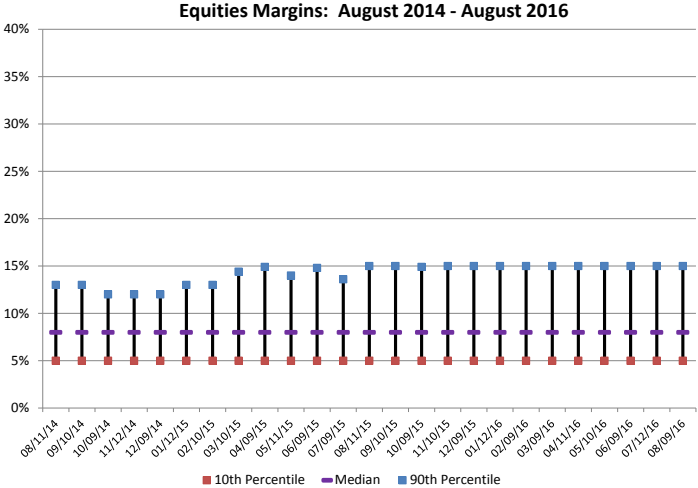
CMO Private Label Non Investment Grade Margins: August 2014 - August 2016*



CMO Private Label Investment Grade Margins: August 2014 - August 2016*



* A breakdown of CMO margin data between investment grade and non investment grade is not available prior to June 2015



Source: TPR Task Force, BNYM, JPMC