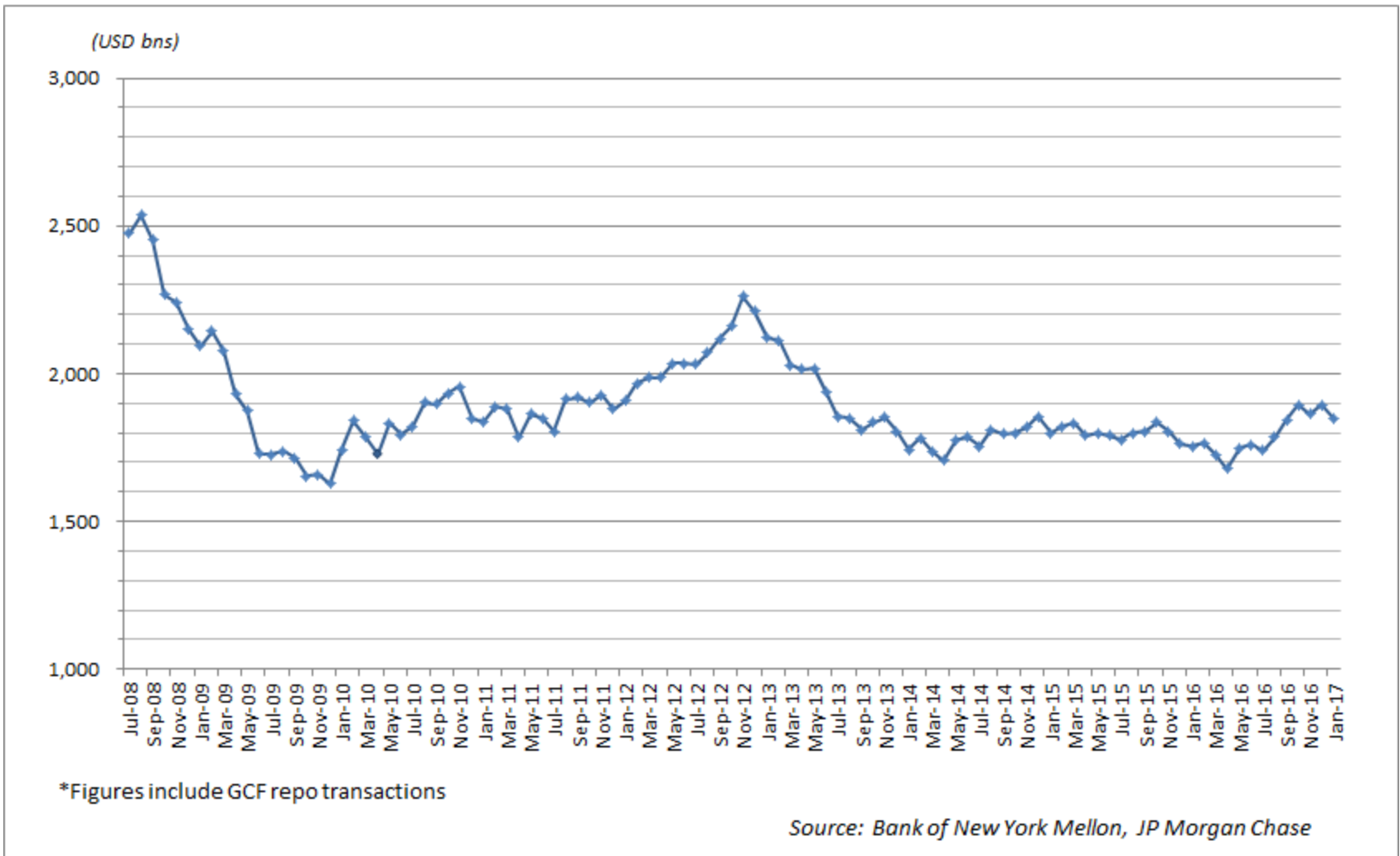
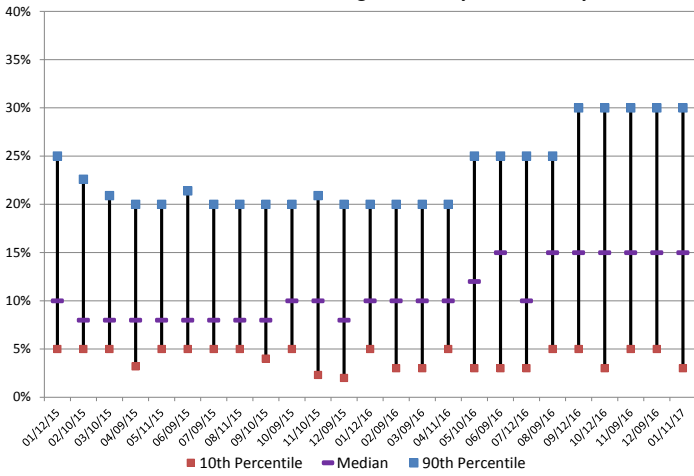


Daily Average Collateral Value Financed in the Tri-Party Repo Market*

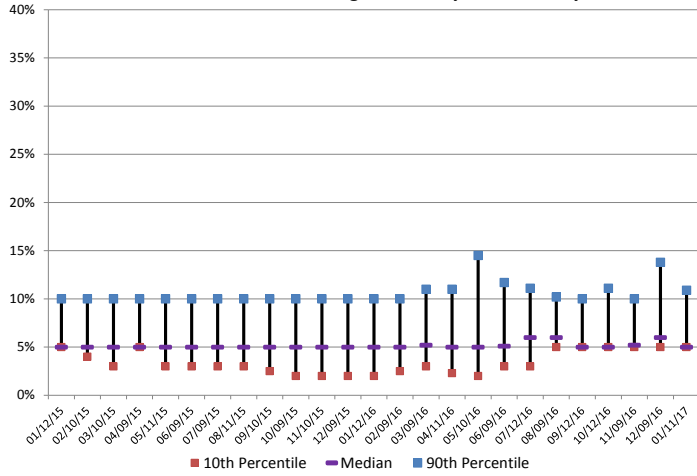


Federal Reserve Bank of New York

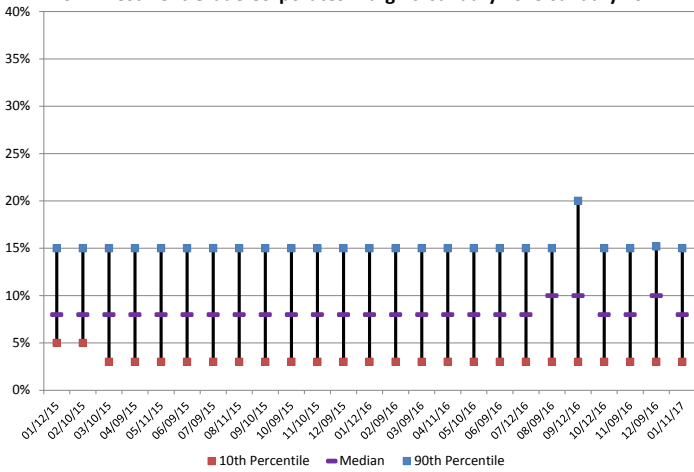
Non Investment Grade ABS Margins: January 2015-January 2017



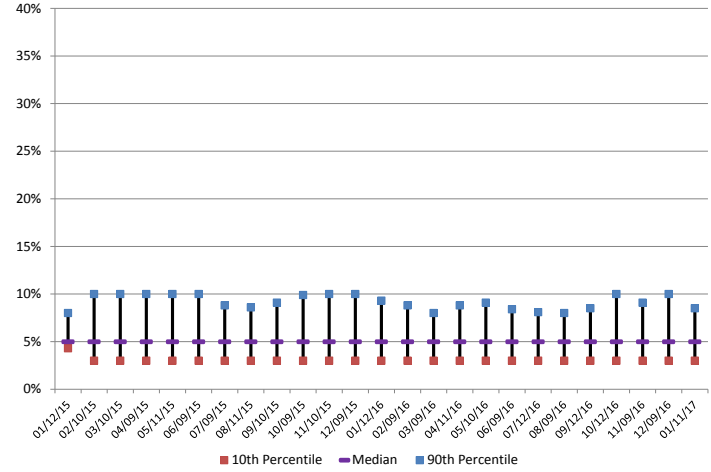
Investment Grade ABS Margins: January 2015-January 2017



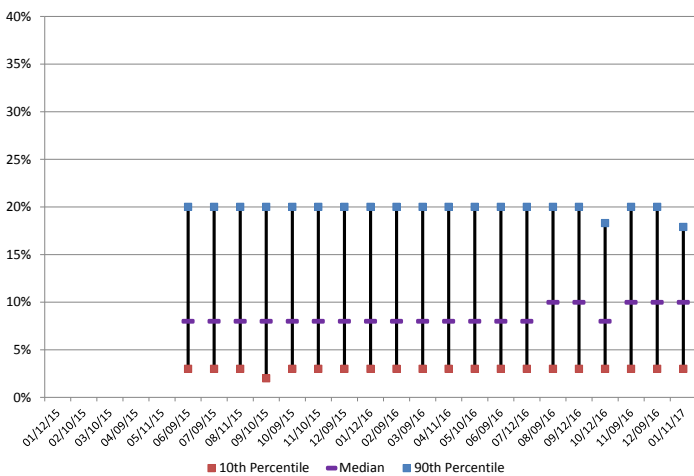
Non Investment Grade Corporates Margins: January 2015-January 2017



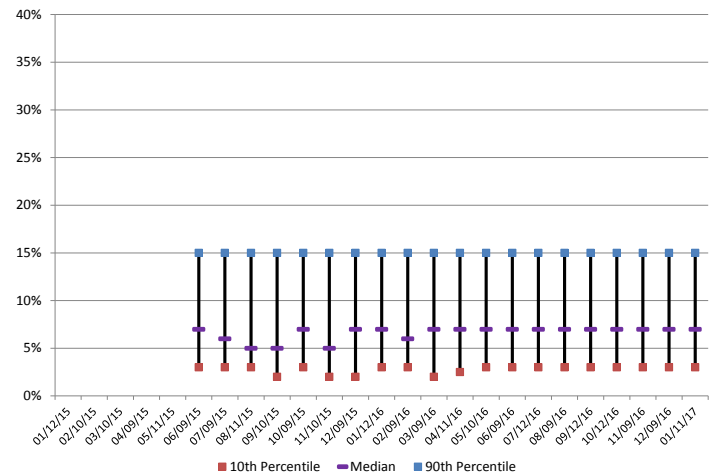
Investment Grade Corporates Margins: January 2015-January 2017



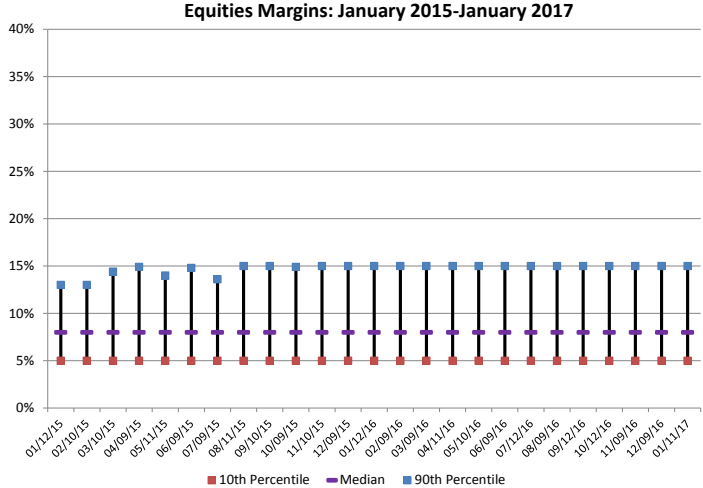
CMO Private Label Non Investment Grade Margins: January 2015-January 2017*



CMO Private Label Investment Grade Margins: January 2015-January 2017*



* A breakdown of CMO margin data between investment grade and non investment grade is not available prior to June 2015



Source: TPR Task Force, BNYM, JPMC