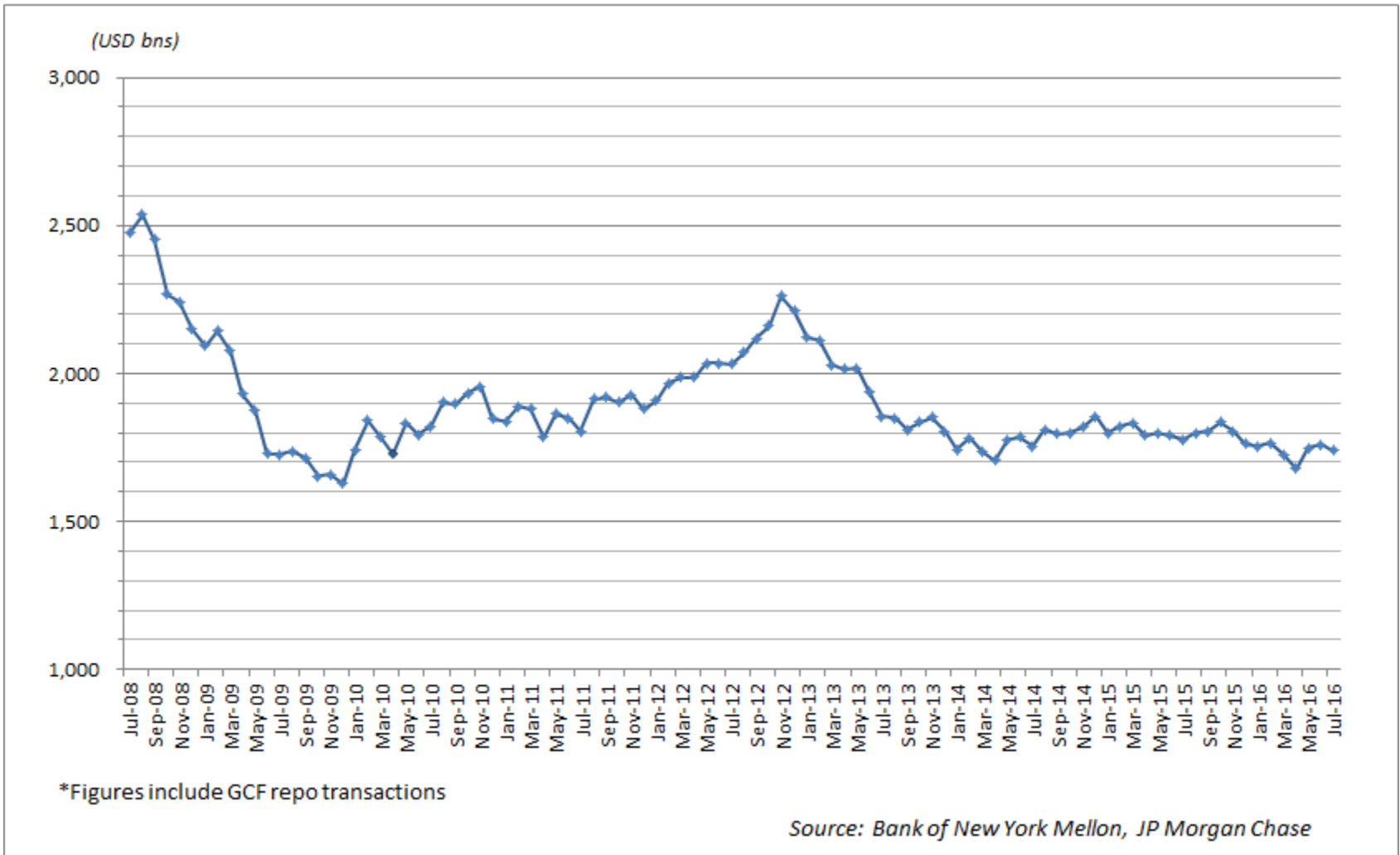
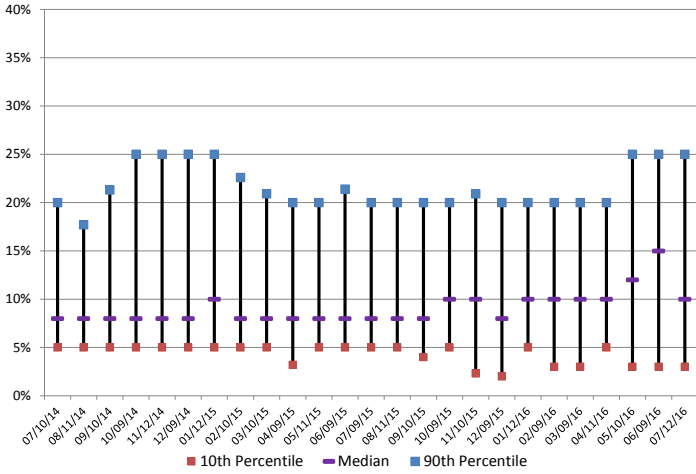


Daily Average Collateral Value Financed in the Tri-Party Repo Market*

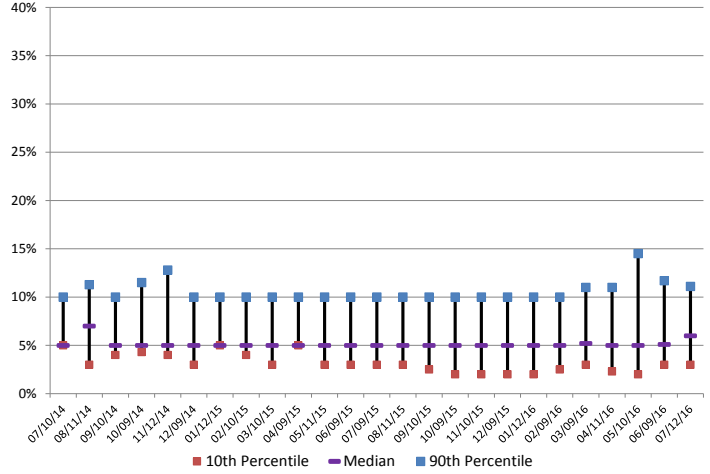


Federal Reserve Bank of New York

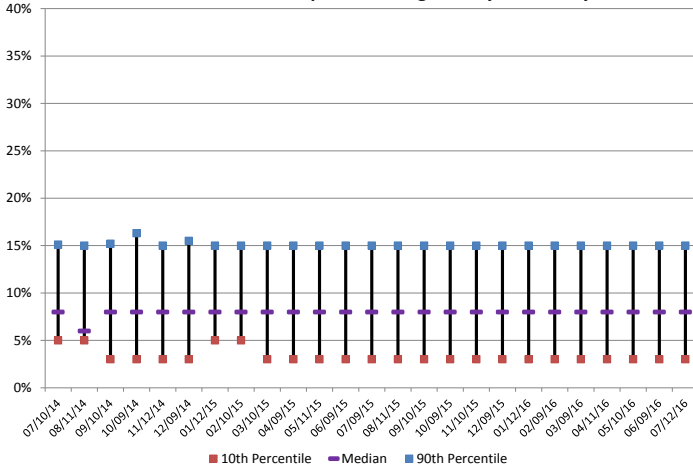
Non Investment Grade ABS Margins: July 2014 - July 2016



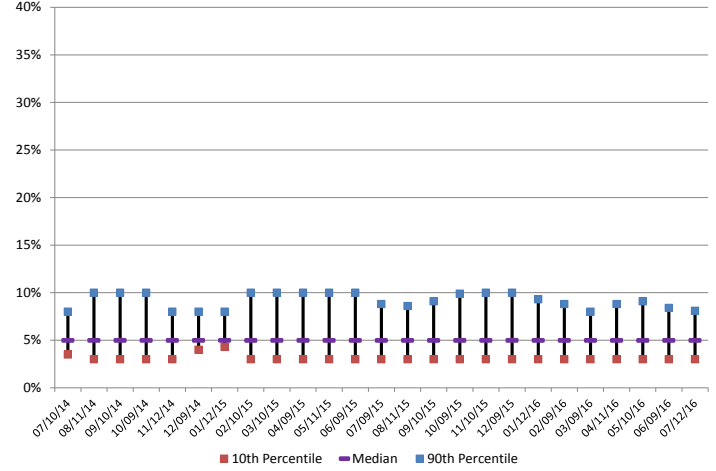
Investment Grade ABS Margins: July 2014 - July 2016



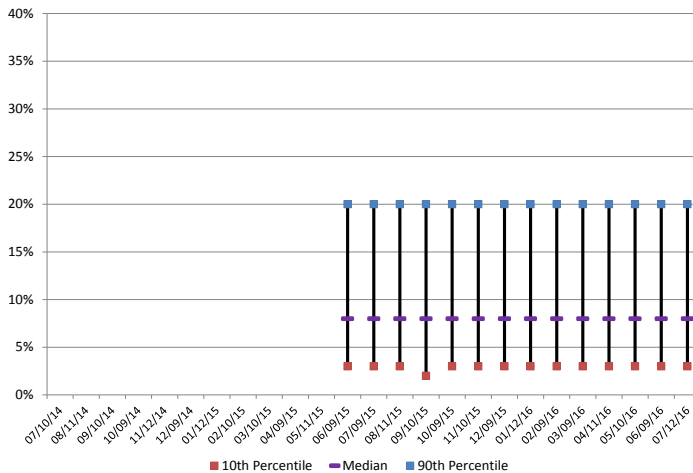
Non Investment Grade Corporates Margins: July 2014 - July 2016



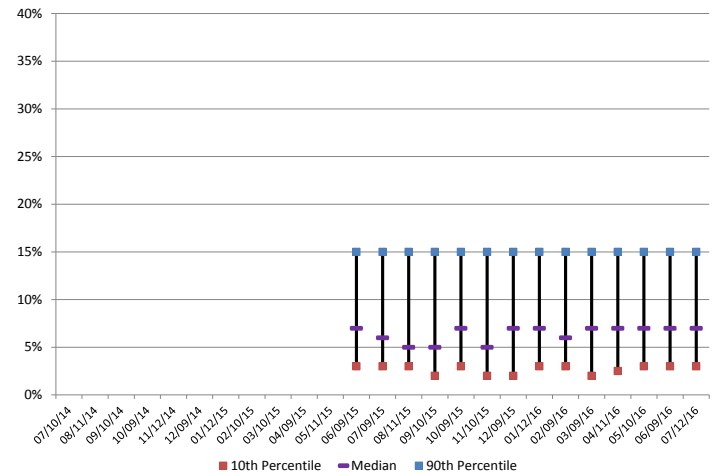
Investment Grade Corporates Margins: July 2014 - July 2016



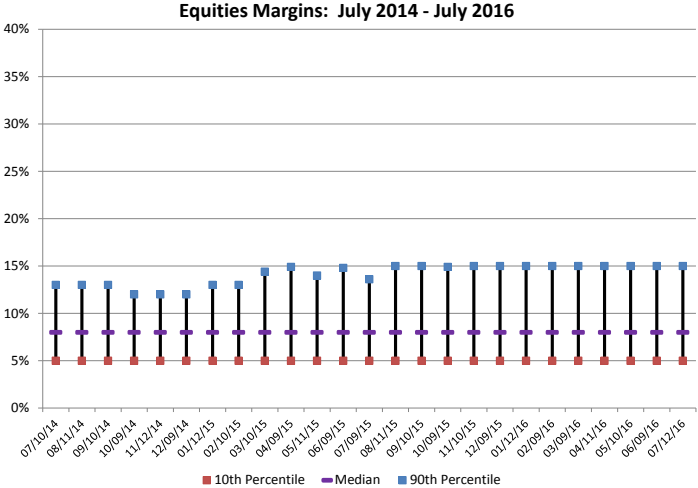
CMO Private Label Non Investment Grade Margins: July 2014 - July 2016*



CMO Private Label Investment Grade Margins: July 2014 - July 2016*



* A breakdown of CMO margin data between investment grade and non investment grade is not available prior to June 2015



Source: TPR Task Force, BNYM, JPMC