



Career Center of Puerto Rico, Inc.
Ayudando a Forjar Caminos

SONS OF BÉLGICA II

HIJOS DE BÉLGICA

ONE STOP CAREER CENTER OF PUERTO RICO (OSCC)

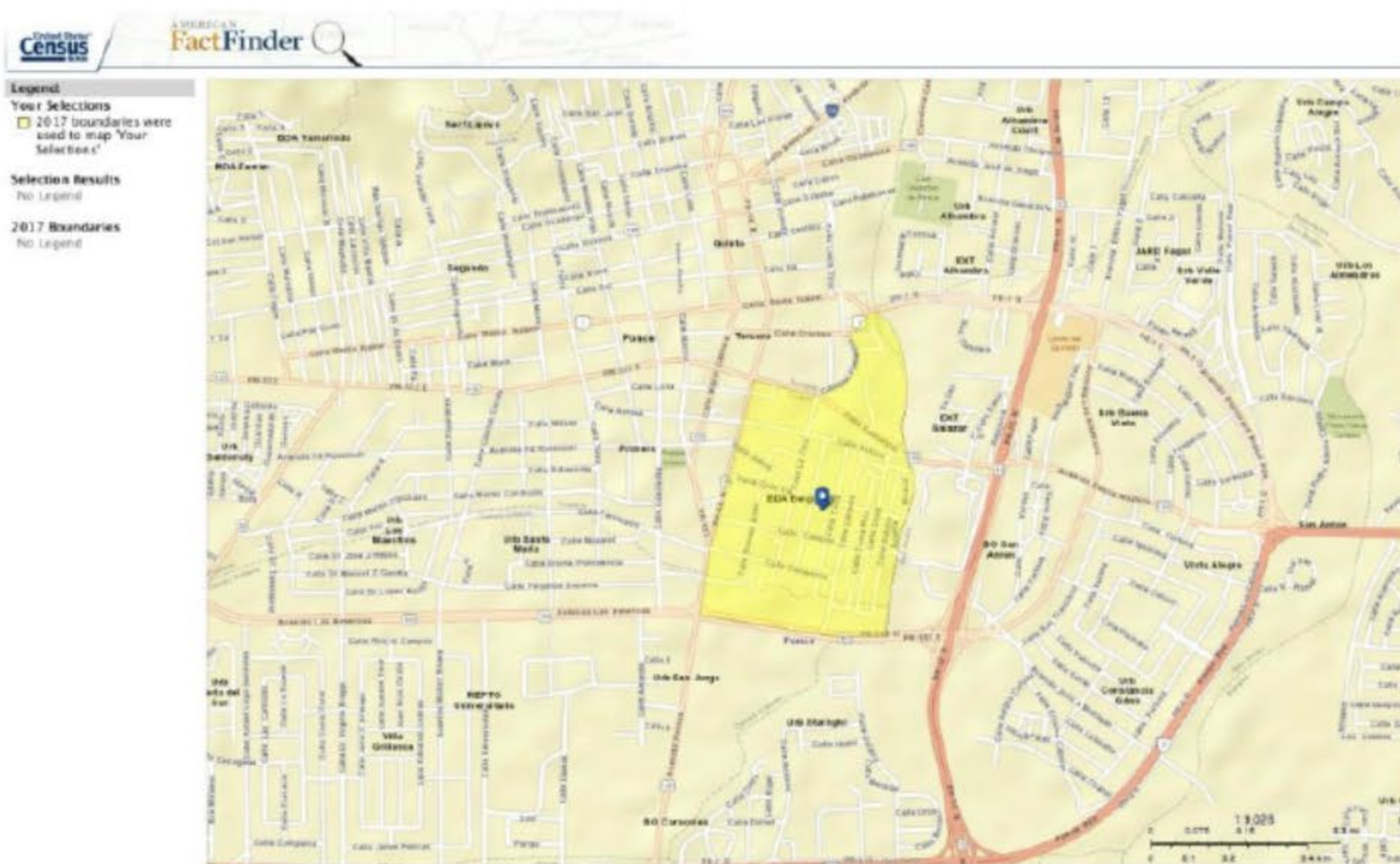
OSCC IS A PRIVATE NONPROFIT ORGANIZATION 501 (C) (3) WITH 19 YEARS OF EXPERIENCE PROVIDING THE NECESSARY SERVICES TO ENSURE THAT LOW-TO MODERATE INCOME HOUSEHOLDS, INDIVIDUALS (ESPECIALLY INCARCERATED AND FORMERLY INCARCERATED) FAMILIES AND COMMUNITIES (INCLUDING FEMALE HEAD OF HOUSE, ELDERLY, LAID-OFF WORKERS, UNEMPLOYED AND OTHER DISADVANTAGED POPULATIONS) HAVE THE TOOLS NEEDED TO IMPROVE THEIR QUALITY OF LIFE AND TO USE A PROACTIVE APPROACH TO CREATE AN ISLAND-WIDE COLLABORATIVE SERVICE NETWORK FOR THE COMMUNITIES OF GREATEST NEED AND BETTERMENT OF OUR SOCIETY.



OSCC ACCOMPLISHES ITS MISSION THROUGH WORKFORCE DEVELOPMENT, HOUSING, HEALTH AND EDUCATION PROGRAMS TO EMPOWER THE SOCIO ECONOMICALLY DISADVANTAGED POPULATIONS IN URBAN AND RURAL AREAS.

- TRANSITIONAL AND POST-INCARCERATION RE-ENTRY PROGRAM
- HOUSING COUNSELING AGENCY APPROVED BY HUD
- WORKFORCE DEVELOPMENT TRAINING AND JOB PLACEMENT PROGRAM
- COUNSELING AND LEGAL REPRESENTATION TO LOW INCOME 50 YEARS OF AGE OR OLDER WHO ARE FACING FORECLOSURE AND COMMUNITY REDEVELOPMENT
- COMMUNITY HOUSING DEVELOPMENT ORGANIZATION
- HIV CONTINUUM OF CARE MODEL - TRANSITIONAL CARE COORDINATION FOR HIV+/AIDS SOON TO BE RELEASE AND RELEASED RE-ENTRY CLIENTS





BÉLGICA COMMUNITY PONCE

Bélgica community (Census Tract 718) in Ponce is composed

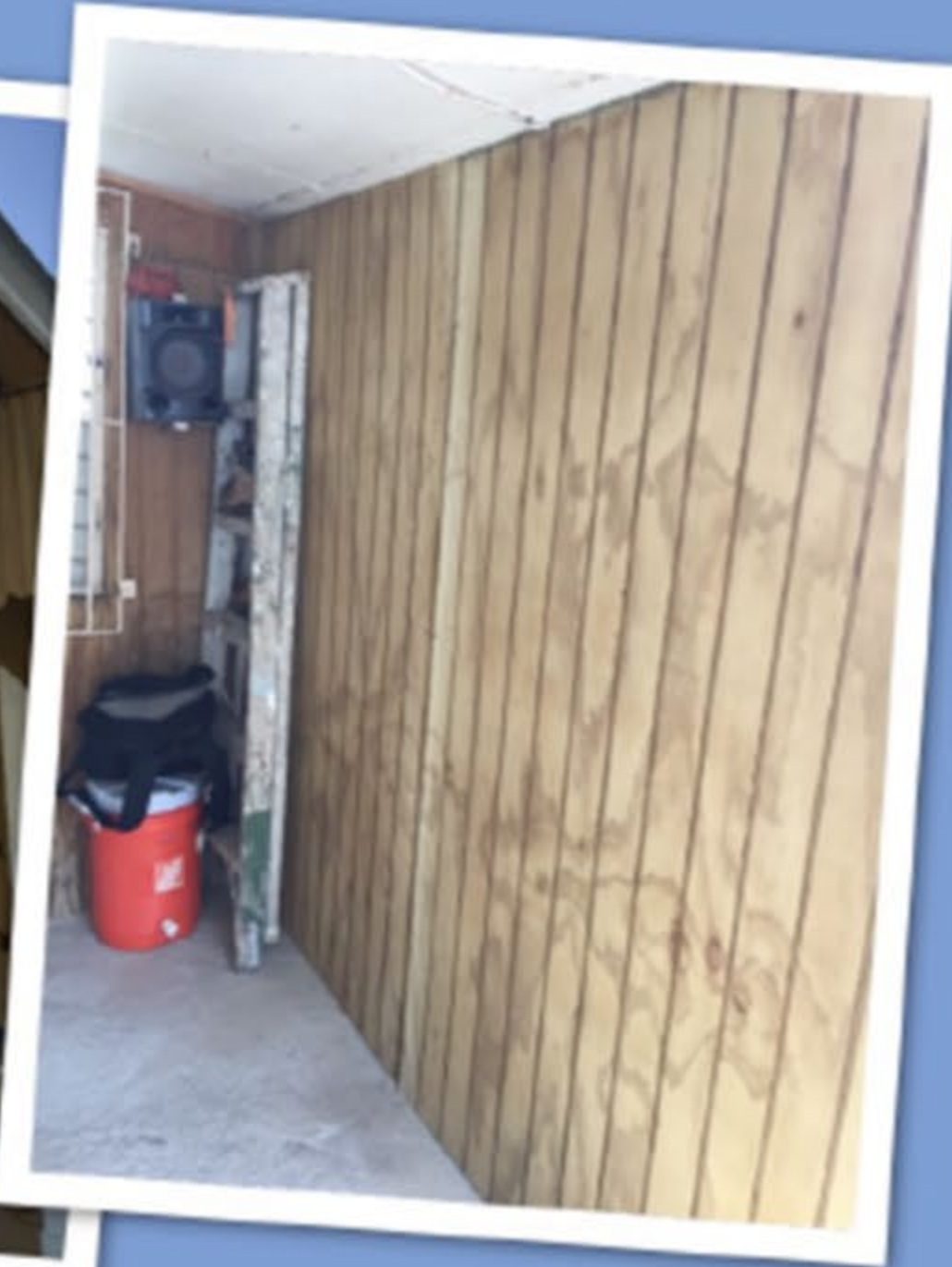
- 1,837 population (2013-2017 American Community Survey)
- 22.4% - 62 years or older,
- 65.8% below poverty level,
- 18.3% employment rate and
- 1,131 housing units
- 13.1% built 1939 or earlier.



hispanic**federation**

OSCC WILL MAKE REHABILITATION REPAIRS AND RECONSTRUCTION FOR HOMES THAT HAVE BEEN DAMAGED BY THE HURRICANE MARÍA IN BÉLGICA, PONCE IN COMPLIANCE WITH *INTERAGENCY STATEMENT ON CRA CONSIDERATION FOR COMMUNITY DEVELOPMENT ACTIVITIES IN THE U.S. VIRGIN ISLANDS AND PUERTO RICO*. FOR THE HOME REHABILITATION, OSCC WILL TARGET FAMILIES THAT HAVE THE GREATEST NEED ACCORDING TO HUD INCOME LIMITS 2018 AND DO NOT QUALIFY FOR ANOTHER PROGRAM ASSISTANCE.

OSCC'S JUSTICE INVOLVED PERSON WORKFORCE DEVELOPMENT PROGRAM PARTICIPANTS WITH EXPERIENCE WILL MAKE HOUSING REHABILITATION, WHICH WILL SERVE AS A SOURCE OF INCOME FOR THOSE WHOSE JOBS WERE DISPLACED.



EDWIN ROCHE

SONS OF BÉLGICA II WILL...

- REHABILITATE 15 HOUSING UNITS APPLYING PUERTO RICO BUILDING CODE 2018 IN BÉLGICA COMMUNITY IN PONCE.
- CREATE 8 JOBS OPPORTUNITIES FOR JUSTICE INVOLVED INDIVIDUALS FROM OSCC'S WORKFORCE DEVELOPMENT PROGRAM.
- PROVIDE CASE MANAGEMENT FOR RESIDENTS OF BELGICA COMMUNITY TO MEET THE NEEDS WHO UNDERSTAND REQUIRE ASSISTANCE.



SON OF BÉLGICA II FUND REQUEST

\$350,000 DONATION WILL COVER COSTS ASSOCIATED

- **\$122,000** - HOUSING REHABILITATION MATERIALS
- **\$183,000** - SALARY OF OSCC'S WORKFORCE DEVELOPMENT (JUSTICE INVOLVED PERSON PROGRAM) PARTICIPANTS
- **\$45,000** - ADMINISTRATIVE COSTS THAT INCLUDES: PROJECT MANAGER (ARCHITECT) , PERMITS, STUDIES, PLANS, COSTS OF OFFICIAL SEALS AND REQUIRED DOCUMENTATION FOR SONS OF BÉLGICA II INVESTMENT CONNECTION PROGRAM AND INSURANCE REQUIREMENTS FOR THE PROJECT.