

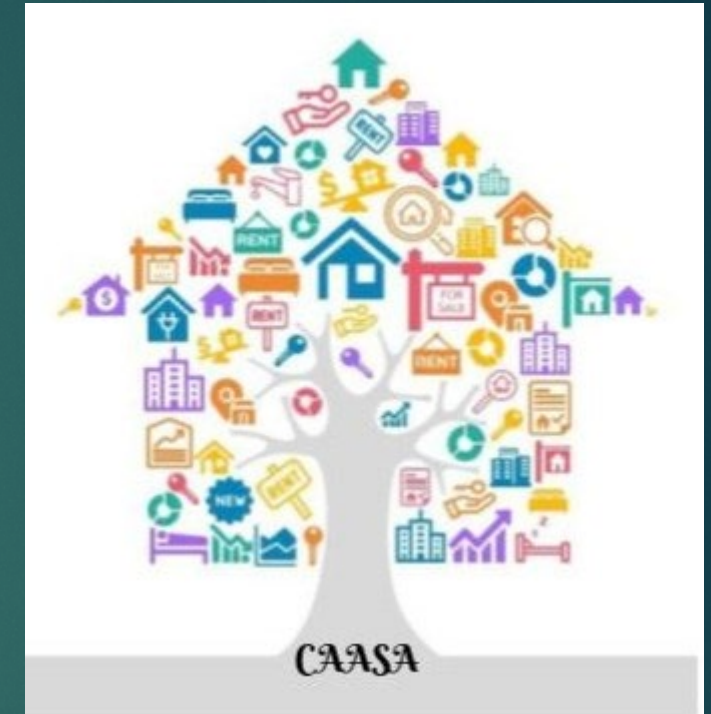
## PROPOSED PROJECT



**PONCE  
NEIGHBORHOOD  
HOUSING SERVICES  
INC.**

**CENTRO de  
ADQUISICIÓN y  
APOYO  
SOCIECONÓMICO en  
ACCIÓN**

**CAASA**



Elizabeth Colón Rivera, MPA  
Executive Director

# BACKGROUND

## MISSION

STRENGTHEN COMMUNITIES IN  
PR THROUGH HOUSING  
DEVELOPMENT, COMMUNITY,  
FINANCIAL AND SOCIAL  
EDUCATION

## GEOGRAPHY SERVED



## SERVICES





# THE PROPOSAL

## POPULATION

- Families with housing needs
- Families with foreclosure risk
- Community with disadvantages issues
- Individuals in need of entrepreneurship and business education

## CAASA

- Offices spaces
- Workshops and coaching classroom
- Panic room/ food and supplies storage area
- Incubators, business accelerators and non profit initiative development
- Parking



# OUR IMPACT

## Financial Capability

- 166 families improved they financial health

## Community and Economic Development

- 1,330 individuals received C&ED services and support.

## Income Levels (AMI)

- <30 % - 109
- 30%-49% - 102
- 50%-79% - 196
- 80%-100% - 115
- >100% - 171

## Foreclosure

90,000 families with delinquency (The Black Night Financial Services, 2018)

113 families prevented foreclosure with the assistances of Ponce NHS

## First Time Homebuyer

1,225 families renters households (HUD, 2017)

693 families received housing counseling services



# ACTUAL LIMITATIONS



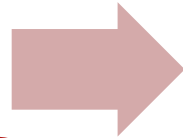
- Lack of space
- Lack of parking
- Lack of storage space
- Structure was damaged by earthquakes



# ACTION

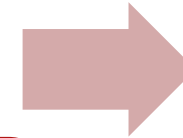
## Phase 1

- Closed the acquisition spaces around the office



## Phase 2

- Construction permits
- New facilities construction



## Phase 3

- Furnish the facilities

Original Investment: \$150,000  
Adjusted Investment: \$2.5 millions