

# NOWCASTING REPORT

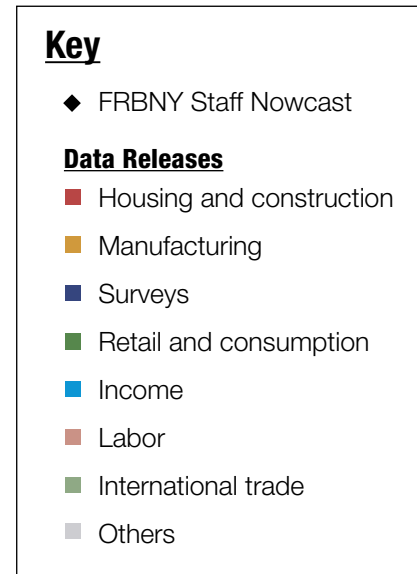
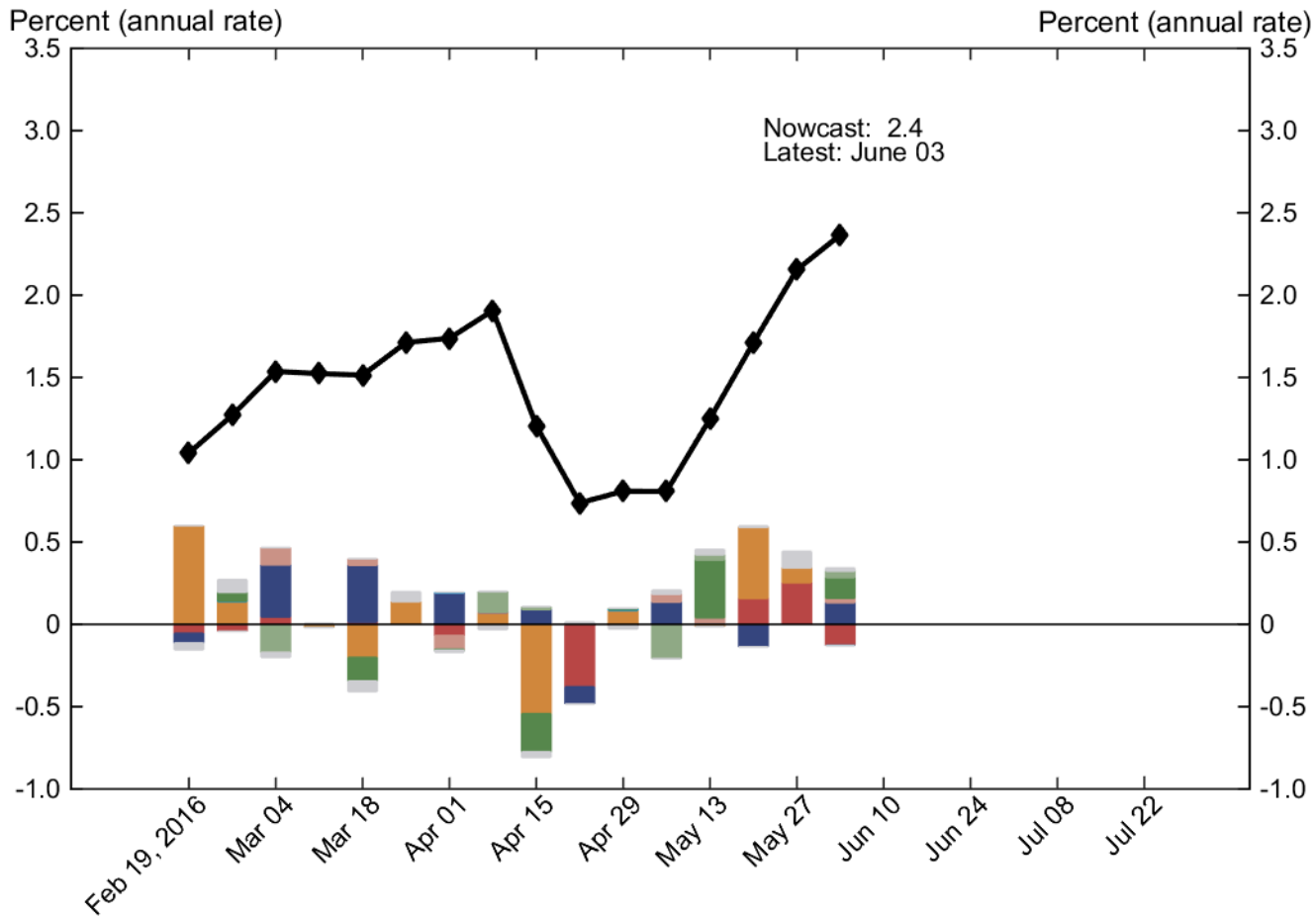
Updated: June 3, 2016

- The FRBNY Staff Nowcast is above 2% for both 2016:Q2 and 2016:Q3.
- Conflicting news over the week had on net a slightly positive effect on the nowcast.
- The largest positive contributions came from real personal consumption expenditures and the ISM manufacturing release.

---

The FRBNY Staff Nowcast is not an official forecast of the Federal Reserve Bank of New York, its president, the Federal Reserve System, or the Federal Open Market Committee (FOMC). While we are precluded from publishing our estimates during blackouts surrounding FOMC meetings, we continue to update our model internally and share the analysis in the next Nowcasting Report.

# 1 | 2016:Q2 GDP Growth



Source: Authors' calculations.

Notes: Colored bars reflect the relative impact of each data release on the nowcast.

# 1.1 | Nowcast Detail

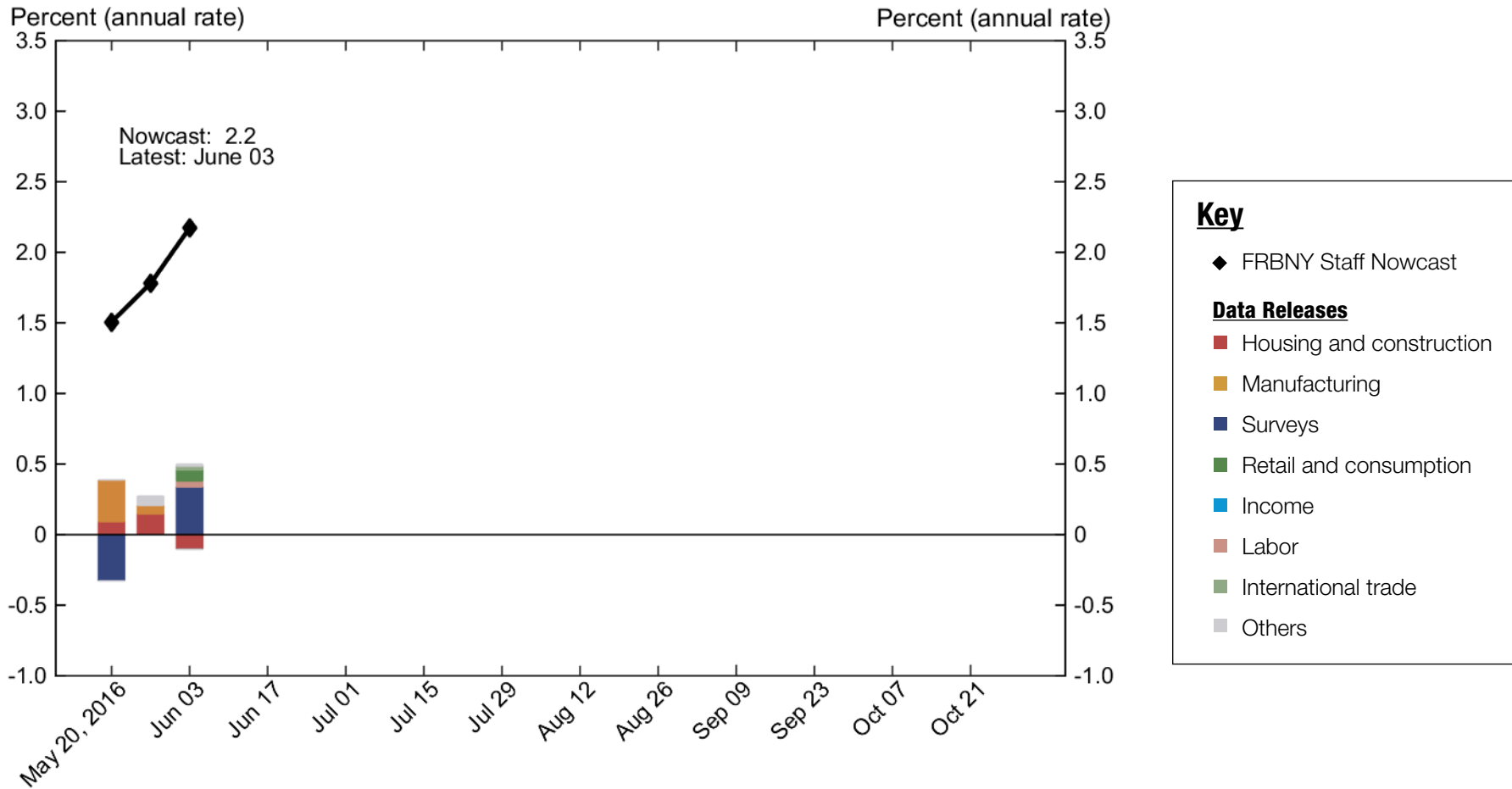
■ Housing and construction 
 ■ Manufacturing 
 ■ Surveys 
 ■ Retail and consumption 
 ■ Income 
 ■ Labor 
 ■ International trade 
 ■ Others

| Update | Release Date  | Data Series  | Reference Period | Units                  | Forecast | Actual | Weight  | Impact      | Nowcast GDP Growth |
|--------|---|--|------------------|------------------------|----------|--------|---------|-------------|--------------------|
|        |   |  |                  |                        | [a]      | [b]    | [c]     | [c(b - a)]  |                    |
| May 06 | 10:00 AM May 10                                       | <span style="color: #C00000;">■</span> JOLTS: Job openings: Total                            | Mar              | Level chg. (thousands) | -41.8    | 149.0  | 0.209*  | 0.040       | <b>0.81</b>        |
|        | 10:00 AM May 10                                       | <span style="color: #D4AF37;">■</span> Merchant wholesalers: Inventories: Total              | Mar              | MoM % chg.             | 0.344    | 0.119  | -0.160  | 0.036       |                    |
|        | 8:30 AM May 12  | <span style="color: #008000;">■</span> Import price index                                    | Apr              | MoM % chg.             | 0.193    | 0.340  | 0.030   | 0.004       |                    |
|        | 8:30 AM May 12  | <span style="color: #008000;">■</span> Export price index                                    | Apr              | MoM % chg.             | 0.014    | 0.508  | 0.055   | 0.027       |                    |
|        | 8:30 AM May 13  | <span style="color: #008000;">■</span> Retail sales and food services                        | Apr              | MoM % chg.             | 0.128    | 1.26   | 0.311   | 0.351       |                    |
|        | 8:30 AM May 13  | <span style="color: #A9A9A9;">■</span> PPI: Final demand                                     | Apr              | MoM % chg.             | 0.053    | 0.183  | 0.043   | 0.006       |                    |
|        | 10:00 AM May 13                                       | <span style="color: #D4AF37;">■</span> Inventories: Total business                           | Mar              | MoM % chg.             | 0.158    | 0.443  | -0.174  | -0.050      |                    |
|        |   | <span style="color: #A9A9A9;">■</span> Data revisions  |                  |                        |          |        |         | 0.026       |                    |
| May 13 | 8:30 AM May 16  | <span style="color: #000080;">■</span> Empire State Mfg. Survey: General business conditions | May              | Index                  | 8.10     | -9.02  | 0.008   | -0.143      | <b>1.25</b>        |
|        | 8:30 AM May 17  | <span style="color: #A9A9A9;">■</span> CPI-U: All items                                      | Apr              | MoM % chg.             | 0.129    | 0.408  | 0.058   | 0.016       |                    |
|        | 8:30 AM May 17  | <span style="color: #C00000;">■</span> Housing starts  | Apr              | MoM % chg.             | 2.87     | 6.64   | 0.027   | 0.104       |                    |
|        | 8:30 AM May 17  | <span style="color: #A9A9A9;">■</span> CPI-U: All items less food and energy                 | Apr              | MoM % chg.             | 0.136    | 0.195  | 0.018   | 0.001       |                    |
|        | 8:30 AM May 17  | <span style="color: #C00000;">■</span> Building permits                                      | Apr              | Level chg. (thousands) | 18.4     | 39.0   | 0.003   | 0.054       |                    |
|        | 9:10 AM May 17  | <span style="color: #D4AF37;">■</span> Industrial production index                           | Apr              | MoM % chg.             | 0.104    | 0.655  | 0.369   | 0.203       |                    |
|        | 9:10 AM May 17  | <span style="color: #D4AF37;">■</span> Capacity utilization                                  | Apr              | Ppt. chg.              | -0.017   | 0.479  | 0.460   | 0.228       |                    |
|        | 8:30 AM May 19  | <span style="color: #000080;">■</span> Philly Fed Mfg. business outlook: Current activity    | May              | Index                  | -2.78    | -1.80  | 0.006   | 0.006       |                    |
|        | <span style="color: #A9A9A9;">■</span> Data revisions |  |                  |                        |          |        | -0.008  |             |                    |
| May 19 | 10:00 AM May 24                                       | <span style="color: #C00000;">■</span> New single family houses sold                         | Apr              | MoM % chg.             | 0.728    | 16.6   | 0.016   | 0.254       | <b>1.71</b>        |
|        | 8:30 AM May 26  | <span style="color: #D4AF37;">■</span> Manufacturers' new orders: Durable goods              | Apr              | MoM % chg.             | -0.103   | 3.36   | 0.029   | 0.099       |                    |
|        | 8:30 AM May 26  | <span style="color: #D4AF37;">■</span> Manufacturers' shipments: Durable goods               | Apr              | MoM % chg.             | 0.671    | 0.639  | 0.126   | -0.004      |                    |
|        | 8:30 AM May 26  | <span style="color: #D4AF37;">■</span> Mfrs.' unfilled orders: All manufacturing industries  | Apr              | MoM % chg.             | 0.132    | 0.559  | -0.026  | -0.011      |                    |
|        | 8:30 AM May 26  | <span style="color: #D4AF37;">■</span> Manufacturers' inventories: Durable goods             | Apr              | MoM % chg.             | -0.166   | -0.179 | -0.454  | 0.006       |                    |
|        | 8:30 AM May 27  | <span style="color: #A9A9A9;">■</span> Real gross domestic income                            | Q1               | QoQ % chg. AR          | 0.917    | 2.21   | 0.020   | 0.026       |                    |
|        |   | <span style="color: #A9A9A9;">■</span> Data revisions  |                  |                        |          |        |         | 0.074       |                    |
| May 27 | 8:30 AM May 31  | <span style="color: #00B0F0;">■</span> Real disposable personal income                       | Apr              | MoM % chg.             | 0.227    | 0.153  | 0.034   | -0.003      | <b>2.15</b>        |
|        | 8:30 AM May 31  | <span style="color: #A9A9A9;">■</span> PCE less food and energy: Chain price index           | Apr              | MoM % chg.             | 0.148    | 0.171  | 0.107   | 0.002       |                    |
|        | 8:30 AM May 31  | <span style="color: #A9A9A9;">■</span> PCE: Chain price index                                | Apr              | MoM % chg.             | 0.117    | 0.307  | 0.099   | 0.019       |                    |
|        | 8:40 AM May 31  | <span style="color: #008000;">■</span> Real personal consumption expenditures                | Apr              | MoM % chg.             | 0.321    | 0.643  | 0.386   | 0.124       |                    |
|        | 10:00 AM Jun 01                                       | <span style="color: #000080;">■</span> ISM mfg.: Pmi composite index                         | May              | Index                  | 49.8     | 51.3   | 0.049   | 0.076       |                    |
|        | 10:00 AM Jun 01                                       | <span style="color: #000080;">■</span> ISM mfg.: Prices index                                | May              | Index                  | 57.8     | 63.5   | 0.008   | 0.046       |                    |
|        | 10:00 AM Jun 01                                       | <span style="color: #C00000;">■</span> Value of construction put in place                    | Apr              | MoM % chg.             | 0.889    | -1.83  | 0.047   | -0.128      |                    |
|        | 10:00 AM Jun 01                                       | <span style="color: #000080;">■</span> ISM mfg.: Employment index                            | May              | Index                  | 47.9     | 49.2   | 0.018   | 0.024       |                    |
|        | 8:05 AM Jun 02  | <span style="color: #A52A2A;">■</span> ADP nonfarm private payroll employment                | May              | Level chg. (thousands) | 162.9    | 173.0  | -0.782* | -0.008      |                    |
|        | 8:30 AM Jun 03  | <span style="color: #A52A2A;">■</span> All employees: Total nonfarm                          | May              | Level chg. (thousands) | 103.4    | 38.0   | 0.156*  | -0.010      |                    |
|        | 8:30 AM Jun 03  | <span style="color: #A52A2A;">■</span> Civilian unemployment rate                            | May              | Ppt. chg.              | 0.010    | -0.300 | -0.150  | 0.047       |                    |
|        | 8:30 AM Jun 03  | <span style="color: #008000;">■</span> Exports: Goods and services                           | Apr              | MoM % chg.             | 0.944    | 1.46   | 0.081   | 0.042       |                    |
|        | 8:30 AM Jun 03  | <span style="color: #008000;">■</span> Imports: Goods and services                           | Apr              | MoM % chg.             | 2.12     | 2.10   | 0.059   | -0.002      |                    |
|        | 10:00 AM Jun 03                                       | <span style="color: #000080;">■</span> ISM nonmanufacturing: NMI composite index             | May              | Index                  | 54.8     | 52.9   | 0.007   | -0.014      |                    |
|        |   | <span style="color: #A9A9A9;">■</span> Data revisions  |                  |                        |          |        |         | -0.004      |                    |
| Jun 03 |   |  |                  |                        |          |        |         | <b>2.37</b> |                    |

Source: Authors' calculations.

Notes: MoM % chg. indicates month over month percentage change. QoQ % chg. indicates quarter over quarter percentage change. The weights with the asterisk are multiplied by 1,000 for legibility.

## 2 | 2016:Q3 GDP Growth



Source: Authors' calculations.

Note: Colored bars reflect the impact of each data release on the nowcast.

## 2.1 | Nowcast Detail

■ Housing and construction 
 ■ Manufacturing 
 ■ Surveys 
 ■ Retail and consumption 
 ■ Income 
 ■ Labor 
 ■ International trade 
 ■ Others

| Update | Release Date    | Data Series   | Reference Period | Units                  | Forecast | Actual | Weight  | Impact      | Nowcast GDP Growth |
|--------|-----------------|---|------------------|------------------------|----------|--------|---------|-------------|--------------------|
|        |                 |   |                  |                        | [a]      | [b]    | [c]     | [c(b - a)]  |                    |
| May 13 | 8:30 AM May 16  | ■ Empire State Mfg. Survey: General business conditions | May              | Index                  | 8.10     | -9.02  | 0.020   | -0.345      | <b>1.45</b>        |
|        | 8:30 AM May 17  | ■ CPI-U: All items                                      | Apr              | MoM % chg.             | 0.129    | 0.408  | 0.071   | 0.020       |                    |
|        | 8:30 AM May 17  | ■ Housing starts  | Apr              | MoM % chg.             | 2.87     | 6.64   | 0.016   | 0.060       |                    |
|        | 8:30 AM May 17  | ■ CPI-U: All items less food and energy                 | Apr              | MoM % chg.             | 0.136    | 0.195  | 0.022   | 0.001       |                    |
|        | 8:30 AM May 17  | ■ Building permits                                      | Apr              | Level chg. (thousands) | 18.4     | 39.0   | 0.002   | 0.032       |                    |
|        | 9:10 AM May 17  | ■ Industrial production index                           | Apr              | MoM % chg.             | 0.104    | 0.655  | 0.252   | 0.139       |                    |
|        | 9:10 AM May 17  | ■ Capacity utilization                                  | Apr              | Ppt. chg.              | -0.017   | 0.479  | 0.315   | 0.157       |                    |
|        | 8:30 AM May 19  | ■ Philly Fed Mfg. business outlook: Current activity    | May              | Index                  | -2.78    | -1.80  | 0.018   | 0.017       |                    |
|        |                 | ■ Data revisions  |                  |                        |          |        | -0.020  |             |                    |
| May 19 | 10:00 AM May 24 | ■ New single family houses sold                         | Apr              | MoM % chg.             | 0.728    | 16.6   | 0.009   | 0.147       | <b>1.51</b>        |
|        | 8:30 AM May 26  | ■ Manufacturers' new orders: Durable goods              | Apr              | MoM % chg.             | -0.103   | 3.36   | 0.018   | 0.063       |                    |
|        | 8:30 AM May 26  | ■ Manufacturers' shipments: Durable goods               | Apr              | MoM % chg.             | 0.671    | 0.639  | 0.082   | -0.003      |                    |
|        | 8:30 AM May 26  | ■ Mfrs.' unfilled orders: All manufacturing industries  | Apr              | MoM % chg.             | 0.132    | 0.559  | -0.005  | -0.002      |                    |
|        | 8:30 AM May 26  | ■ Manufacturers' inventories: Durable goods             | Apr              | MoM % chg.             | -0.166   | -0.179 | -0.220  | 0.003       |                    |
|        | 8:30 AM May 27  | ■ Real gross domestic income                            | Q1               | QoQ % chg. AR          | 0.917    | 2.21   | 0.001   | 0.002       |                    |
|        |                 |   | ■ Data revisions |                        |          |        |         | 0.063       |                    |
| May 27 | 8:30 AM May 31  | ■ Real disposable personal income                       | Apr              | MoM % chg.             | 0.227    | 0.153  | 0.021   | -0.002      | <b>1.78</b>        |
|        | 8:30 AM May 31  | ■ PCE less food and energy: Chain price index           | Apr              | MoM % chg.             | 0.148    | 0.171  | 0.113   | 0.003       |                    |
|        | 8:30 AM May 31  | ■ PCE: Chain price index                                | Apr              | MoM % chg.             | 0.117    | 0.307  | 0.115   | 0.022       |                    |
|        | 8:40 AM May 31  | ■ Real personal consumption expenditures                | Apr              | MoM % chg.             | 0.321    | 0.643  | 0.239   | 0.077       |                    |
|        | 10:00 AM Jun 01 | ■ ISM mfg.: Pmi composite index                         | May              | Index                  | 49.8     | 51.3   | 0.120   | 0.185       |                    |
|        | 10:00 AM Jun 01 | ■ ISM mfg.: Prices index                                | May              | Index                  | 57.8     | 63.5   | 0.022   | 0.128       |                    |
|        | 10:00 AM Jun 01 | ■ Value of construction put in place                    | Apr              | MoM % chg.             | 0.889    | -1.83  | 0.038   | -0.104      |                    |
|        | 10:00 AM Jun 01 | ■ ISM mfg.: Employment index                            | May              | Index                  | 47.9     | 49.2   | 0.049   | 0.063       |                    |
|        | 8:05 AM Jun 02  | ■ ADP nonfarm private payroll employment                | May              | Level chg. (thousands) | 162.9    | 173.0  | -1.148* | -0.012      |                    |
|        | 8:30 AM Jun 03  | ■ All employees: Total nonfarm                          | May              | Level chg. (thousands) | 103.4    | 38.0   | 0.377*  | -0.025      |                    |
|        | 8:30 AM Jun 03  | ■ Civilian unemployment rate                            | May              | Ppt. chg.              | 0.010    | -0.300 | -0.256  | 0.079       |                    |
|        | 8:30 AM Jun 03  | ■ Exports: Goods and services                           | Apr              | MoM % chg.             | 0.944    | 1.46   | 0.056   | 0.029       |                    |
|        | 8:30 AM Jun 03  | ■ Imports: Goods and services                           | Apr              | MoM % chg.             | 2.12     | 2.10   | 0.040   | -0.001      |                    |
|        | 10:00 AM Jun 03 | ■ ISM nonmanufacturing: NMI composite index             | May              | Index                  | 54.8     | 52.9   | 0.020   | -0.038      |                    |
|        |                 |   | ■ Data revisions |                        |          |        |         | -0.011      |                    |
| Jun 03 |                 |   |                  |                        |          |        |         | <b>2.17</b> |                    |

Source: Authors' calculations.

Notes: MoM % chg. indicates month over month percentage change. QoQ % chg. indicates quarter over quarter percentage change. The weights with the asterisk are multiplied by 1,000 for legibility.

# Nowcasting Report Q&A

## 1. What is the ultimate goal of the exercise?

Our model produces a “nowcast” of GDP growth, incorporating a wide range of macroeconomic data as it becomes available. With this approach, we aim to read the real-time flow of information and evaluate its effects on current economic conditions. The platform provides a model-based counterpart to the more routine analysis at the bank, which has traditionally been based on expert knowledge.

## 2. What is the modeling strategy?

The platform employs Kalman-filtering techniques and a dynamic factor model. The approach has a number of desirable features. It is based on:

- a reliable big data framework that captures in a parsimonious way the salient features of macroeconomic data dynamics;
- a design that digests the data as “news,” mimicking the way markets work.

## 3. What are the input data? What has been driving the data selection?

We include all the market-moving indicators—the same data that are also constantly monitored by market participants and commentators.

## 4. Why should we trust the model?

Extensive back-testing of the model, research, and practical experience have shown that the platform is able to approximate best practices in macroeconomic forecasts. The model produces forecasts that are as accurate as, and strongly correlated with, predictions based on best judgment.

The methodology has been tested for accuracy in many countries, including large developed economies (the Euro area, Italy, France,

Germany, Spain, the United Kingdom, Japan, and Canada), small open economies (Australia, Ireland, Belgium, New Zealand, the Czech Republic, and Scotland), fast-growing economies (Brazil, Russia, India, China, and South Africa), and developing economies (Mexico, Indonesia, and Argentina).

## 5. How should we read the output of the model?

- The model produces forecasts for all variables taking into account their dynamic interactions.
- Since it is a fully specified dynamic model, the platform provides an intuitive reading of the incoming data as “news.”
- The difference between two consecutive forecasts (that is, the forecast revision) is the weighted average of the news during the week.
- News is defined as the difference between released data and model predictions. The weights account for the information content as well as the timeliness of the data releases.
- The contribution of new data to the forecast revision is reported in the two charts with colored bars. To make the charts easier to read, we grouped variables in a few broad categories. Detailed information about the composition of the groupings is provided in the accompanying tables.

## References

- *Banbura, M., D. Giannone, M. Modugno, and L. Reichlin.* 2013. “Nowcasting and the Real-Time Data Flow.” In G. Elliott and A. Timmermann, eds., *Handbook of Economic Forecasting*, Vol. 2. Amsterdam: Elsevier-North Holland.
- *Giannone, D., L. Reichlin, and D. Small.* 2008. “Nowcasting: The Real-Time Informational Content of Macroeconomic Data”, *Journal of Monetary Economics* 55, no.4 (May): 665-76.

## **Nowcasting Report FAQs**

### **1. For how long you report a quarter?**

We start reporting the nowcast of GDP growth for a reference quarter about one month before the quarter begins; we stop updating it about one month after the quarter closes.

Precise dates are related to the Commerce Department's schedule for the release of official GDP estimates. For example, we began reporting 2016:Q1 on November 20, 2015, just after the government released the second GDP estimate for 2016:Q3. We stopped updating the nowcast for 2016:Q1 on April 28, 2016, with the release of the advance GDP estimate for the reference quarter. We continued reporting 2016:Q1 until the second GDP estimate for the quarter became available. At that point, we started computing the nowcasts for 2016:Q3.

### **2. What are the major conceptual differences between the FRBNY Staff Nowcast and the Atlanta Fed's Nowcast?**

The FRBNY Staff Nowcast and the Atlanta Fed's GDPNow are both based on statistical filtering techniques applied to a dynamic factor model. These techniques are very common in big data analytics since they effectively

summarize the information contained in large data sets through a small number of common factors. The general framework for macroeconomic nowcasting has been developed in the academic literature over the past ten years, as discussed in the Q&A included in this report. The FRBNY Staff Nowcast is a straightforward application of the most advanced techniques developed in this academic literature. GDPNow adapts these techniques to mimic the methods used by the BEA to estimate real GDP growth, as well explained by GDPNow's own FAQs.

Because GDPNow and the FRBNY Staff Nowcast are different models, they can generate different forecasts of real GDP growth. Our policy is not to comment on or interpret any differences between the forecasts of these two models.

### **3. Is the "annual rate" the y/y growth rate?**

No. We track the annualized quarterly ("q/q") growth rate of GDP, not the four quarters ("y/y") growth rate.

### **Authors**

FRBNY Time-Series Analysis Team