

NOWCASTING REPORT

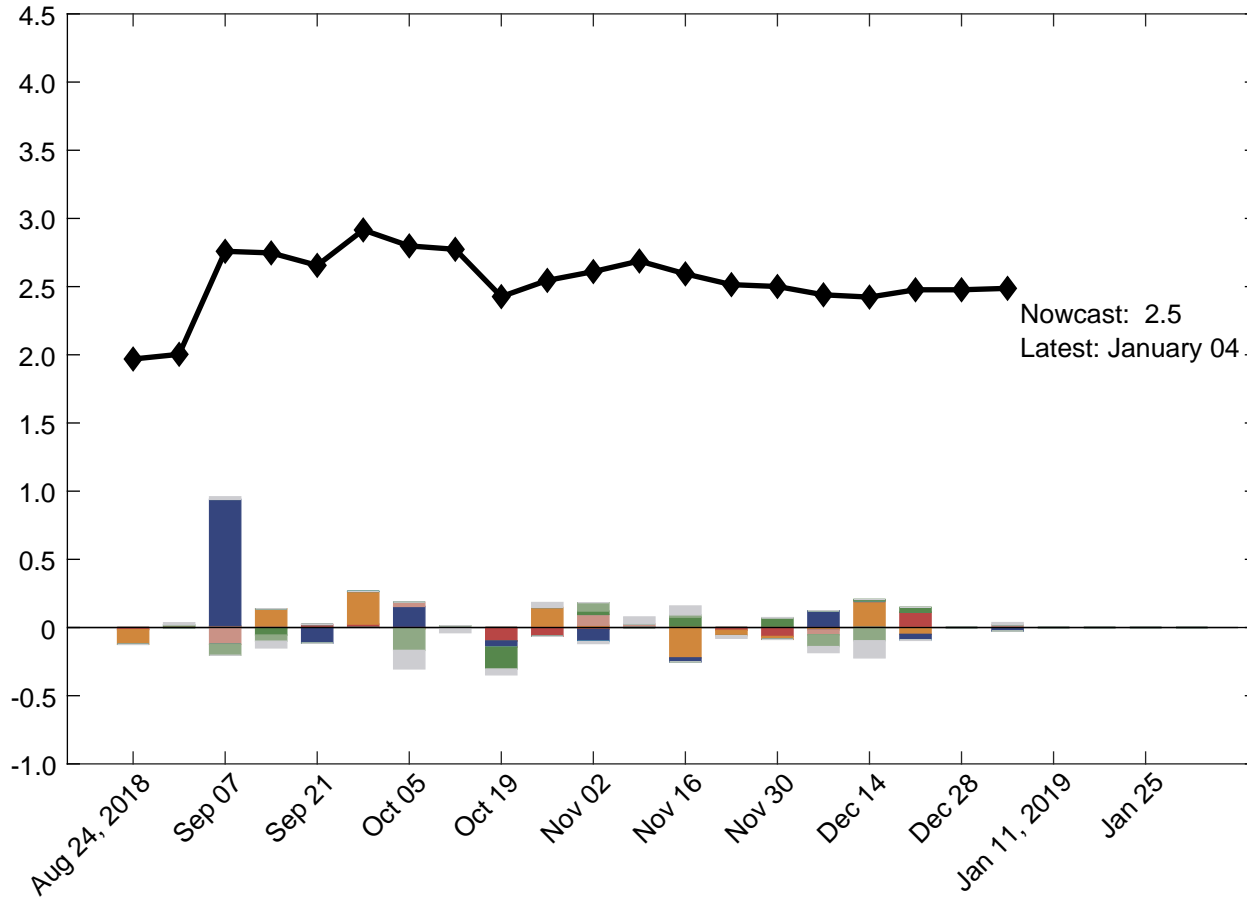
Updated: January 4, 2019

- The New York Fed Staff Nowcast stands at 2.5% for 2018:Q4 and 2.1% for 2019:Q1.
- News from this week's data releases left the nowcast for both quarters broadly unchanged.
- Positive surprises from employment data roughly offset negative surprises from the ISM manufacturing survey.

The New York Fed Staff Nowcast is not an official forecast of the Federal Reserve Bank of New York, its president, the Federal Reserve System, or the Federal Open Market Committee (FOMC).

1 | 2018:Q4 GDP Growth

Percent (annual rate)



Key

- ◆ New York Fed Staff Nowcast

Data Releases

- Housing and construction
- Manufacturing
- Surveys
- Retail and consumption
- Income
- Labor
- International trade
- Others

Source: Authors' calculations, based on data accessed through Haver Analytics.

Note: Colored bars reflect the impact of each data release on the nowcast.

1.1 | Nowcast Detail

■ Housing and construction
 ■ Manufacturing
 ■ Surveys
 ■ Retail and consumption
 ■ Income
 ■ Labor
 ■ International trade
 ■ Others

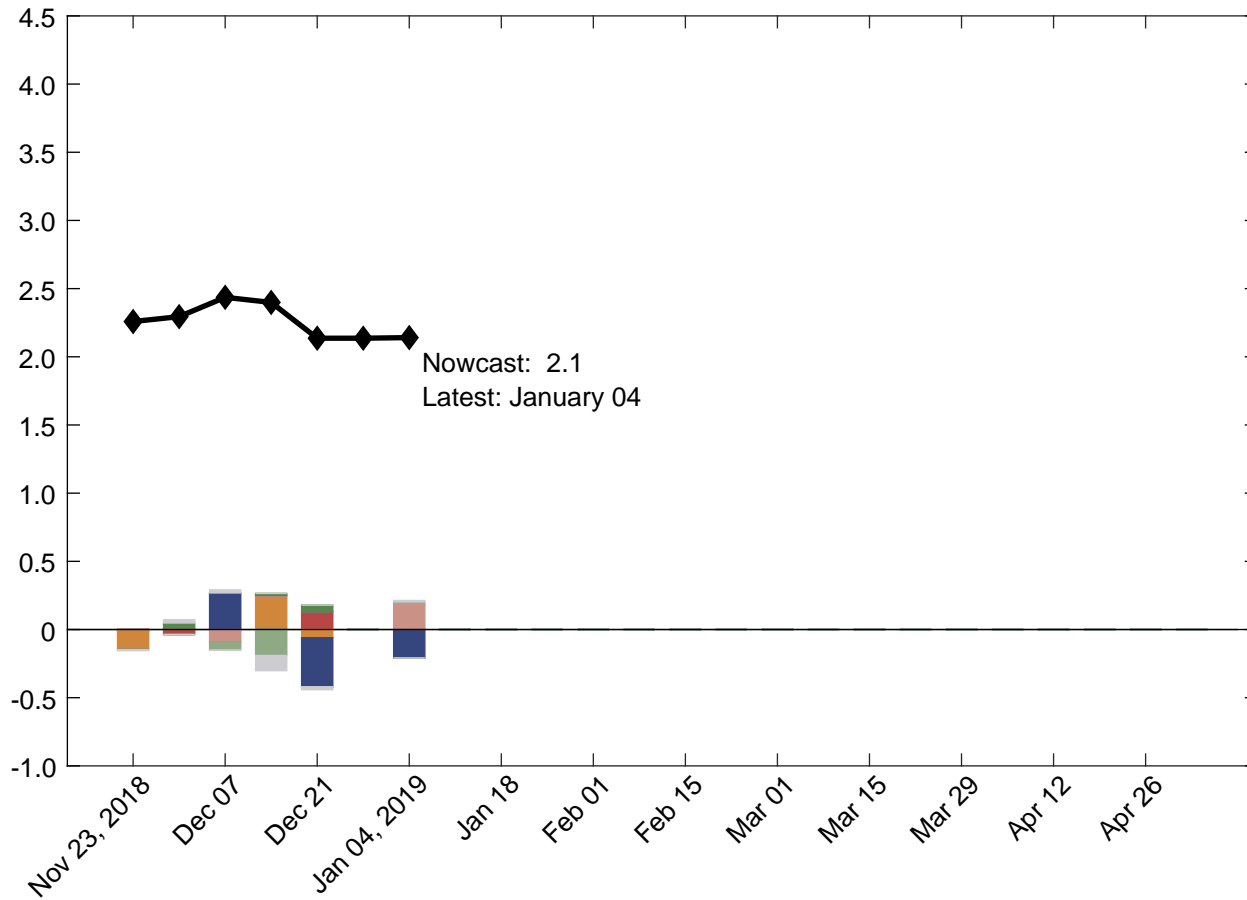
Update	Release Date	Data Series	Reference Period	Units	Forecast	Actual	Weight	Impact	Nowcast GDP Growth	
					[a]	[b]	[c]	[c(b - a)]		
Nov 30	10:00 AM Dec 03	ISM mfg.: PMI composite index	Nov	Index	57.0	59.3	0.049	0.111	2.50	
	10:00 AM Dec 03	ISM mfg.: Prices index	Nov	Index	69.6	60.7	0.008	-0.069		
	10:00 AM Dec 03	Value of construction put in place	Oct	MoM % chg.	0.203	-0.149	0.024	-0.009		
	10:00 AM Dec 03	ISM mfg.: Employment index	Nov	Index	55.7	58.4	0.027	0.073		
	8:05 AM Dec 06	ADP nonfarm private payroll employment	Nov	Level chg. (thousands)	205.7	179.0	0.543*	-0.014		
	8:30 AM Dec 06	Exports: Goods and services	Oct	MoM % chg.	0.743	-0.148	0.073	-0.065		
	8:30 AM Dec 06	Imports: Goods and services	Oct	MoM % chg.	0.618	0.234	0.056	-0.022		
	10:00 AM Dec 06	ISM nonmanufacturing: NMI composite index	Nov	Index	59.8	60.7	0.007	0.007		
	10:00 AM Dec 06	Inventories: Total business	Oct	MoM % chg.	0.467	0.558	-0.099	-0.009		
	8:30 AM Dec 07	All employees: Total nonfarm	Nov	Level chg. (thousands)	199.2	155.0	0.316*	-0.014		
	8:30 AM Dec 07	Civilian unemployment rate	Nov	Ppt. chg.	-0.071	0.000	-0.106	-0.007		
			Data revisions							-0.044
	Dec 07	10:00 AM Dec 10	JOLTS: Job openings: Total	Oct	Level chg. (thousands)	203.4	119.0	-0.061*		0.005
8:30 AM Dec 11		PPI: Final demand	Nov	MoM % chg.	0.241	0.085	0.105	-0.016		
8:40 AM Dec 12		CPI-U: All items	Nov	MoM % chg.	0.263	0.019	0.084	-0.021		
8:40 AM Dec 12		CPI-U: All items less food and energy	Nov	MoM % chg.	0.173	0.209	0.099	0.004		
8:30 AM Dec 13		Export price index	Nov	MoM % chg.	0.334	-0.860	0.044	-0.052		
8:30 AM Dec 13		Import price index	Nov	MoM % chg.	0.433	-1.56	0.022	-0.045		
8:30 AM Dec 14		Retail sales and food services	Nov	MoM % chg.	0.168	0.229	0.166	0.010		
9:10 AM Dec 14		Industrial production index	Nov	MoM % chg.	0.177	0.606	0.263	0.113		
9:10 AM Dec 14		Capacity utilization	Nov	Ppt. chg.	0.101	0.329	0.342	0.078		
			Data revisions						-0.092	
Dec 14	8:30 AM Dec 17	Empire State Mfg. Survey: General business conditions	Dec	Index	22.1	10.9	0.003	-0.033	2.42	
	8:30 AM Dec 18	Housing starts	Nov	MoM % chg.	1.47	3.20	0.012	0.021		
	8:30 AM Dec 18	Building permits	Nov	Level chg. (thousands)	-0.014	63.0	0.001	0.091		
	8:30 AM Dec 20	Phila. Fed Mfg. business outlook: Current activity	Dec	Index	17.4	9.40	0.001	-0.009		
	8:30 AM Dec 21	Manufacturers' new orders: Durable goods	Nov	MoM % chg.	3.08	0.758	0.014	-0.033		
	8:30 AM Dec 21	Manufacturers' shipments: Durable goods	Nov	MoM % chg.	0.935	0.707	0.088	-0.020		
	8:30 AM Dec 21	Mfrs.' unfilled orders: All manufacturing industries	Nov	MoM % chg.	0.274	-0.144	-0.007	0.003		
	8:30 AM Dec 21	Manufacturers' inventories: Durable goods	Nov	MoM % chg.	0.256	0.256	-0.134	0.000		
	10:00 AM Dec 21	Real disposable personal income	Nov	MoM % chg.	0.188	0.184	0.017	-0.000		
	10:00 AM Dec 21	PCE less food and energy: Chain price index	Nov	MoM % chg.	0.148	0.148	0.163	0.000		
	10:00 AM Dec 21	PCE: Chain price index	Nov	MoM % chg.	0.181	0.056	0.082	-0.010		
	10:00 AM Dec 21	Real personal consumption expenditures	Nov	MoM % chg.	0.158	0.326	0.215	0.036		
			Data revisions							0.008
Dec 21	8:05 AM Jan 03	ADP nonfarm private payroll employment	Dec	Level chg. (thousands)	134.7	271.0	0.233*	0.032	2.48	
	10:00 AM Jan 03	ISM mfg.: PMI composite index	Dec	Index	56.2	54.1	0.015	-0.031		
	10:00 AM Jan 03	ISM mfg.: Prices index	Dec	Index	58.2	54.9	0.002	-0.006		
	10:00 AM Jan 03	ISM mfg.: Employment index	Dec	Index	55.3	56.2	0.012	0.011		
	8:30 AM Jan 04	All employees: Total nonfarm	Dec	Level chg. (thousands)	184.8	312.0	0.155*	0.020		
	8:30 AM Jan 04	Civilian unemployment rate	Dec	Ppt. chg.	-0.021	0.200	-0.138	-0.031		
			Data revisions							0.002
			Parameter revisions							0.013
Jan 04								2.49		

Source: Authors' calculations, based on data accessed through Haver Analytics.

Notes: MoM % chg. indicates month over month percentage change. QoQ % chg. indicates quarter over quarter percentage change. The weights with the asterisk are multiplied by 1,000 for legibility.

2 | 2019:Q1 GDP Growth

Percent (annual rate)



Key

◆ New York Fed Staff Nowcast

Data Releases

- Housing and construction
- Manufacturing
- Surveys
- Retail and consumption
- Income
- Labor
- International trade
- Others

Source: Authors' calculations, based on data accessed through Haver Analytics.

Note: Colored bars reflect the impact of each data release on the nowcast.

2.1 | Nowcast Detail

■ Housing and construction ■ Manufacturing ■ Surveys ■ Retail and consumption ■ Income ■ Labor ■ International trade ■ Others										
Update	Release Date	Data Series	Reference Period	Units	Forecast	Actual	Weight	Impact	Nowcast GDP Growth	
					[a]	[b]	[c]	[c(b - a)]		
Nov 30									2.29	
	10:00 AM Dec 03	ISM mfg.: PMI composite index	Nov	Index	57.0	59.3	0.124	0.278		
	10:00 AM Dec 03	ISM mfg.: Prices index	Nov	Index	69.6	60.7	0.021	-0.191		
	10:00 AM Dec 03	Value of construction put in place	Oct	MoM % chg.	0.203	-0.149	0.022	-0.008		
	10:00 AM Dec 03	ISM mfg.: Employment index	Nov	Index	55.7	58.4	0.056	0.153		
	8:05 AM Dec 06	ADP nonfarm private payroll employment	Nov	Level chg. (thousands)	205.7	179.0	1.441*	-0.038		
	8:30 AM Dec 06	Exports: Goods and services	Oct	MoM % chg.	0.743	-0.148	0.050	-0.045		
	8:30 AM Dec 06	Imports: Goods and services	Oct	MoM % chg.	0.618	0.234	0.038	-0.015		
	10:00 AM Dec 06	ISM nonmanufacturing: NMI composite index	Nov	Index	59.8	60.7	0.022	0.021		
	10:00 AM Dec 06	Inventories: Total business	Oct	MoM % chg.	0.467	0.558	0.098	0.009		
	8:30 AM Dec 07	All employees: Total nonfarm	Nov	Level chg. (thousands)	199.2	155.0	0.681*	-0.030		
	8:30 AM Dec 07	Civilian unemployment rate	Nov	Ppt. chg.	-0.071	0.000	-0.189	-0.013		
		Data revisions						0.021		
Dec 07									2.44	
	10:00 AM Dec 10	JOLTS: Job openings: Total	Oct	Level chg. (thousands)	203.4	119.0	-0.073*	0.006		
	8:30 AM Dec 11	PPI: Final demand	Nov	MoM % chg.	0.241	0.085	0.176	-0.027		
	8:40 AM Dec 12	CPI-U: All items	Nov	MoM % chg.	0.263	0.019	0.156	-0.038		
	8:40 AM Dec 12	CPI-U: All items less food and energy	Nov	MoM % chg.	0.173	0.209	0.178	0.006		
	8:30 AM Dec 13	Export price index	Nov	MoM % chg.	0.334	-0.860	0.080	-0.095		
	8:30 AM Dec 13	Import price index	Nov	MoM % chg.	0.433	-1.56	0.048	-0.095		
	8:30 AM Dec 14	Retail sales and food services	Nov	MoM % chg.	0.168	0.229	0.214	0.013		
	9:10 AM Dec 14	Industrial production index	Nov	MoM % chg.	0.177	0.606	0.338	0.145		
	9:10 AM Dec 14	Capacity utilization	Nov	Ppt. chg.	0.101	0.329	0.439	0.100		
		Data revisions						-0.053		
Dec 14									2.40	
	8:30 AM Dec 17	Empire State Mfg. Survey: General business conditions	Dec	Index	22.1	10.9	0.021	-0.237		
	8:30 AM Dec 18	Housing starts	Nov	MoM % chg.	1.47	3.20	0.014	0.024		
	8:30 AM Dec 18	Building permits	Nov	Level chg. (thousands)	-0.014	63.0	0.002	0.108		
	8:30 AM Dec 20	Phila. Fed Mfg. business outlook: Current activity	Dec	Index	17.4	9.40	0.015	-0.123		
	8:30 AM Dec 21	Manufacturers' new orders: Durable goods	Nov	MoM % chg.	3.08	0.758	0.017	-0.039		
	8:30 AM Dec 21	Manufacturers' shipments: Durable goods	Nov	MoM % chg.	0.935	0.707	0.107	-0.024		
	8:30 AM Dec 21	Mfrs.' unfilled orders: All manufacturing industries	Nov	MoM % chg.	0.274	-0.144	-0.006	0.003		
	8:30 AM Dec 21	Manufacturers' inventories: Durable goods	Nov	MoM % chg.	0.256	0.256	-0.163	0.000		
	10:00 AM Dec 21	Real disposable personal income	Nov	MoM % chg.	0.188	0.184	0.022	-0.000		
	10:00 AM Dec 21	PCE less food and energy: Chain price index	Nov	MoM % chg.	0.148	0.148	0.300	0.000		
	10:00 AM Dec 21	PCE: Chain price index	Nov	MoM % chg.	0.181	0.056	0.180	-0.022		
	10:00 AM Dec 21	Real personal consumption expenditures	Nov	MoM % chg.	0.158	0.326	0.282	0.048		
		Data revisions						0.001		
Dec 21									2.14	
	8:05 AM Jan 03	ADP nonfarm private payroll employment	Dec	Level chg. (thousands)	134.7	271.0	1.423*	0.194		
	10:00 AM Jan 03	ISM mfg.: PMI composite index	Dec	Index	56.2	54.1	0.099	-0.208		
	10:00 AM Jan 03	ISM mfg.: Prices index	Dec	Index	58.2	54.9	0.013	-0.043		
	10:00 AM Jan 03	ISM mfg.: Employment index	Dec	Index	55.3	56.2	0.046	0.042		
	8:30 AM Jan 04	All employees: Total nonfarm	Dec	Level chg. (thousands)	184.8	312.0	0.646*	0.082		
	8:30 AM Jan 04	Civilian unemployment rate	Dec	Ppt. chg.	-0.021	0.200	-0.337	-0.074		
		Data revisions						-0.005		
		Parameter revisions						0.016		
Jan 04									2.14	

Source: Authors' calculations, based on data accessed through Haver Analytics.

Notes: MoM % chg. indicates month over month percentage change. QoQ % chg. indicates quarter over quarter percentage change. The weights with the asterisk are multiplied by 1,000 for legibility.

Nowcasting Report Q&A

1. What is the ultimate goal of the exercise?

Our model produces a “nowcast” of GDP growth, incorporating a wide range of macroeconomic data as it becomes available. With this approach, we aim to read the real-time flow of information and evaluate its effects on current economic conditions. The platform provides a model-based counterpart to the more routine analysis at the bank, which has traditionally been based on expert knowledge.

2. What is the modeling strategy?

The platform employs Kalman-filtering techniques and a dynamic factor model. The approach has a number of desirable features. It is based on:

- a reliable big data framework that captures in a parsimonious way the salient features of macroeconomic data dynamics;
- a design that digests the data as “news,” mimicking the way markets work.

3. What are the input data? What has been driving the data selection?

We include all the market-moving indicators—the same data that are also constantly monitored by market participants and commentators.

4. Why should we trust the model?

Extensive back-testing of the model, research, and practical experience have shown that the platform is able to approximate best practices in macroeconomic forecasts. The model produces forecasts that are as accurate as, and strongly correlated with, predictions based on best judgment.

The methodology has been tested for accuracy in many countries, including large developed economies (the Euro area, Italy, France, Germany, Spain, the United Kingdom, Japan, and Canada), small open economies (Australia, Ireland, Belgium, New Zealand, the Czech

Republic, and Scotland), fast-growing economies (Brazil, Russia, India, China, and South Africa), and developing economies (Mexico, Indonesia, and Argentina).

5. How should we read the output of the model?

- The model produces forecasts for all variables taking into account their dynamic interactions.
- Since it is a fully specified dynamic model, the platform provides an intuitive reading of the incoming data as “news.”
- The difference between two consecutive forecasts (that is, the forecast revision) is the weighted average of the news during the week.
- News is defined as the difference between released data and model predictions. The weights account for the information content as well as the timeliness of the data releases.
- The contribution of new data to the forecast revision is reported in the two charts with colored bars. To make the charts easier to read, we grouped variables in a few broad categories. Detailed information about the composition of the groupings is provided in the accompanying tables.

References

- *Banbura, M., D. Giannone, M. Modugno, and L. Reichlin.* 2013. “Nowcasting and the Real-Time Data Flow.” In G. Elliott and A. Timmermann, eds., *Handbook of Economic Forecasting*, Vol. 2. Amsterdam: Elsevier-North Holland.
- *Bok, B., D. Caratelli, D. Giannone, A. Sbordone, and A. Tambalotti.* 2017. “Macroeconomic Nowcasting and Forecasting with Big Data.” *Federal Reserve Bank of New York Staff Reports*, no. 830, November.
- *Giannone, D., L. Reichlin, and D. Small.* 2008. “Nowcasting: The Real-Time Informational Content of Macroeconomic Data.” *Journal of Monetary Economics* 55, no.4 (May): 665-76.

Nowcasting Report FAQs

1. What is the schedule for reporting and updating the nowcast for each quarter?

We start reporting the nowcast of GDP growth for a reference quarter one week after the publication of the second official GDP estimate for two quarters prior. For example, we began reporting the nowcast for 2017:Q2 on Friday, March 10, 2017, following the government's second estimate of 2016:Q4 GDP on Tuesday, February 28, 2017. We continue to update the nowcast for a reference quarter until the release of the advance GDP estimate, roughly one month after the end of the quarter. For 2017:Q2, this occurred on July 28, 2017, at which point we stopped updating the nowcast for this quarter. We retain the reference quarter's progression plot and detail table in the Nowcasting Report until the publication of the second GDP estimate, roughly two months after the end of the quarter. Following the second estimate of 2017:Q2 GDP on August 30, 2017, we removed 2017:Q2 from the Nowcasting Report and began reporting the nowcast for 2017:Q4.

2. What are the major conceptual differences between the New York Fed Staff Nowcast and the Atlanta Fed's Nowcast?

The New York Fed Staff Nowcast and the Atlanta Fed's GDPNow are both based on statistical filtering techniques applied to a dynamic factor model. These techniques are very common in big data analytics since they effectively summarize the information contained in large data sets through a small number of common factors. The general framework for macroeconomic nowcasting has been developed in the academic literature over the past ten years, as discussed in the Q&A included in this report. The New York Fed Staff Nowcast is a straightforward application of the most advanced techniques developed in this academic literature. GDPNow adapts these techniques to mimic the methods used by the

BEA to estimate real GDP growth, as well explained by GDPNow's own FAQs.

Because GDPNow and the New York Fed Staff Nowcast are different models, they can generate different forecasts of real GDP growth. Our policy is not to comment on or interpret any differences between the forecasts of these two models.

3. Is the “annual rate” the y/y growth rate?

No. We track the annualized quarterly (“q/q”) growth rate of real GDP, not the four-quarter (“y/y”) growth rate.

4. Can we obtain the data underlying this analysis?

To make it easier for nowcast followers to better understand and replicate our results, we share the MATLAB code for our model and a snapshot of data sets from the past year on Github at <https://github.com/FRBNY-TimeSeriesAnalysis/Nowcasting>. The newest releases for all data series are publicly available from source websites; real-time historical data for most series can be retrieved from the St. Louis Fed's ALFRED database. Unfortunately, we cannot provide the complete data set used in our model because the historical data for a handful of series (including the ISM manufacturing and nonmanufacturing indexes) are proprietary. As a consequence, the replication files do not exactly reproduce the published version of the New York Fed Staff Nowcast.

Authors

New York Fed Time-Series Analysis Team